



**TECHNIMOUNT**  
EMS®



# BRACKET PRO SERIE® 60 - GR

MOUNTING SYSTEM FOR THE GROUND TRANSPORT  
OF THE HAMILTON - T1® VENTILATOR

## SAFETY AND FLEXIBILITY WHERE IT MATTERS MOST

The Bracket Pro Serie 60 - GR is a cutting-edge mounting solution designed for the Hamilton - T1 ventilator during EMS and critical care transport.

This bracket offers options tailored to your needs, ensuring quick and easy installation in various mounting configurations in ground environments, facilitating a seamless continuum of care.

Tested in compliance with the highest industry safety standards, this solution stands as a beacon of reliability and convenience to healthcare personnel.

At Technimount EMS, we understand that EMS and Critical Care Transport teams need solutions that they can rely on. We design and develop quality mounting systems which are safe and flexible, allowing you to concentrate on what matters most - patient care.

# BRACKET PRO SERIE® 60 - GR

## POTENTIAL CONFIGURATIONS

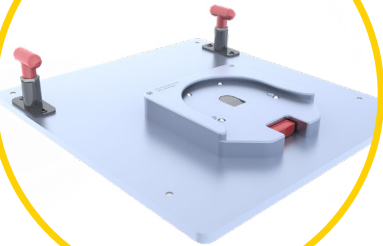
Standard Surface Base



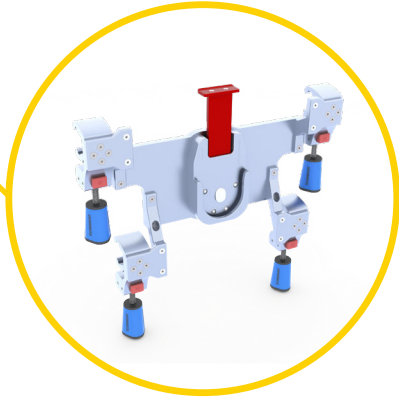
Safety Arm System



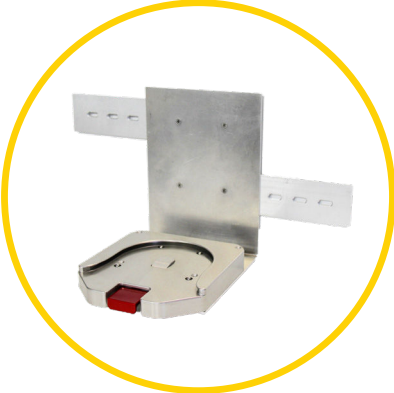
Safety MD Transporter\*



Floor Mount System



Wall Mount System\*



Wall Mount Pro

Note: Product may vary from images shown

\*Only with an anti-rotation micro disc

# TECHNICAL SPECIFICATIONS

<b>Product Name</b>	Bracket Pro Serie® 60 - GR
<b>Description</b>	Mounting system designed to secure the Hamilton-T1® ventilator during ground EMS and critical care transport
<b>Part Number</b>	<ul style="list-style-type: none"><li>- 700-23-HM (bottom disc)</li><li>- 700-24-HM2D (bottom and back discs)</li></ul>
<b>Features</b>	<ul style="list-style-type: none"><li>- Rotary locks for easy installation and removal of the ventilator</li><li>- Suited for installations on surfaces, stretchers and carts</li><li>- Feet</li></ul>
<b>Operating Environment</b>	EMS/CCT (Ground)
<b>Compliance</b>	Tested in compliance with SAE J3043 and AMD-028
<b>Compatible Mounting System</b>	<ul style="list-style-type: none"><li>- Standard Surface Base</li><li>- Micro Base</li><li>- Wall Mount Systems</li><li>- Safety Arm System</li><li>- Safety MD-Transporter®</li><li>- Floor Mount System</li></ul>
<b>Dimensions (W x D x H)</b>	<ul style="list-style-type: none"><li>- 700-23-HM: 11.5 in. X 10 in. X 11.8 in. (29.2 cm X 25.4 cm X 30 cm)</li><li>- 700-24-HM2D: 11.5 in. X 10.6 in. X 11.8 in. (29.2 cm X 26.9 cm X 30 cm)</li></ul>
<b>Weight</b>	<ul style="list-style-type: none"><li>- 700-23-HM: 5.6 lb (2.5 kg)</li><li>- 700-24-HM2D: 5.9 lb (2.7 kg)</li></ul>
<b>Composition</b>	<ul style="list-style-type: none"><li>- Bracket: aluminum 6061-T6 with silver anodized finish</li><li>- Standard bottom disc: aluminum 6061-T6 with 304 stainless steel inserts and peek fibre cushions</li><li>- Anti-rotation micro disc: aluminum 6061-T6 with silver anodized finish</li><li>- Feet: acetal</li></ul>
<b>Safe Working Load (SWL)</b>	16.5 lb (7.48 kg)
<b>Operating Temperature</b>	- 31° F to 113° F (- 35° C to 45° C)
<b>Installation</b>	<ul style="list-style-type: none"><li>- The ventilator is installed in the bracket and secured by two (2) rotary locks</li><li>- The bracket is installed in the Standard Surface Base and/or Micro Base and secured by a safety mechanism with quick release button</li></ul>
<b>Model &amp; Configuration Options</b>	Contact Customer Service at <a href="mailto:customerservice@technimount.com">customerservice@technimount.com</a>

\* Medical device manufacturer and product names are Trademarks™ or Registered Trademarks® of their respective holders. Technimount does not have a commercial relationship with these manufacturers.

# YOUR SAFETY IS OUR PRIORITY

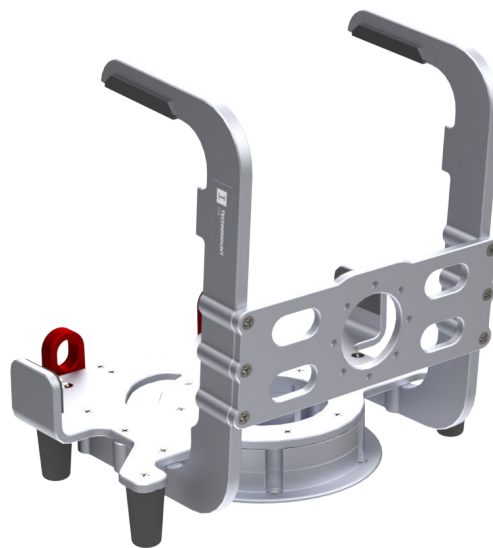


## FEATURES

- ✓ Standard bottom disc and optional anti-rotation micro disc for various mounting configurations on surfaces, stretchers, and wall mounts.
- ✓ Rotary lock mechanism, ensuring a secure and stable attachment of the ventilator for safe transport.
- ✓ Bracket's design respects the integrity and functionality of the Hamilton - T1.
- ✓ Efficient installation and removal for quick deployment in emergencies.
- ✓ Durable feet to stabilize the bracket on any flat surface.
- ✓ Tested in compliance with the highest industry safety standards for ground transport of medical devices.

## BENEFITS

- + Enables flexibility to utilize the mounting solution across various settings, accommodating different patient needs during transport.
- + Facilitates the installation and enhances stability and safety by preventing unintended movement or detachment of the device.
- + Allows full access to the ventilator's connectors and tubings at all times, helping maintain crucial patient connections.
- + Ensures that the ventilator can be securely mounted whilst supporting the need for portability, giving peace of mind to the personnel.
- + Provides added stability to prevent damage to the medical device and facilitates cleaning to maintain a sterile environment.
- + Gives healthcare professionals confidence in the performance of the mounting solution during patient transport.



**SAFETY AND FLEXIBILITY  
WHERE IT MATTERS MOST**

[technimount.com](https://technimount.com)