



**TECHNIMOUNT**  
EMS™



## **BRACKET PRO SERIE® 105**

MOUNTING SYSTEM FOR THE ENVE®/REVEL® VENTILATOR

### **SAFETY AND FLEXIBILITY WHERE IT MATTERS MOST**

The Bracket Pro Serie® 105 is designed to give fast and easy access to the EnVe/ReVel Ventilator. It is a lightweight and robust design allowing to secure the medical device during EMS and Critical Care Transport.

The Bracket Pro Serie® 105 is designed to comply with the highest industry safety standards for transport of medical equipment, SAE J3043.

At Technimount EMS, we understand that EMS and Critical Care Transport teams need solutions that they can rely on. We design and develop quality mounting systems which are safe and flexible, allowing you to concentrate on what matters most - patient care.



Hospital



Ambulance



Stretcher



Military



Air

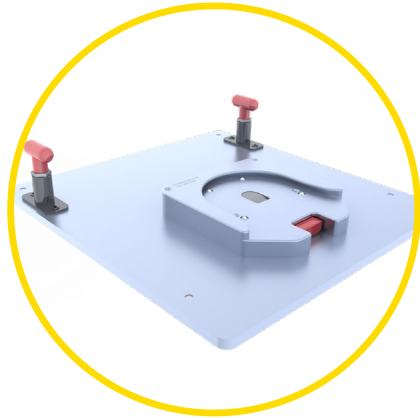
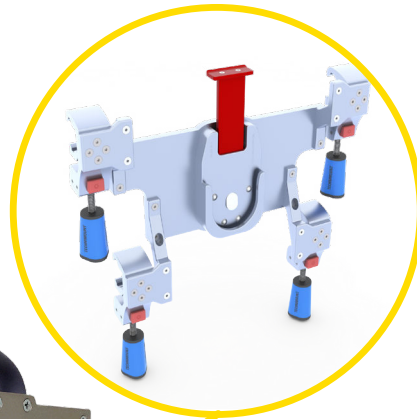
# BRACKET PRO SERIE® 105

## POTENTIAL CONFIGURATIONS

Safety MD Transporter



Wall Mount Systems (EU)



Floor Mount  
Air Ambulance



Safety Arm System



Standard Surface Base



Wall Mount Systems (NA)

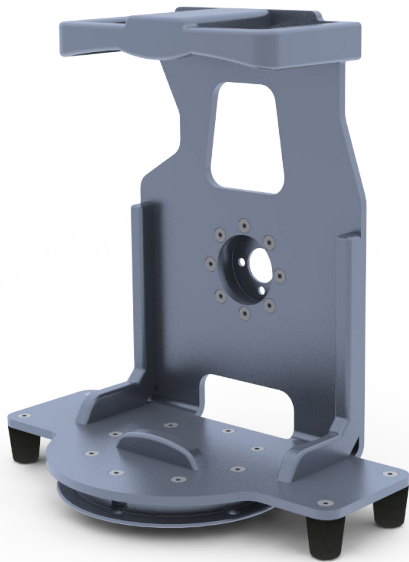


# TECHNICAL SPECIFICATIONS

<b>Product Name</b>	Bracket Pro Serie® 105
<b>Product Description</b>	Bracket mounting system to secure the EnVe /ReVel Ventilator on surfaces, cots/stretchers, walls and floors in emergency vehicles
<b>Compatibility of Medical Device*</b>	EnVe /ReVel Ventilator from Vyaire Medical Inc.
<b>Environment of Usage</b>	EMS/CCT (Ground & Flight) – Hospital/Clinic, Military
<b>Product Section Material</b>	<ul style="list-style-type: none"><li>• Main Assembly: Aluminum 6061-T6</li><li>• Standard Bottom Disc: Aluminum 6061-T6 with 304 Stainless Steel Insert</li><li>• Anti-Rotation Micro Disc: Aluminum 6061-T6</li></ul>
<b>Product Finish</b>	<ul style="list-style-type: none"><li>• Main Assembly: Silver-Anodized Finish</li><li>• Standard Bottom Disc: Silver-Anodized Finish</li><li>• Anti-Rotation Micro Disc: Silver-Anodized Finish</li></ul>
<b>Environmental Regulation</b>	Complying with RoHs 3
<b>Temperature of Usage</b>	- 35° C to 45° C
<b>Certification</b>	Designed to Comply with: <ul style="list-style-type: none"><li>• SAE J3043 (26 G)</li><li>• FAA-FAR-DOT 27.561 &amp; DOT 27.562 (Flight)</li></ul>
<b>Installation</b>	Device retained on main assembly with no screws attached to the medical Device
<b>Attachment Options</b>	2 Locking Discs – Standard Bottom Disc – Anti-Rotation Micro Disc
<b>Transportation Compatibility System</b>	Compatible with Technimount's: <ul style="list-style-type: none"><li>• Standard Surface Base</li><li>• Safety Arm System For Stryker Cots (PowerPro – XT and Mx-Pro)</li><li>• Floor Mount Platform (Flight)</li><li>• Wall Mount Systems (Micro Base and Standard Base)</li><li>• Safety MD Transporter</li></ul>
<b>Features</b>	<ul style="list-style-type: none"><li>• Robust Mounting Solution for EMS/CCT/ALS Transport</li><li>• Flight and Ground Compatibility</li><li>• Multiple Configuration Options for Transport</li></ul>
<b>Physical Overall Dimensions</b>	Width 12 in, Depth 7.23 in, Hight 13.07 in
<b>Weight</b>	5.752 lb
<b>Part Number</b>	<ul style="list-style-type: none"><li>• 1400-10-BDV - Bracket Pro Serie® 105</li><li>• 100-20-UN - Standard Surface Base</li></ul>
<b>Other Models and Configurations Options</b>	Contact Technimount EMS for more information or for other options at <a href="mailto:customerservice@technimount.com">customerservice@technimount.com</a>

\* Product and medical equipment manufacturers names are trademarks™ or registered trademarks® of their respective holders. Technimount does not have a commercial relationship with these medical equipment manufacturers.

# YOUR SAFETY IS OUR PRIORITY

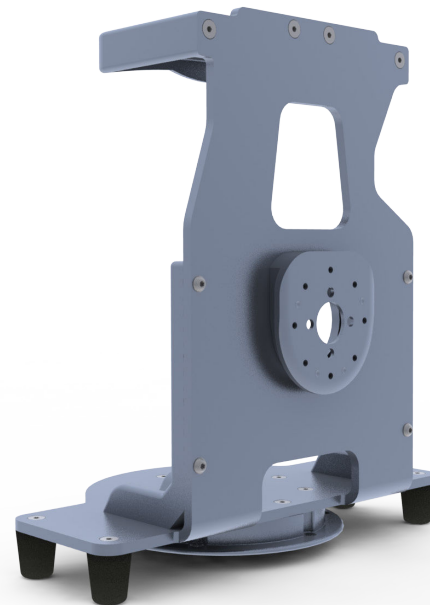


## FEATURES

- ✓ Designed for the EnVe/ReVel ventilator by Vyaire
- ✓ Bottom disc allows for 360° rotation when installed on the Standard Surface Base
- ✓ Anti-Rotation back disc for vertical support on different wall and arm systems
- ✓ Lightweight and robust design
- ✓ High-Density Aluminum with silver-anodized finish
- ✓ Designed in compliance with SAE J3043
- ✓ Compatible with all of Technimount's Products

## BENEFITS

- + Multiple configurations on cot/stretchers, wall, Floor/Surface for EMS or Critical Care Transport
- + Access to medical device from all angles (360° rotation on Technimount's Standard Surface Base)
- + Quick installation and removal of bracket from Technimount's mounting systems
- + Easy access to all connectors and functionalities of medical device
- + Certified mounting systems that comply with the highest industry standards and regulations
- + Reduces risks of damage to the equipment and ensures the safety of patients and crew during EMS and Critical Care Transport



## SAFETY AND FLEXIBILITY WHERE IT MATTERS MOST

[technimount.com](https://www.technimount.com)



Bracket Pro Serie, Technimount EMS are Registered Trademarks of Technologies CGC Inc.  
EnVe /ReVel Ventilator is a Trademark of Vyaire Medical Inc.

© 2021 Technimount E.M.S. Holding Inc. - All Rights Reserved - Printed in Canada

BP105-202107-01