



**TECHNIMOUNT**  
EMS®



# BRACKET PRO SERIE® 76 PX SMT

MOUNTING SYSTEM THAT SECURES  
THE PHILIPS TEMPUS® PRO MONITOR WITH SMART MOUNT

## SAFETY AND FLEXIBILITY WHERE IT MATTERS MOST

The Bracket Pro Serie 76 PX SMT is designed to secure the Philips Tempus Pro monitor with its Smart Mount and optional accessory bags. Intended for ground EMS transport, the bracket keeps the medical device lightweight and portable.

The Bracket Pro Serie 76 PX SMT is tested in compliance with SAE J3043, the highest industry safety standards for Emergency Medical transport.

At Technimount EMS, we understand that EMS and Critical Care Transport teams need solutions that they can rely on. We design and develop quality mounting systems which are safe and flexible, allowing you to concentrate on what matters most - patient care.

# BRACKET PRO SERIE® 76 PX SMT

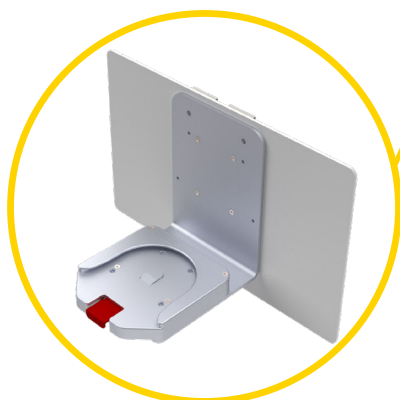
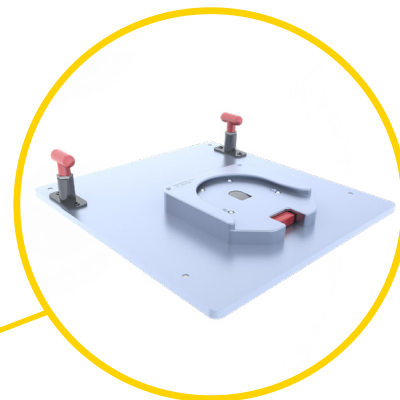
## POTENTIAL CONFIGURATIONS

### Standard Surface Base

#### Safety Arm System™



#### Floor Mount System



#### Wall Mount Pro



#### Accessory Bags

Note: Product may vary from images shown

# TECHNICAL SPECIFICATIONS

<b>Product Name</b>	Bracket Pro Serie® 76 PX SMT
<b>Description</b>	Mounting system designed to secure the Phillips Tempus Pro® monitor with SMART mount during EMS and critical care transport
<b>Part Number</b>	320-11-PRO-PX-SMT
<b>Features</b>	<ul style="list-style-type: none"><li>- Compatible with or without accessory bags</li><li>- Access to all connectors and accessories</li><li>- Compact design</li><li>- Standard bottom disc</li><li>- Integrated front handle</li></ul>
<b>Operating Environment</b>	EMS/CCT (ground)
<b>Compliance</b>	Tested in compliance with SAE J3043 and AMD-028
<b>Compatibility</b>	<ul style="list-style-type: none"><li>- Phillips Tempus Pro® monitor</li><li>- SMART mount docking and charging station</li><li>- Accessory bags</li></ul>
<b>Compatible Mounting System</b>	<ul style="list-style-type: none"><li>- Standard Surface Base</li><li>- Safety Arm System™</li><li>- Wall Mount Pro</li><li>- Floor Mount System</li></ul>
<b>Dimensions (W X D X H)</b>	6.5 in. X 7.26 in. X 4.75 in. (16.51 cm X 18.44 cm X 12.07 cm)
<b>Weight</b>	3.06 lbs (1.39 kg)
<b>Composition</b>	<ul style="list-style-type: none"><li>- Bracket: steel and black powdered coated paint</li><li>- Standard bottom disc: aluminum 6061-T6 with silver anodized finish, 304 stainless steel insert and peek cushions</li></ul>
<b>Safe Working Load (SWL)</b>	20.3 lbs (9.2 kg)
<b>Operating Temperature</b>	- 31° F to 113° F (- 35° C to 45° C)
<b>Installation</b>	<ul style="list-style-type: none"><li>- SMART mount retained in mounting system by screws</li><li>- Monitor retained in SMART mount</li></ul>
<b>Model &amp; Configuration Options</b>	<ul style="list-style-type: none"><li>- 320-11-PRO-PX: Bracket Pro Serie® 76 PX</li><li>- Contact Customer Service at <a href="mailto:customerservice@technimount.com">customerservice@technimount.com</a></li></ul>

\* Medical device manufacturer and product names are Trademarks™ or Registered Trademarks® of their respective holders. Technimount does not have a commercial relationship with these manufacturers.

# YOUR SAFETY IS OUR PRIORITY



## FEATURES

- ✓ Standard bottom disc allows installation in multiple mounting configurations.
- ✓ Integrated front handle allows for enhanced maneuverability.
- ✓ The bracket easily installs to the Smart Mount, allowing for immediate medical device insertion and removal.
- ✓ Lightweight and compact design made of resistant material to biological fluids and quaternary-type disinfectants.
- ✓ Tested in compliance with SAE J3043, the highest industry safety standards for the transport of medical devices.

## BENEFITS

- + Advanced bracket that extends the device's portability to a variety of applications, 360 rotation for increased flexibility.
- + Compact, practical and lightweight solution used in multiple applications including stretchers, floors, surfaces and wall systems.
- + Front handle enables simple bracket installation and removal from the Standard Surface Base.
- + Sturdy material that can withstand tough EMS environments.
- + Ensures patient and personnel safety during critical care transport and reduces the risk of equipment damage.



## SAFETY AND FLEXIBILITY WHERE IT MATTERS MOST

[technimount.com](https://www.technimount.com)