



TECHNIMOUNT
EMS[®]

BRACKET PRO SERIE[®] 27-FL

MOUNTING SYSTEM FOR THE ZOLL ZENIX[®]
MONITOR & DEFIBRILLATOR



SAFETY AND FLEXIBILITY
WHERE IT MATTERS MOST

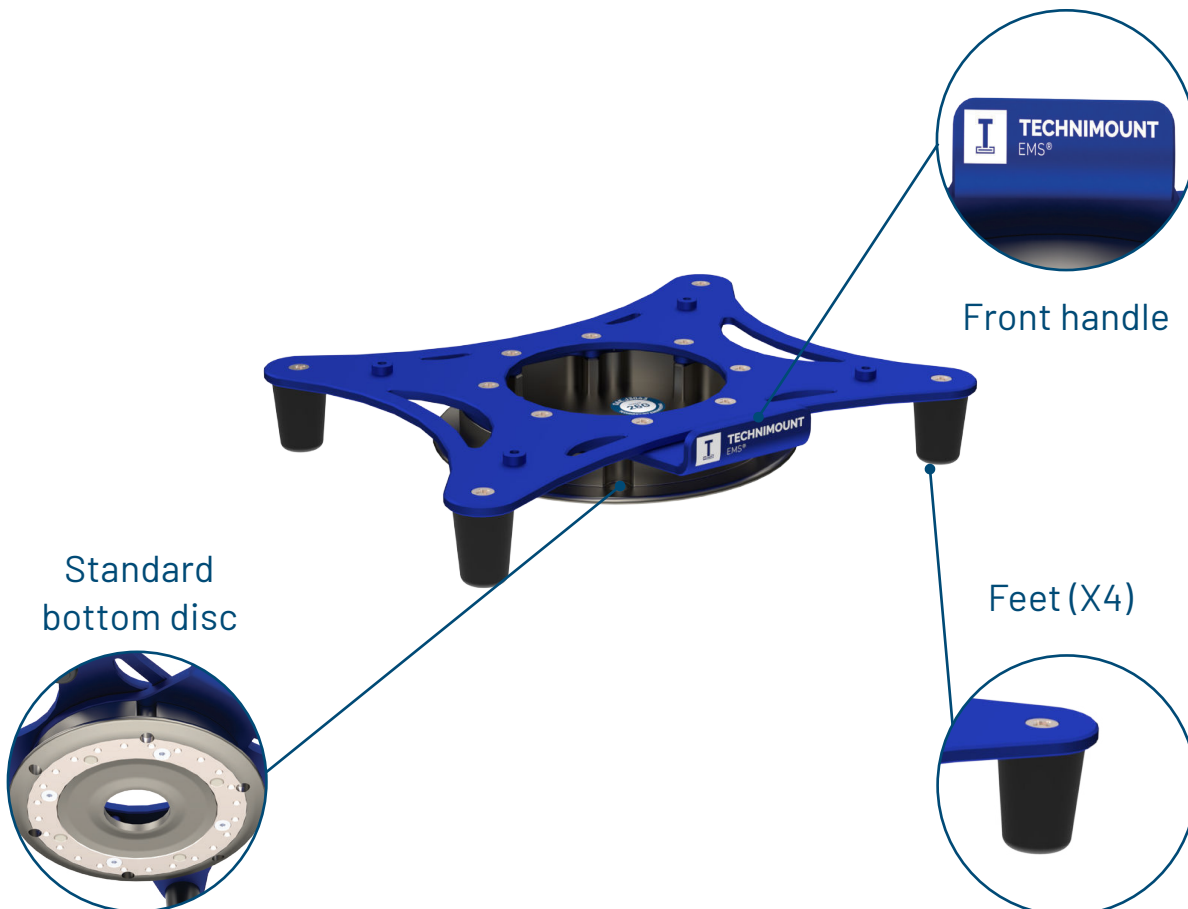
BRACKET PRO SERIE® 27-FL

Product Components

The Bracket Pro Serie® 27-FL is specifically designed to secure the ZOLL Zenix® monitor & defibrillator during air transport. Engineered to meet the industry's highest safety standards, it protects both patients and EMS professionals while reducing the risk of equipment damage during transport.

Ensuring maximum flexibility for EMS providers it allows use with or without the ZOLL® accessory bags. Fully compatible with all Technimount mounting systems equipped with a Standard Surface Base, it provides optimal positioning thanks to its standard bottom disc.

Equipped with a front handle the Bracket Pro Serie® 27-FL allows smooth installation and removal from its base, while facilitating controlled rotation of the device for optimal screen visibility and continuous patient monitoring during transport. Its compact footprint and lightweight design ensures EMS workflows remain efficient during protocols.



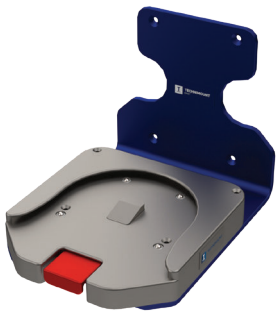
BRACKET PRO SERIE® 27-FL

Highlights

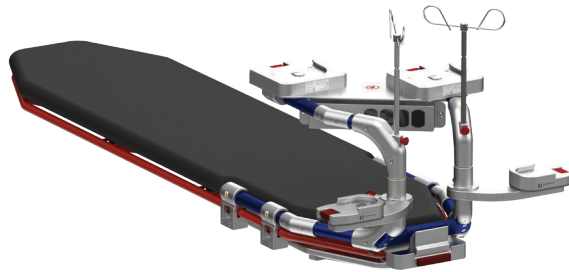
FEATURES & BENEFITS

- Tested in compliance with 14 CFR 23.561 & 23.561 & 27.561 & 29.561, the highest industry standard for the safe transport of medical devices.
- Compatible with or without the ZOLL Zenix® accessory bags, allowing EMS providers to continue following their standard protocols.
- Preserves the integrity of the medical device, ensuring full access to connectors, wiring, and interfaces at all times.
- Lightweight design contributes to ergonomics during patient care protocols
- Equipped with a Standard bottom disc for easy installation on stretchers, counters, or wall mounts.
- Front handle allows quick installation or removal of the bracket from its mounting location.
- Compact footprint optimizes space in the ambulance or care environment.
- Durable acetal feet provides stability on any flat surface.
- Made of highly resistant material that withstands the harsh EMS environments.

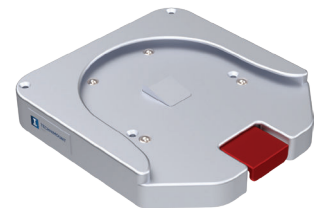
POSSIBLE CONFIGURATIONS



Wall Mount Pro - FL



Xtension Pro Assistant - LP



Standard Surface Base

BRACKET PRO SERIE® 27-FL

Technical Specifications

Product Name	Bracket Pro Serie 27 – FL
Description	Mounting bracket designed to secure and move a ZOLL Zenix monitor/defibrillator, with or without its accessory bags
Product Code	160-10-ZZ-FL
Operating Environment	EMS/CCT (air)
Compliance	<ul style="list-style-type: none">• Tested in compliance with 14 CFR 23.561• Tested in compliance with 14 CFR 25.561• Tested in compliance with 14 CFR 27.561• Tested in compliance with 14 CFR 29.561
Compatible Stretcher	N/A
Compatible Mounting System	<ul style="list-style-type: none">• Standard Surface Base• Extended Surface Base• Universal Mounting Base• Safety Arm System
Compatible Medical Devices/ Accessories	ZOLL Zenix monitor/defibrillator with or without accessories bags
Dimensions (L X P X H)	Bracket Pro Serie 27 – FL: 254.25 mm X 211.58 mm X 72.39 mm (10.01 in. X 8.33 in. X 2.85 in.) - With the medical device: 298.45 mm X 222.25 mm X 273.05 mm (11.75 in. X 8.75 in. X 10.75 in.) - With the medical device and (2) small accessories bags: 448.31 mm X 251.97 mm X 323.85 mm (17.65 in. X 9.92 in. X 12.75 in.) - With the medical device and (2) large accessories bags: 660.4 mm X 262.89 mm X 323.85 mm (26 in. X 10.35 in. X 12.75 in.)
Weight	0.98 kg (2.16 lb)
Composition	<ul style="list-style-type: none">• Aluminum and plastic
Total Safe Working Load (SWL)	9.98 kg (22 lb)
Operating Temperature	- 35° C to 45° C (- 31° F to 113° F)
Options	N/A



technimount.com

Bracket Pro Serie, Technimount EMS are Registered Trademarks of Technologies CGC Inc.

All medical device product and company names are trademarks™ or registered® trademarks of their respective holders.

© 2025 Technimount EMS Holding Inc. - All Rights Reserved - Printed in Canada

BR-BP27FL-202512EN-01