



**TECHNIMOUNT**  
MEDICAL®

**THS®**

## **THS® NEONATAL CART**

TRANSPORT CART FOR DRÄGER BABYLEO®, DRÄGER  
BABYROO® & MULTIPLE MEDICAL DEVICES

---

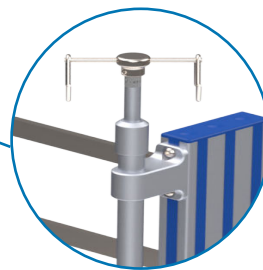
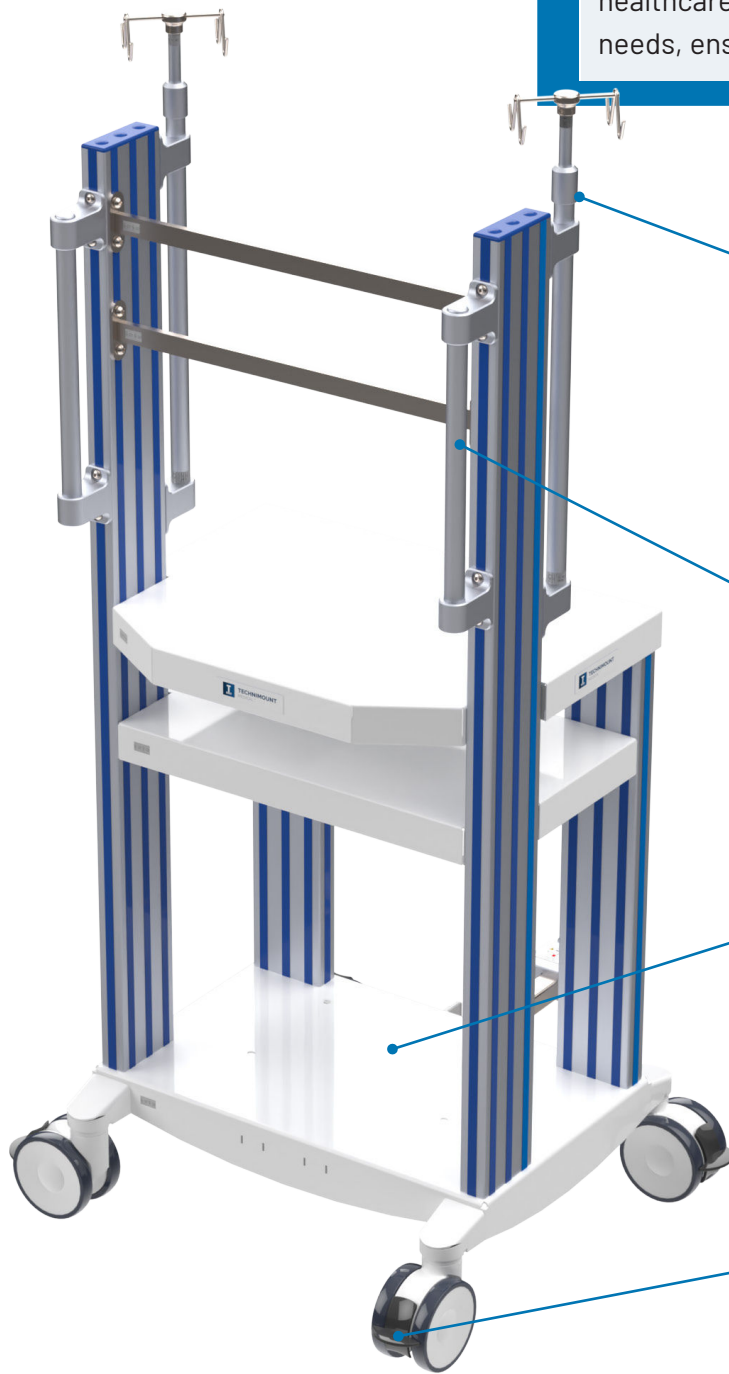


**MAKING HEALTHCARE PRACTICES  
MORE EFFICIENT**

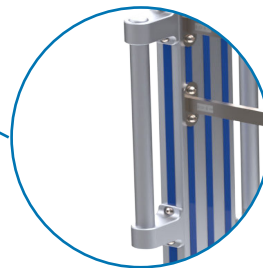
# THS<sup>®</sup> NEONATAL CART

## Product Components

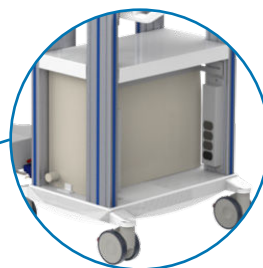
Designed for the diligent world of neonatal care, the THS<sup>®</sup> Neonatal Cart is a robust and versatile solution tailored for intra-hospital transport of the Dräger Babyleo incuWarmer and the Dräger BabyRoo open care warmer. Customizable with various accessories, it allows healthcare personnel to tailor the cart to their specific needs, ensuring safe and efficient transport of newborns.



Extendable IV poles providing adjustable height



Vertical handles for convenient maneuverability



Reinforced UPS shelf with UPS on-off switch protective panel



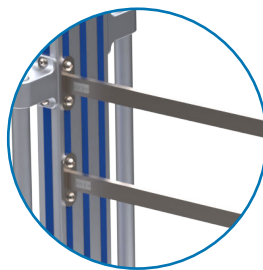
Four dual wheel swivel casters with braking system

# THS<sup>®</sup> NEONATAL CART

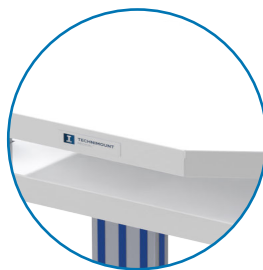
## Product Components

With increased capacity for managing multiple medical devices efficiently, it also offers interchangeability between devices. Its smooth-gliding dual casters make it easy to maneuver, while the integrated handles enable ergonomic handling during transport.

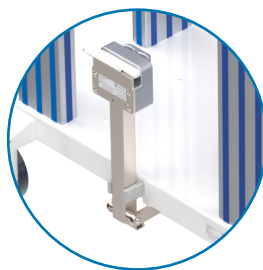
Vertical and horizontal rail system for various medical device configurations



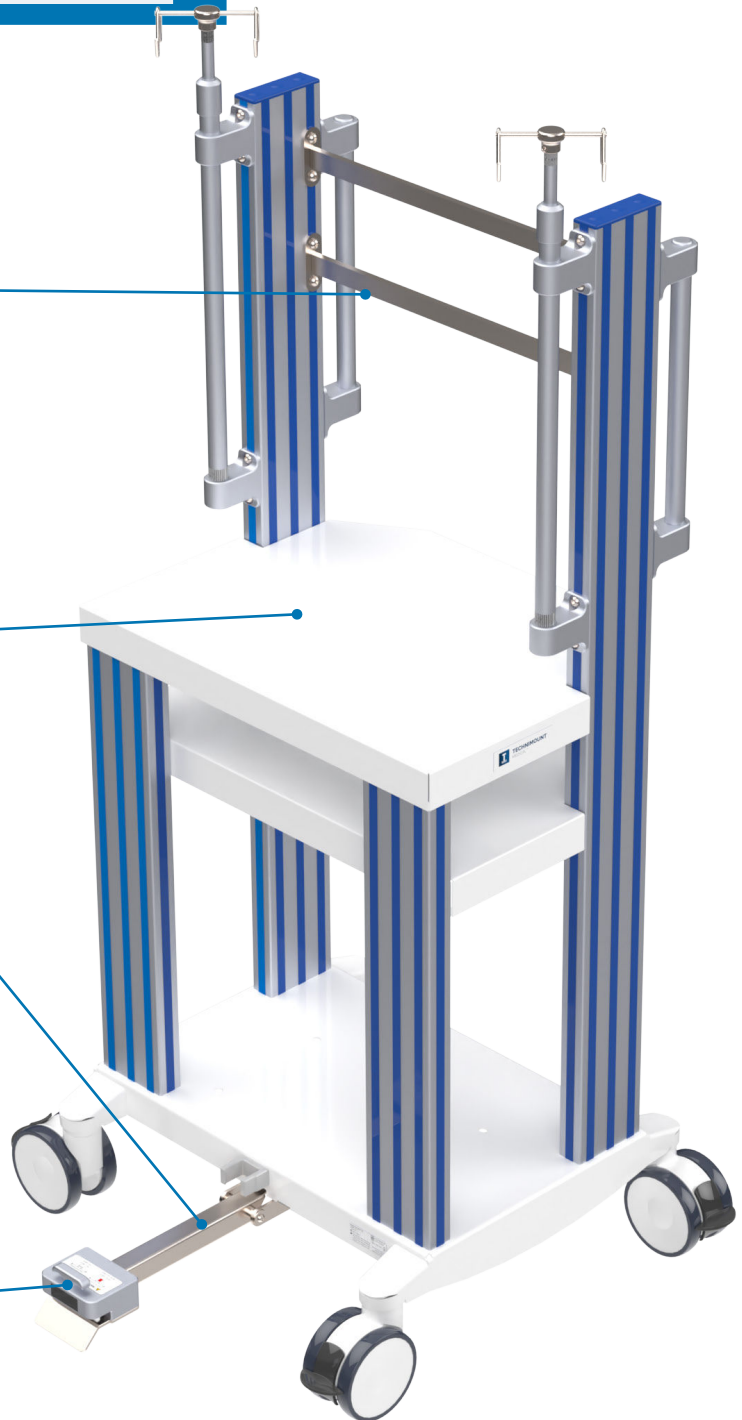
Top shelf offering further storage



Fold-up hitch providing greater leg clearance



Quick release mechanism on the fold-up hitch



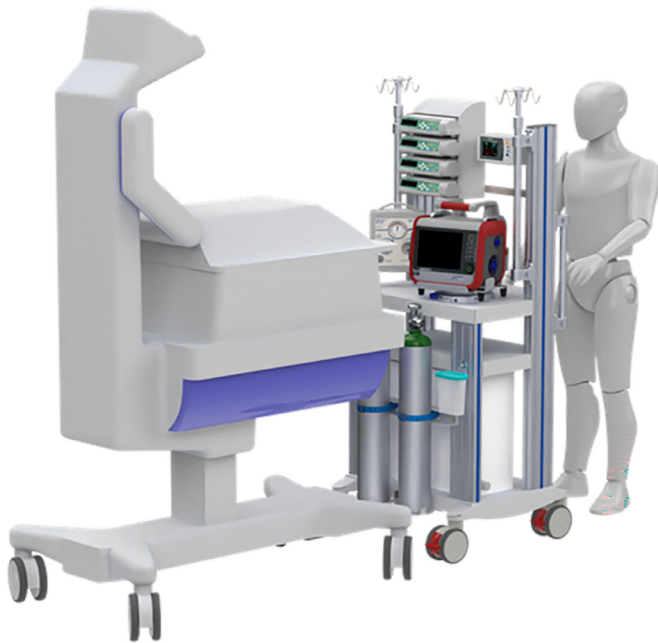
# THS<sup>®</sup> NEONATAL CART

## Main Highlights

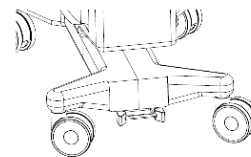
### FEATURES & BENEFITS

- Secures Dräger's IncuWarmers and open care warmers as well as various medical devices for safe intra-hospital transport.
- Responds to mobility needs allowing for effortless gliding and smooth maneuverability.
- Increases efficiency by maximizing medical device space through vertical and horizontal rail systems, ensuring easy access and visibility at all times.
- Improves user experience with ergonomic handles catering to all heights.
- Enables the support of heavy medical devices with a robust cart.
- Offers a UPS shelf, enabling uninterrupted power supply.
- Secures gas cylinders for easy transport and safety.
- Enhances versatility with THS<sup>®</sup> coupling device at either front or end of the IncuWarmer and open care warmer allowing for seamless configuration changes.
- Simplifies workflow with a fold-up hitch featuring an easy quick release mechanism.
- Promotes efficient maneuvering with four dual wheel casters equipped with a braking system.
- Facilitates ongoing clinical care and newborn safety.
- Tested in compliance with IEC 60601-1 Ed. 3 for reliability and safety assurance.

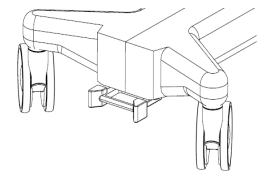
## THS<sup>®</sup> Coupling Device (Patient Foot End)



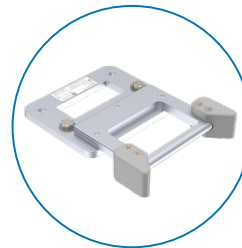
The THS<sup>®</sup> coupling device can be installed under device at patient head end or patient foot end.



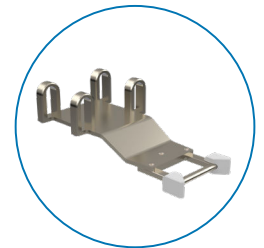
Patient Head End



Patient Foot End



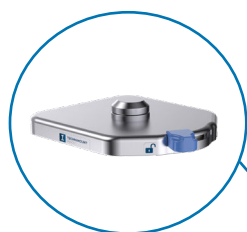
The Babyleo<sup>®</sup> TN500 coupling device



The Babyroo<sup>®</sup> TN300 coupling device

# THS<sup>®</sup> NEONATAL CART

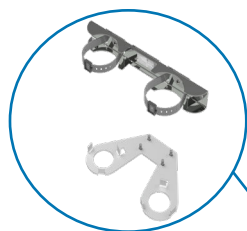
## Possible Configurations



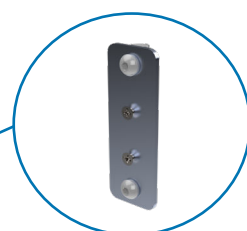
Universal Mounting Base



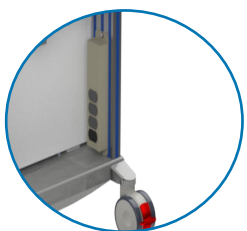
Support plate for Dräger mounting system with SLIDE adapter



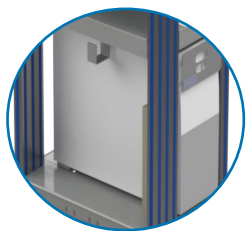
Type D-M15 & E-M24 mounting bracket



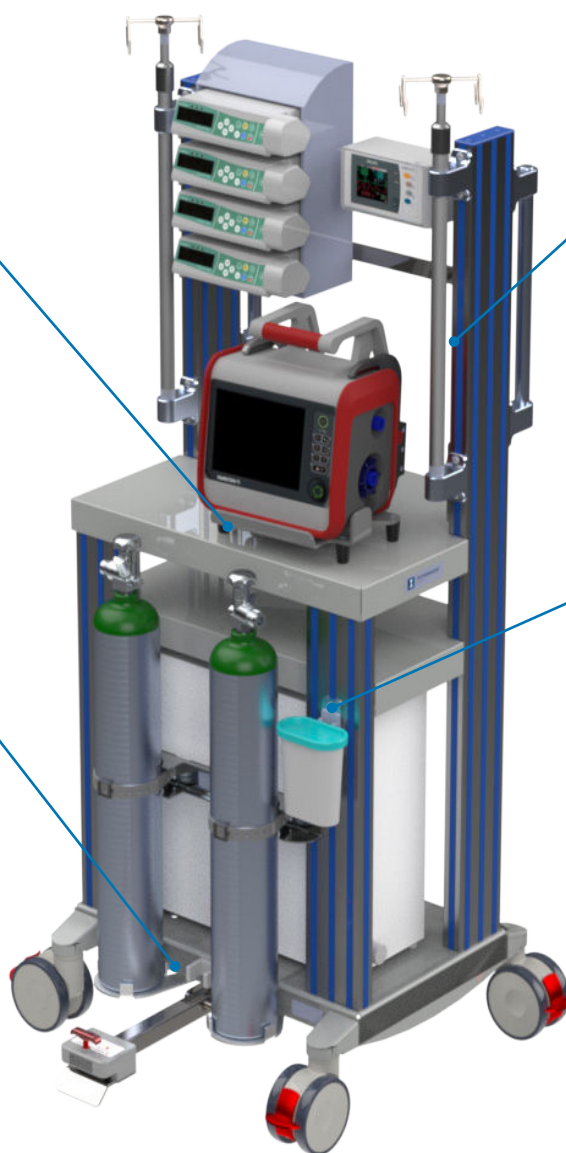
Support plate for the Serres suction canister



Medical grade power bar with surge protection



UPS cable management hook



# THS<sup>®</sup> NEONATAL CART

## Technical Specifications

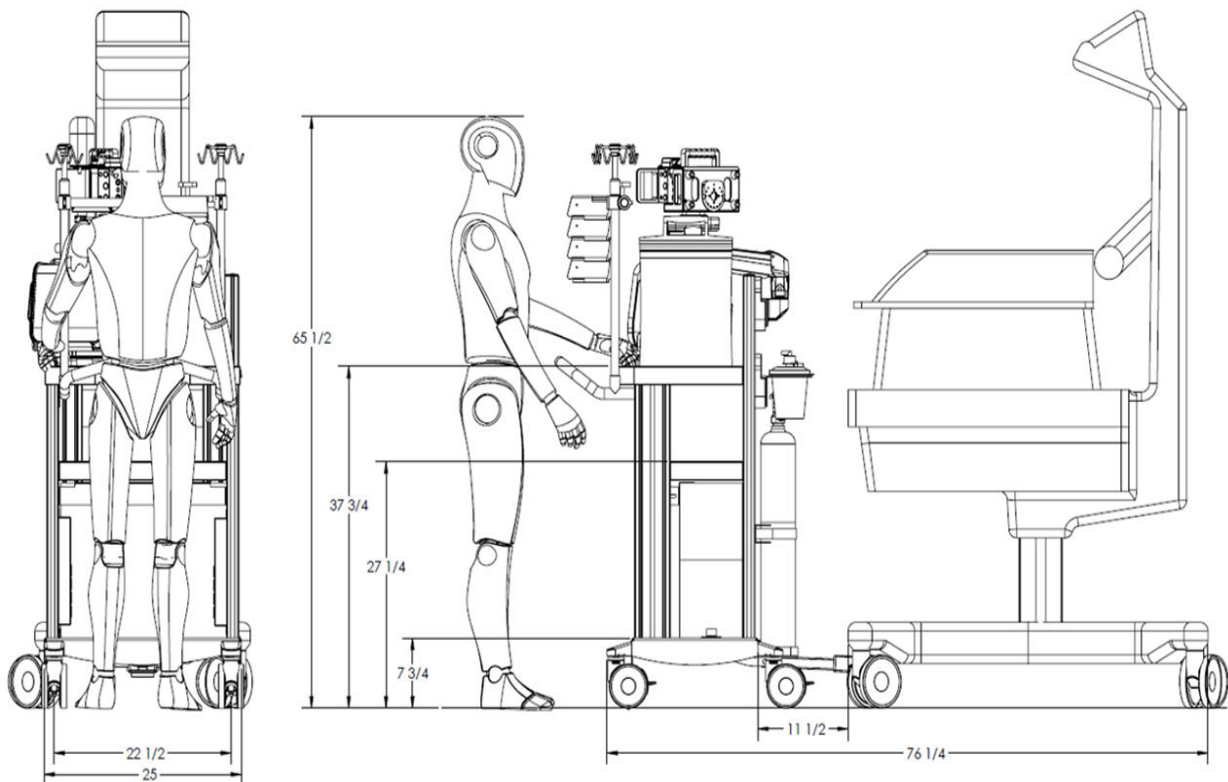
<b>Product Name</b>	THS <sup>®</sup> Neonatal Cart
<b>Description</b>	Transport cart designed to aid trained clinical staff move neonatal IncuWarmers or open care warmers and the multiple medical devices that are essential to neonates during intrahospital transfers
<b>Product Code</b>	MED-FB5EP2I4T
<b>Operating Environment</b>	Hospital
<b>Compliance</b>	Tested in compliance with IEC 60601-1 (applicable mechanical sections)
<b>Compatible Mounting System</b>	<ul style="list-style-type: none"><li>• Dräger Babyleo<sup>®</sup> TN500</li><li>• Dräger Babyroo<sup>®</sup> TN300</li><li>• Universal Mounting Base</li></ul>
<b>Dimensions (L X P X H)</b>	<ul style="list-style-type: none"><li>• Transport cart (w/o options or accessories): 25.75 in. X 23.25 in. X 64 in. (65.3 cm X 59 cm X 162.6 cm)</li><li>• Babyleo<sup>®</sup> TN500 coupling device: 9.2 in. X 6.8 in. X 2 in. (22.9 cm X 15.3 cm X 5.1 cm)</li><li>• Babyroo<sup>®</sup> TN300 coupling device: 17 in. X 9 in. X 6.4 in. (43.2 cm X 22.9 cm X 15.3 cm)</li></ul>
<b>Weight</b>	Transport cart (w/o options or accessories): 120 lb (54.5 kg) <ul style="list-style-type: none"><li>• Babyleo<sup>®</sup> TN500 coupling device: 2.4 lb (1.1 kg)</li><li>• Babyroo<sup>®</sup> TN300 coupling device: 5.9 lb (2.4 kg)</li></ul>
<b>Composition</b>	<ul style="list-style-type: none"><li>• Transport cart: aluminum 6061-T6, silver anodized finish and stainless steel, gray powder paint</li><li>• Babyleo<sup>®</sup> TN500 IncuWarmer THS<sup>™</sup> coupling device: aluminum 6061-T6, silver anodized finish, white acetal and stainless steel</li><li>• Babyroo<sup>®</sup> TN300 open care warmer THS<sup>™</sup> coupling device: aluminum 6061-T6, aluminum 5052-H32, silver anodized finish, white acetal and stainless steel</li><li>• Fold-up hitch: stainless steel, acetal and aluminum, silver anodized finish</li><li>• Rail system: stainless steel</li><li>• Handles: aluminum 6061-T6, silver anodized finish</li><li>• IV poles: aluminum 6061-T6, silver anodized finish and stainless steel</li><li>• 4-in. dual wheel swivel caster with braking system: polyamide and polyurethane</li></ul>

# THS<sup>®</sup> NEONATAL CART

## Technical Specifications

<b>Total Safe Working Load (SWL)</b>	<ul style="list-style-type: none"><li>• Transport cart: 300 lb (136.1 kg)</li><li>• Transport cart components:<ul style="list-style-type: none"><li>• Top shelf, UPS protector/shelf: 60 lb (27.22 kg), per shelf</li><li>• UPS shelf: 150 lb (68.04 kg)</li><li>• Horizontal rails: 40 lb (18.14 kg), per rail</li><li>• IV poles (top part): 4.5 L (160 oz liq.), per pole</li><li>• IV poles (bottom part): 20 lb (9.07 kg), per pole</li></ul></li></ul>
<b>Operating Temperature</b>	-31° F to 113° F (- 35° C to 45° C)
<b>Options</b>	<ul style="list-style-type: none"><li>• Type D-M15 and type E-M24 mounting bracket for 2 gas cylinders-</li><li>• Support plate for the Dräger mounting system with SLIDE adapter-</li><li>• Support plate for the Serres<sup>®</sup> suction canister</li><li>• Medical grade power bar with surge protection (4 or 6 outlets)</li><li>• UPS on-off switch protective panel for the Ametek<sup>®</sup> Powervar unit, model 50220-72R</li><li>• UPS cable management hook</li><li>• Contact Customer Service at <a href="mailto:customerservice@technimount.com">customerservice@technimount.com</a> for more options</li></ul>

## THS Neonatal Cart Measurements





**TECHNIMOUNT**  
MEDICAL®

At Technimount Medical Inc., we understand that healthcare professionals need equipment that makes their everyday practice easier. We design and develop quality solutions that are flexible and easy to use, allowing them to focus on what matters most - patient care.

Technimount Medical follows the same path as Technimount System, continuously innovating to make healthcare practices more efficient and safer. Since its inception in 2013, Technimount System has been recognized as the leader in the Emergency Medical Services' industry, setting the standard in safe and flexible mounting systems for medical devices.

With the same mindset, Technimount Medical, an ISO 13485 certified company, creates distinctive products that respond to the ever-evolving healthcare practices. Our Technimount Healthcare System® (THS®) and Healthcare Essentials product lines enable caregivers to move efficiently and safely all the medical devices needed to successfully treat their patients, wherever they are inside the hospital or remotely via telemedicine systems.

TECHNIMOUNT MEDICAL INC.  
Corporate Headquarters  
3770 Jean Marchand Street, Suite 100-B  
Quebec (QC) G2C 1Y6  
Canada  
T + 1 581.700.6583  
TF + 1 888.521.0871  
info@technimount.com  
technimount.com



Technimount Medical, Technimount Healthcare System and THS are Trademarks of Technimount System.  
All medical device product and company names are trademarks™ or registered® trademarks of their respective holders.

© 2025 Technimount Medical Inc. - All Rights Reserved - Printed in Canada

BR-THSNEO-202508EN-03