



**TECHNIMOUNT**  
EMS™



## **BRACKET PRO SERIE® 76**

MOUNTING SYSTEM FOR THE PHILIPS® TEMPUS® PRO

### **SAFETY & FLEXIBILITY WHERE IT MATTERS MOST**

The Bracket Pro Serie® 76 is the only universal mounting system to secure the Philips® Tempus® Pro in different applications including surface, floor, cot/stretcher and wall systems.

The Bracket Pro Serie® 76 is lightweight and robust solution tested for EMS and military environments.



**Ambulance**



**Stretcher**



**Military**



**Air**

At Technimount EMS, we understand that EMS and Critical Care Transport teams need solutions that they can rely on. We design and develop quality mounting systems which are safe and flexible, allowing you to concentrate on what matters most - patient care.

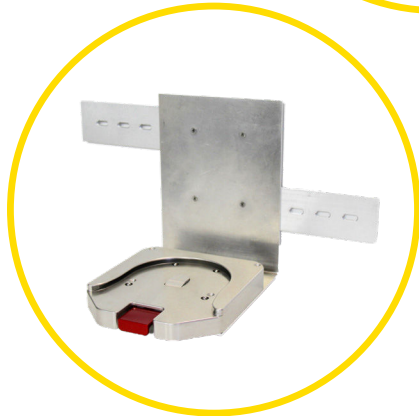
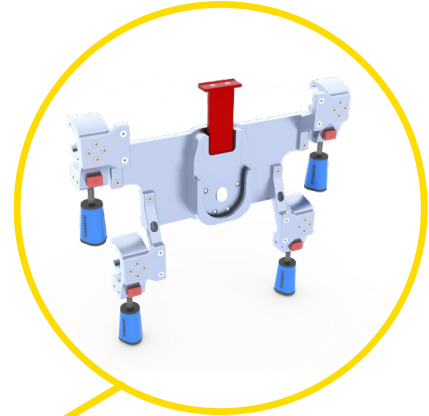
# BRACKET PRO SERIE® 76

## POTENTIAL CONFIGURATIONS

Safety MD Transporter



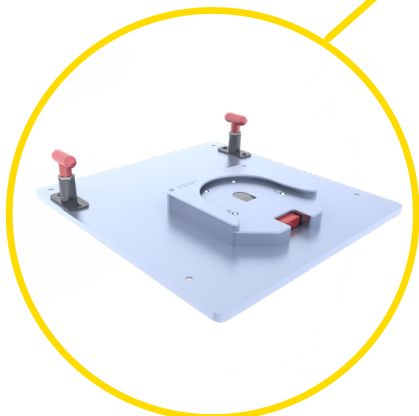
Wall Mount System (EU)



Wall Mount System



Safety Arm System



Floor Mount  
Air Ambulance



Standard Surface Base

# TECHNICAL SPECIFICATIONS

<b>Product Name</b>	Bracket Pro Serie® 76
<b>Product Description</b>	Dual disc bracket mounting system to secure the Tempus® Pro on surfaces, cots/ stretchers, floor and walls in emergency vehicles
<b>Compatibility of Medical Device</b>	Tempus® Pro from Philips®
<b>Environment of Usage</b>	EMS/CCT (Ground & Flight) – Hospital/Clinic, Military
<b>Product Section Material</b>	<ul style="list-style-type: none"><li>• Main Assembly: Aluminum 6061-T6</li><li>• Standard Bottom Disc: Aluminum 6061-T6 with 304 Stainless Steel Insert</li></ul>
<b>Product Finish</b>	<ul style="list-style-type: none"><li>• Main Assembly: Black-Anodized Finish</li><li>• Standard Bottom Disc: Silver-Anodized Finish</li></ul>
<b>Environmental Regulations</b>	Complying with RoHs 3
<b>Temperature of Usage</b>	-35° C to 45° C
<b>Certification</b>	Tested in Compliance with: <ul style="list-style-type: none"><li>• SAE J3043 (26 G)</li></ul> Designed to Comply with: <ul style="list-style-type: none"><li>• FAA-FAR-DOT 27.561 &amp; DOT 27.562 (Flight)</li></ul>
<b>Installation</b>	Locking Mechanism without Screws
<b>Attachment Options</b>	2 Locking Discs – Standard Bottom Disc – Anti-Rotation Micro Disc
<b>Transportation Compatibility System</b>	Compatible with Technimount's: <ul style="list-style-type: none"><li>• Standard Surface Base</li><li>• Safety Arm System (For Stryker Cots PowerPro – XT and Mx-Pro)</li><li>• Floor Mount (Flight)</li><li>• Wall Mount Systems</li><li>• Safety MD Transporter</li></ul>
<b>Features</b>	<ul style="list-style-type: none"><li>• Access to Printer and all Connectors and Accessories</li><li>• No Screws Attached to the Medical Device</li><li>• Red Quick Release to Easily Insert and Remove the Medical Device</li></ul>
<b>Physical Overall Dimensions</b>	<ul style="list-style-type: none"><li>• Bracket Pro Serie® 76 : Width 13.08 in, Depth 8.06 in, Height 12.27 in</li><li>• Bracket Pro Serie® 76 – SMT: Width 13.08 in, Depth 8.06 in, Height 13.82 in</li></ul>
<b>Weight</b>	<ul style="list-style-type: none"><li>• 5.87 lb – Bracket Pro Serie® 76</li><li>• 6.63 lb – Bracket Pro Serie® 76 – SMT</li></ul>
<b>Part Numbers</b>	<ul style="list-style-type: none"><li>• 320-10-PRO-RDT – Bracket Pro Serie® 76</li><li>• 320-10-PRO-RDT-SMT – Bracket Pro Serie® 76 – SMT</li><li>• 100-20-UN – Standard Surface Base</li></ul>
<b>Other Models and Configurations Options</b>	Contact Technimount EMS for more information or for other options at <a href="mailto:customerservice@technimount.com">customerservice@technimount.com</a>

\* Product and medical equipment manufacturers names are trademarks™ or registered trademarks® of their respective holders. Technimount does not have a commercial relationship with these medical equipment manufacturers.

# YOUR SAFETY IS OUR PRIORITY



## FEATURES

- ✓ Bracket respects access to medical device components and features
- ✓ One-Handed, Red Quick Release Mechanism located on the top of the bracket
- ✓ Bracket secures the medical device without screws
- ✓ Anti-Rotation Micro Disc and Standard Bottom Disc for support on various Technimount arm and wall systems
- ✓ Made from high-density aluminum with black-anodized finish with polyurethane plastic transport handle
- ✓ Tested in compliance with SAE J3043

## BENEFITS

- + Flexible for use in different applications (surface, floor, cot/stretcher, and wall systems) as well as other EMS or military environments
- + No interference with the medical device printer, components, connectors and wires
- + Easily install and remove the medical device and its Smart Mount from the mounting system
- + Access to medical device from all angles (360° rotation on Technimount's Standard Surface Base)
- + Resistant to biological fluids and Quaternary-type disinfectants for easy cleaning
- + Reduces the risk of damage to the equipment and ensures the safety of patients and crews during air and ground transport



Bracket Pro Serie® 76 - SMT for the Tempus Pro with Smart Mount

## SAFETY AND FLEXIBILITY WHERE IT MATTERS MOST

[technimount.com](http://technimount.com)

