

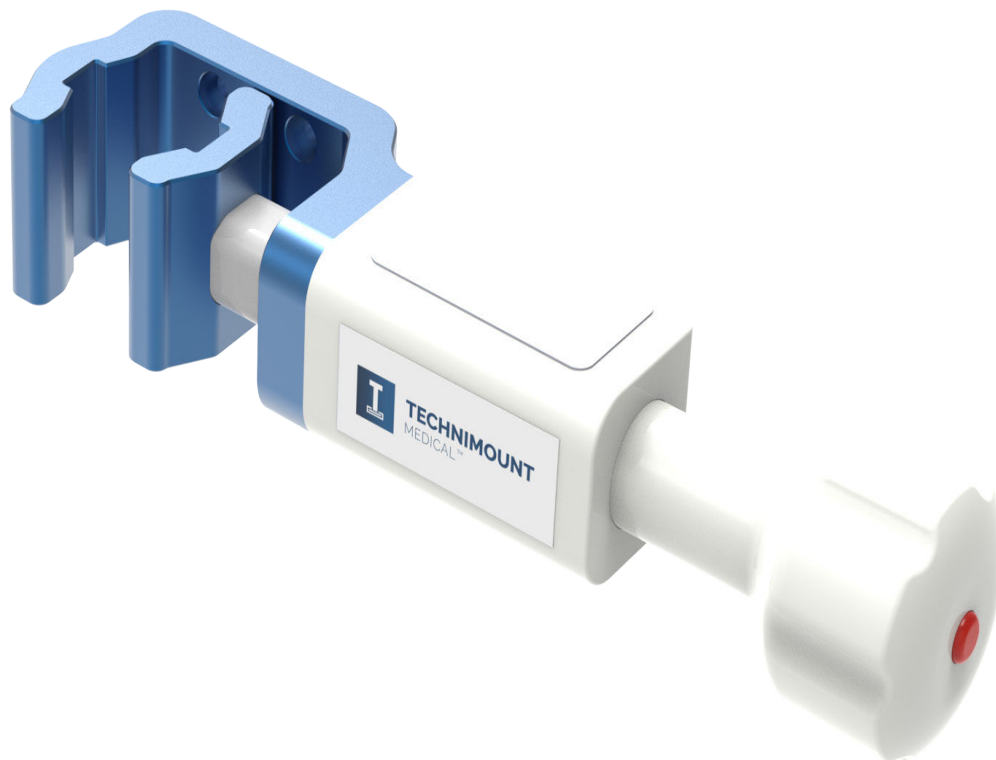


**TECHNIMOUNT**  
MEDICAL®

## TECHNI-CLAMP™

IV POLE AND RAIL CLAMPING SOLUTION  
FOR MEDICAL DEVICES

---



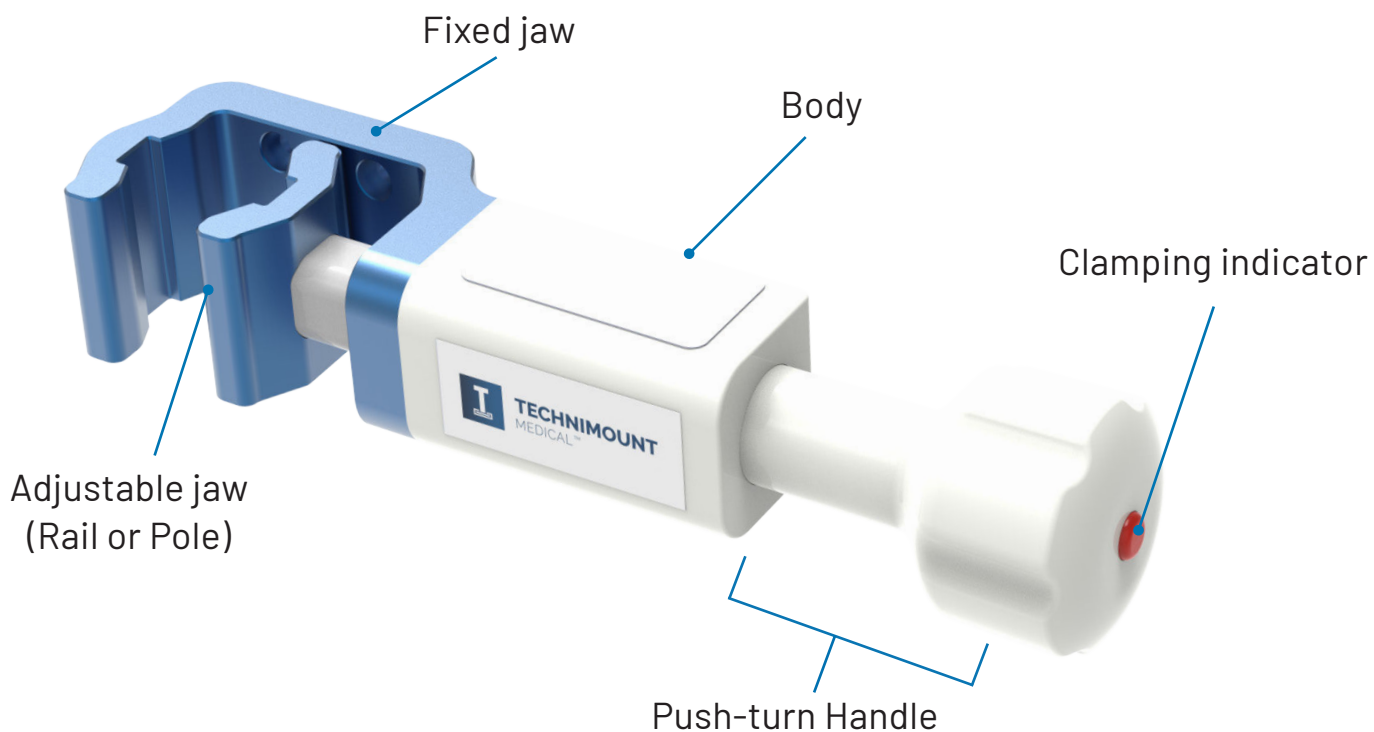
**MAKING HEALTHCARE PRACTICES  
MORE EFFICIENT**

# TECHNI-CLAMP™

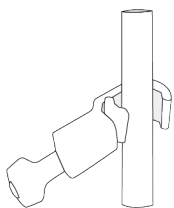
## Product Components

The Techni-Clamp outpaces the industry's fastest speed clamps, securing medical devices on IV poles and rails in as few as one and a half turns. Its revolutionary clamping indicator guarantees visibly safe mounting in every scenario.

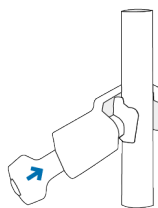
Combining an innovative fastening mechanism with unmatched ergonomics, the Techni-Clamp is a breakthrough solution, making it essential for patient care during intrahospital transfers.



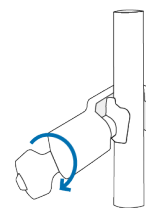
## EASY TO INSTALL : ONE AND A HALF ROTATIONS



1. Hook the clamp jaw against a pole



2. Push the handle until fully adjusted



3. To secure, turn the handle until the clamp lock Indicator appears

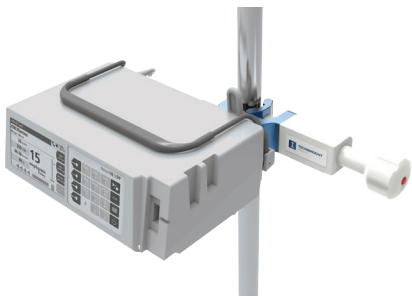
# TECHNI-CLAMP™

## Highlights

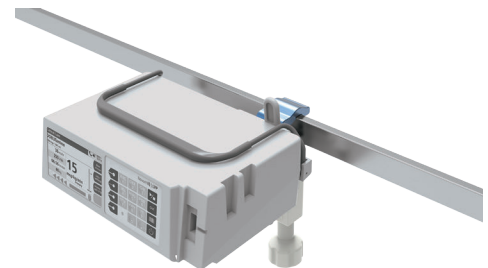
## FEATURES & BENEFITS

- Effortless fastening mechanism that allows the clamp jaw to open and close quickly, securing the medical device to the pole or rail instantly
- Secures the medical device with just one and a half turns, using the Push-Turn Handle to ensure ergonomic mounting
- Clamping indicator ensures secure mounting on the IV pole or rail
- Compatible with a multitude of IV poles or rails ranging from 19/16 in. to 1-1/2 in.
- Lower risk of injury for professionals due to a lightweight, ergonomic system that reduces repetitive motions when handling heavy devices
- Designed in compliance with IEC 60601-1
- Compatible with several medical devices, through different adapter plates, VESA plates and Flex Secur
- Can be positioned vertically or horizontally to comply with the user's needs
- Time-saving solution that allows healthcare professionals to focus on patient care
- Medical grade finish that allows for easy wiping and cleaning

## INSTALLATION OPTIONS



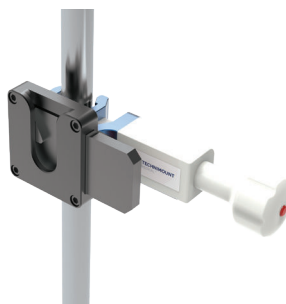
Fits IV poles and rails ranging from 9/16 in. to 1-1/2 in.



## CONFIGURATION OPTIONS



VESA plate



Flex Secur™



Adapter plates

# TECHNI-CLAMP™

## Technical Specifications

<b>Product Name</b>	Techni-Clamp™
<b>Description</b>	Mounting solution from the Technimount Healthcare System (THS) product line designed to secure on IV poles or rails, the multiple medical devices that are essential to patient care during intrahospital transfers and varied interdepartmental use.
<b>Product Code</b>	TCP-110-00
<b>Features</b>	<ul style="list-style-type: none"><li>• Clamp jaw opens and closes quickly</li><li>• Installation on a multitude of compatible IV poles or rails</li></ul>
<b>Operating Environment</b>	Hospital/Clinic
<b>Compliance</b>	Tested in compliance with IEC60601-1 (applicable mechanical sections)
<b>Compatible Medical System</b>	Infusion pumps
<b>Compatible Mounting System</b>	<ul style="list-style-type: none"><li>• IV poles and rails between 9/16 in and 1-1/2 in. (14 mm to 38 mm)</li><li>• Adapter plate (varies depending on the type of medical device)</li></ul>
<b>Dimensions (L X P X H)</b>	<ul style="list-style-type: none"><li>• Techni-Clamp, clamp jaw completely closed: 7.01 in. X 1.95 in. X 1.375 in. (17.81 cm X 4.95 cm X 3.49 cm)</li><li>• Techni-Clamp, clamp jaw completely open: 8.62 in. X 1.95 in. X 1.375 in. (21.89 cm X 4.95 cm X 3.49 cm)</li></ul>
<b>Weight</b>	0.69 lb (0.31 kg) without adapter
<b>Composition</b>	<ul style="list-style-type: none"><li>• Techni-Clamp: aluminum, plastic</li><li>• Hardware: stainless steel</li></ul>
<b>Safe Working Load (SWL)</b>	15 lb (6.80 kg) total
<b>Operating Temperature</b>	31° F to 113° F (- 35° C to 45° C)
<b>Installation</b>	<ul style="list-style-type: none"><li>• The adapter plate is installed on the Techni-Clamp using four (4) screws</li><li>• The medical device is installed on the adapter plate using screws. Depending on the type of medical device, the required quantity of screws and model may vary.</li><li>• The Techni-Clamp is installed on the IV pole or rail by a clamp jaw and secured by a locking mechanism located in the handle</li></ul>
<b>Model &amp; Configuration Options</b>	<ul style="list-style-type: none"><li>• Adapter plate</li><li>• Contact Customer Service at <a href="mailto:customerservice@technimount.com">customerservice@technimount.com</a> for more options</li></ul>



[technimount.com](http://technimount.com)

Technimount Medical, and THS are Trademarks of Technimount System.

© 2025 Technimount Medical Inc. - All Rights Reserved - Printed in Canada

BR-TC-202501EN-01