



TECHNIMOUNT
EMS®

TECHNI-INO

MOUNTING SYSTEM FOR A D-SIZE INOMAX
GAS CYLINDER ON STRETCHERS AND WALLS



SAFETY AND FLEXIBILITY
WHERE IT MATTERS MOST

TECHNI-INO

Product Components

The Techni-INO safely secures a D-Size INOmax gas cylinder during EMS and critical care transport. Designed for maximum flexibility, it can be mounted on the head-end, foot-end or side of a stretcher as well as on an ambulance wall using our Flex Secur™ technology.

With its intuitive design and compact footprint, the Techni-INO delivers exceptional adaptability without compromising space. This solution is tested in compliance with the industry's highest safety standards, SAE J3043.



TECHNI-INO

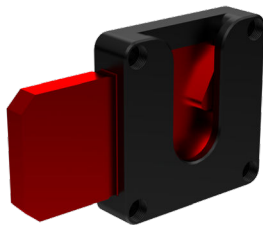
Highlights

FEATURES & BENEFITS

- Tested in compliance with SAE J3043
- Compatible with our Flex Secur technology, allowing various configurations on stretchers or ambulance walls
- Protects the INOmax cylinder and its regulator, extending the lifespan of the equipment
- Locking rod to remove cylinder from the Techni-INO
- Gas cylinder retainer with adjustment knob to firmly hold the cylinder in place
- Transport handle for easy deployment of the gas cylinder inside its bracket
- Stabilizing feet for proper positioning on flat surfaces
- Optional accessory pouches available
- Eyelets for attaching an optional shoulder strap

Possible Configurations

Flex Secur technology allows equipment brackets, such as the Techni-INO, to be securely mounted on stretchers or ambulance walls. Its quick release mechanism enables fast installation and removal.



Flex Secur™



Walls / doors



Patient head



Side



Patient foot

TECHNI-INO

Technical Specifications

Product Name	Techni-INO
Description	Portable mounting bracket designed to aid trained EMS and clinical personnel secure and transport a D-Size INOmax gas cylinder
Product Code	3440-10-TN0
Operating Environment	EMS/CCT (ground)
Compliance	Tested in compliance with SAE J3043 and AMD-028
Compatible Mounting System	Flex Secur
Compatible Medical Device	<ul style="list-style-type: none"> - D-Size INOmax gas cylinder - INOmax high-pressure regulator
Dimensions (W X D X H)	<ul style="list-style-type: none"> - Techni-INO: 302.26 mm X 175.26 mm X 551.18 mm (11.9 in. X 6.9 in. X 21.7 in.) - Optional accessories: <ul style="list-style-type: none"> - PAX shoulder strap: 1625.6 mm L (64 in. L) - PAX oxygen bag: 127 mm X 127 mm X 76.2 mm (5 in. X 5 in. X 3 in.)
Weight	<ul style="list-style-type: none"> - Techni-INO: 3.3 kg (7.3 lb) - Optional accessories: <ul style="list-style-type: none"> - PAX shoulder strap: 0.14 kg (0.3 lb) - PAX oxygen bag: 0.23 kg (0.5 lb)
Composition	<ul style="list-style-type: none"> - Techni-INO: Stainless steel, plastic and rubber - Optional accessories: <ul style="list-style-type: none"> - PAX shoulder strap: stainless steel, plastic and nylon - PAX oxygen bag: plastic
Total Safe Working Load (SWL)	8.17 kg (18 lb)
Operating Temperature	- 35° C to 45° C (- 31° F to 113° F)
Options	<ul style="list-style-type: none"> - PAX shoulder strap: 3430-21-UN - PAX oxygen bag: 3430-20-PX



technimount.com

Bracket Pro Serie, Technimount EMS are Registered Trademarks of Technologies CGC Inc.

All medical device product and company names are trademarks™ or registered® trademarks of their respective holders.

© 2026 Technimount EMS Holding Inc. - All Rights Reserved - Printed in Canada

BR-TECHNI-INO-202602EN-01