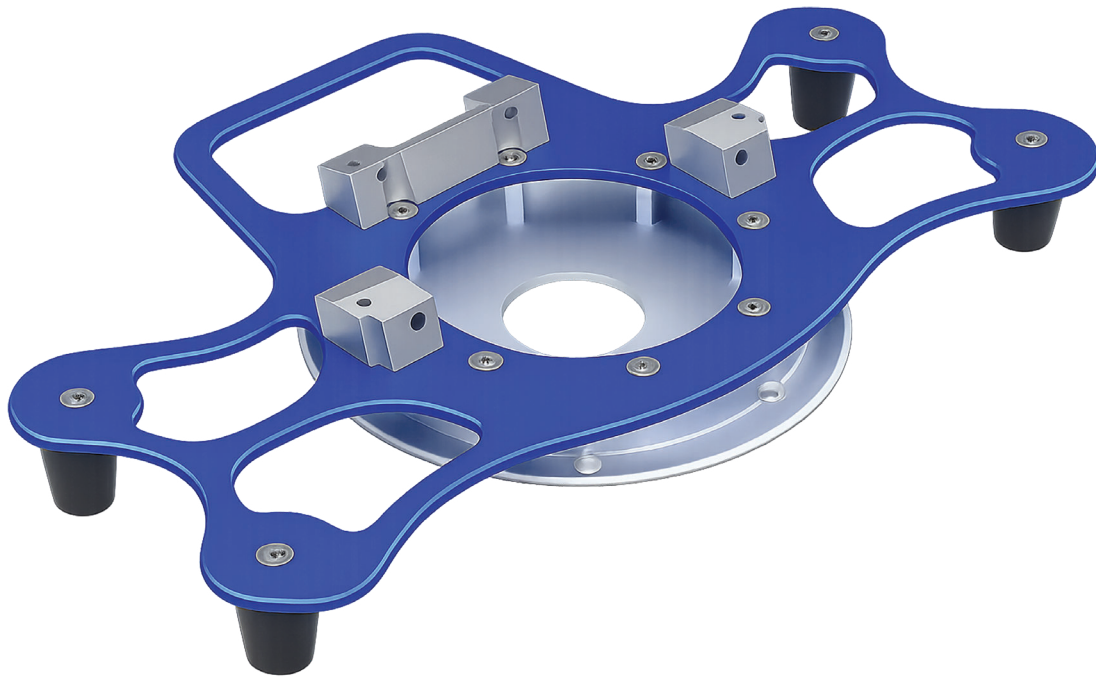




TECHNIMOUNT
EMS®

BRACKET PRO SERIE® 25 HD-FL

MOUNTING SYSTEM FOR ZOLL® X SERIES® MONITOR/
DEFIBRILLATOR



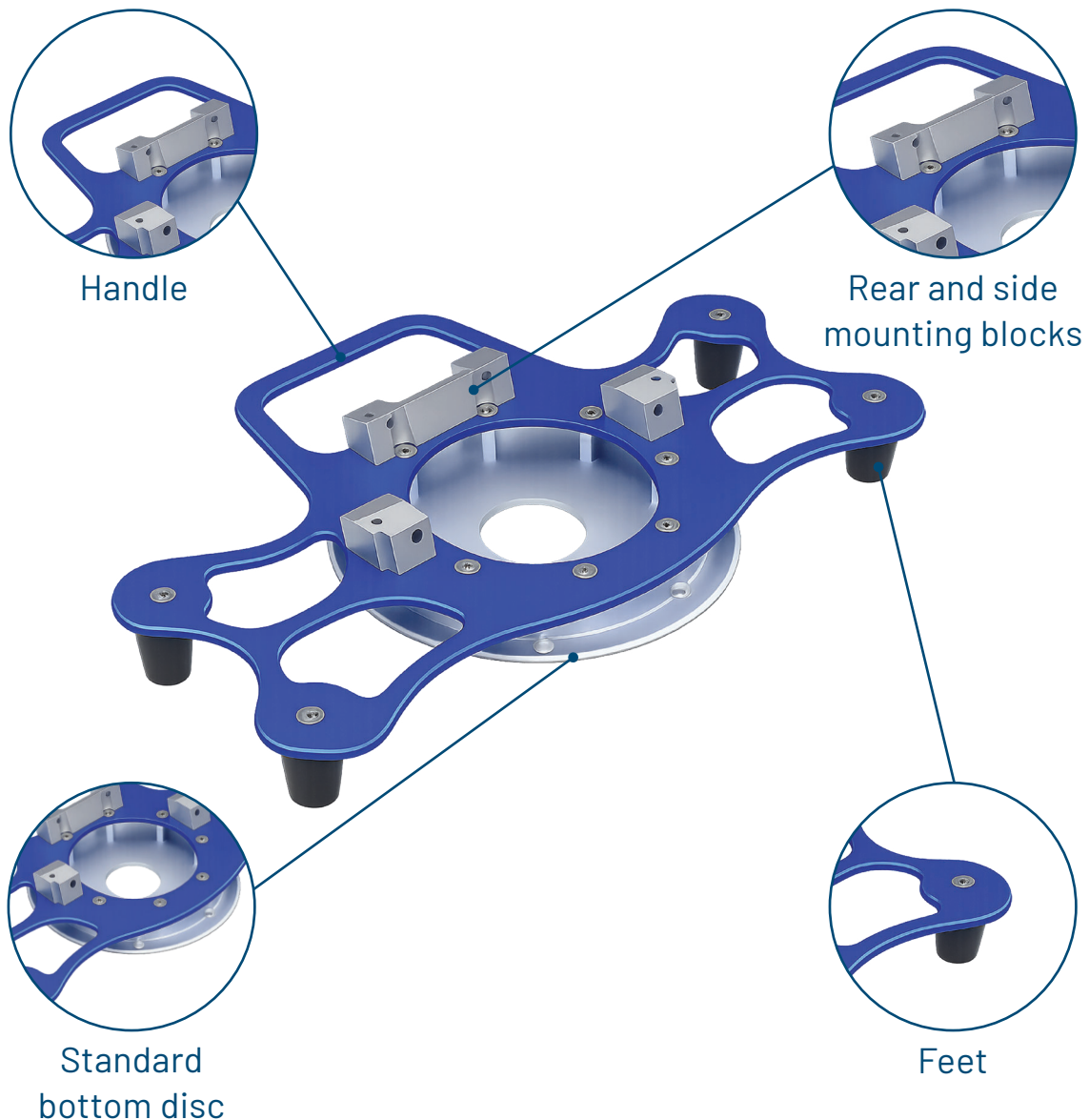
SAFETY AND FLEXIBILITY
WHERE IT MATTERS MOST

BRACKET PRO SERIE® 25 HD-FL

Product Components

The Bracket Pro Serie® 25 HD-FL is designed to secure the ZOLL® X Series® monitor/defibrillator during EMS ground and air transport. Engineered for durability and practicality, this rugged solution is tailored to withstand the demands of emergency situations, while maintaining minimal footprint in the aircraft.

The Bracket Pro Serie 25 HD-FL is tested in compliance with the most rigorous safety standards for EMS ground and air transport of medical equipment.



BRACKET PRO SERIE[®] 25 HD-FL

Highlights

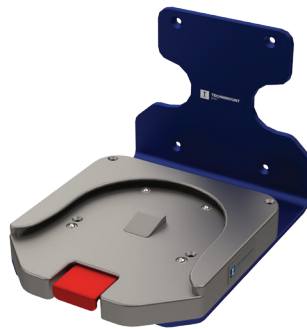
FEATURES & BENEFITS

- Lightweight, compact bracket that respects the integrity and functionality of the medical device.
- Supports multiple mounting configurations on surfaces, walls or stretcher systems
- Minimizes the risks of damage or replacement of the equipment.
- Durable bracket made from resistant aluminium with blue anodized finish.
- Acetal feet to place the bracket on any flat surface.
- Quick installation and removal of bracket.
- Access to medical device from all angles (360° rotation).
- No interference with the device's connectors and wires.
- Tested in compliance with 14 CFR 23.561 & 25.561 & 27.561 & 29.561 and SAE J3043, for safe transport of the monitor/defibrillator.

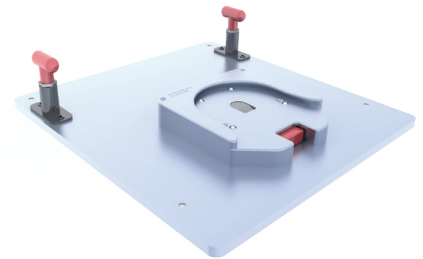
Possible Configurations



Standard Surface Base



Wall Mount Pro-FL



Floor Mount

BRACKET PRO SERIE® 25 HD-FL

Technical Specifications

Product Name	Bracket Pro Serie 25 HD - FL
Description	Mounting bracket designed to aid trained EMS and clinical personnel move the ZOLL X Series monitor/defibrillator that is essential to patient care during emergency medical services and critical care
Product Code	100-15-XZ-HD-FL
Operating Environment	EMS/CCT (air and ground)
Compliance	<ul style="list-style-type: none">• Tested in compliance with 14 CFR 23.561 & 25.561 & 27.561 & 29.561 (for further details, contact Regulatory Affairs at customerservice@technimount.com)• Tested in compliance with SAE J3043 and AMD-028
Compatible Mounting System	<ul style="list-style-type: none">• Standard Surface Base• Extended Surface Base• Universal Mounting Base
Compatible Medical Devices/ Accessories	ZOLL X Series monitor/defibrillator
Dimensions (L X P X H)	330.2 mm X 203.2 mm X 50.8 mm (13.25 in. X 8.6 in. X 2.19 in.), w/o the medical device
Weight	2 lb (0.91 kg), w/o the medical device
Composition	<ul style="list-style-type: none">• Bracket Pro Serie 25 HD - FL: aluminum, stainless steel• Standard bottom disc: aluminum
Total Safe Working Load (SWL)	17.6 lb (8 kg)
Operating Temperature	- 31° F to 113° F (- 35° C to 45° C)
Options	N/A



[technimount.com](https://www.technimount.com)

Bracket Pro Serie, Technimount EMS are Registered Trademarks of Technologies CGC Inc.

All medical device product and company names are trademarks™ or registered® trademarks of their respective holders.

© 2026 Technimount EMS Holding Inc. - All Rights Reserved - Printed in Canada

BR-BP25-HD-FL-202604EN-01