

Bracket Pro Serie™ 60

Mounting system for ventilator Hamilton Medical HAMILTON-T1

Characteristics

- Lightweight
- Compact size
- Swivel base 360° with locking system
- Quick Release and re-attachment
- Safe and Easy
- Immediate access
- Match with other mount system from us
- Certified SAE J3043 (in process)

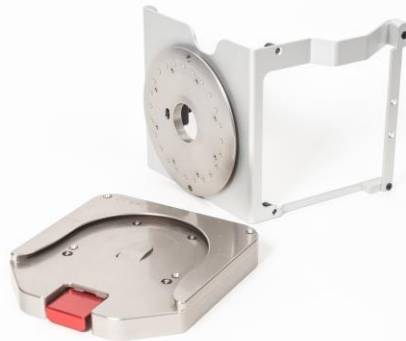
Application of use

- Ambulance
- EMS Vehicles
- Military Vehicles
- Stretcher/cot
- Crash cart
- ER Wall installation
- Arm extension
- Bed mounts
- Intensive care

Advantages

- Minimum space for installation
- Latex free
- Resist to the biological fluid
- Insensitive to rust
- 1 year full warranty

Any medical equipment that has been inadequately installed in ambulances, other emergency medical service (EMS) vehicles or crash carts, can potentially pose a serious risk or become dangerous in the event that the vehicle makes frequent or sudden stops, turns or rushed departures. This situation can result in damaged expensive medical equipment or even inflict injuries on a patient, ambulance personnel or clinic staff.



Our mount systems **Bracket Pro Serie™ 60** are designed for specific installation on a ventilator Hamilton T-1 using a surface base, for fast access to the unit, in times of emergency uses. The features of this support are the very small size (weight) and the specific positioning of installation on a cot, surface or in emergency room or clinics. This new adapter is designed to be installed on a surface base to give many positions to have access to the

medical equipment. This brand-new system is designed to get the use of the medical equipment easier during a patient intervention. The Bracket Pro Serie™ 60 (Universal or short base only) is the perfect option to keep the uniformity in your fleet of devices. The base support is locked on the platform and the 360-degree rotation feature gives you access from anywhere to the unit. The system has been tested to meet the SAE 3043 requirement and the manufacturer requirements and provide with all the safety and security in hospital environment. The installation of the product is very simple and takes only just a few minutes, on the base.



About Us

Technimount System Inc. creates mounts and brackets for portable medical devices such as defibrillators, ventilators, and pumps, that adapt to different brands of medical equipment for OEM ambulance manufacturers, EMS users, and hospitals.

For use with model Hamilton Medical ventilator « [HAMILTON-T1](#) »

TECHNICAL SPECIFICATIONS

Product name:	Bracket Pro Serie™ 60	
Compatibility model:	Ventilator HAMILTON-T1	
Environment of use:	EMS / Hospital – Clinic – Biomed shop – Military hospital	
Material:	Base: Aluminum high density w/ anodize process	
Temperature of use:	- 35 ° C @ 45 ° C (Direct conduction)	
Impact Resistance¹:	(30 G - Force) According to the SAE J3043 <i>(In Process)</i>	
Nbr of installation point:	4 points on surface base: up to 5 points on bracket mount	
Dimensions support:	7-1/2" Width X 9" Depth X 1/4" Thick. (inch.)	
Weight:	Support: 1.55 lbs. – 706 g	
Rotation:	360° Surface base on the arm support with locking system	
Mechanical Installation:	Sliding insert with locking system and set screws	
Features:	<u>Compatible with:</u> Surface base: Standard or Extended from Technimount	
Options:	Standard or Extended Surface base Back vertical hook mount	
Part number²:	700-00-HM	Bracket Pro Serie 60 complete (std base)
	700-00-HMBH	Bracket Pro Serie 60 with back hook
	700-10-HM	Bracket Pro Serie 60 / bracket section only
	100-20-UN	Standard Base section only



Installation suggested

¹ *Technimount System Inc* works to meet and exceed all legal requirements in the deployment system for EMS vehicles, and hospital regulations according to the Provincial & Federal Government regulations, it may not meet your local requirements, please contact your administrator.

² Part number must be confirmed prior sending purchase order. *Technimount System Inc* reserves the right to make changes on the product, documents and technical specifications without notice and responsibilities. DOCUMENTS PRINTED IN CANADA
CGC Technologies – Division of Medical equipment & accessories – Registered brand 2013.