

Wall Mount Pro™

Bracket mounting system for wall installation

Characteristics

- Lightweight
- Compact size
- Quick Release and re-attachment
- Safe and Easy
- immediate access
- Match with **Bracket Pro** series mount system from us.

Application of use

- Ambulance
- EMS Vehicles
- Helicopter
- Aircraft
- Stretcher/cot
- Military Vehicles

Advantages

- Minimum space for installation
- No vertical release
- Latex free
- Resist to sodium and the biological fluid
- Insensitive to rust
- Full warranty for 1 year

Any medical equipment that has been inadequately installed in ambulances, other emergency medical service (EMS) vehicles or crash carts, can potentially pose a serious risk or become dangerous in the event that the vehicle makes frequent or sudden stops, turns or rushed departures. This situation can result in damaged expensive medical equipment or even inflict injuries on a patient, ambulance personnel or clinic staff.



Our mount systems **Wall Mount Pro** are designed for specific installation and fast access to the unit, in times of emergency uses. The features of this support are the very small size (weight) and the specific positioning of installation on a wall in a vehicle. This new mount is designed to be installed on a structure or a wall to give another position to have access to the medical equipment. This brand-new system is designed to get the use of the medical equipment easier during a patient transportation. The wall mount accepts the surface base **Bracket Pro** series (*Universal or short base only*). Perfect option for retrofit on an actual layout of an ambulance. The base support locking and the rotation feature are still active with this, however limited by the distance from the wall to the back of the unit, it rotates on 15 degrees on each side. The system has been tested to meet the manufacturer requirements and provide with all the safety and security in patient transportation. The installation of the product is very simple and takes only just a few minutes, on the base. The **Wall Mount Pro** adapter allows you to install the **Bracket Pro Serie™** on wall, instead of a working surface or a cot installation. The **Wall Mount Pro™** comes with a standard surface base and it can be adapted with Bracket Pro 25, 30, 35 and 40. The deployment of the unit is almost instantaneously and the system locked the unit after use and resist to an impact of many times the «G» Force.

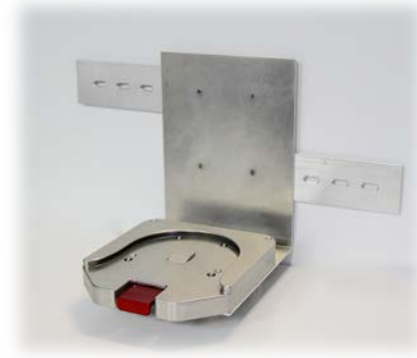
About Us

Technimount System Inc. creates mounts and brackets for portable medical devices such as defibrillators, ventilators, and pumps, that adapt to different brands of medical equipment for OEM ambulance manufacturers, EMS users, and hospitals.

For use with model **Technimount System Series « Bracket Pro™ »**

TECHNICAL SPECIFICATIONS

| | |
|---------------------------------------|---|
| Product name: | Wall mount Pro |
| Compatibility model: | Bracket Pro series 25, 30, 35, 40 |
| Environment of use: | EMS / Hospital – Clinic – Biomed shop – Military hospital - |
| Material: | Base: Aluminum high density w/ anodize process Plate section: Aluminum high density w/ anodize process |
| Temperature of use: | - 35° C @ 45° C (Direct conduction) |
| Impact Resistance¹: | (30«G») According to the Bracket Pro model |
| Nbr of installation point: | 4 points on surface base: 4 points on plate adapters |
| Dimensions support: | 7-1/2" Width X 8" Depth X 10" High X 1/4" Thick. (inch.) |
| Dimensions plate adaptor: | 15" length X 1-1/2" width X 1/4" Thickness (inch.) |
| Rotation: | 15° degrees both sides with locking system |
| Mechanical Installation: | 90° flush wall w/ bracket adapter (2) on certified structure |
| Features: | Compatible with extended surface base (Spacer Pro) |
| Weight: | Support: 1.55 lbs. – 703 g Plate each: 0.34 lb. - 156 g. |
| Options: | Spacer (height extension mount 3/8", 1/2", 3/4") |
| Part number²: | 600-00-WMA "Wall mount Pro" complete 610-00-WMA 90° "L-shape and plate adapters (2) |



Installation suggested

¹ *Technimount System Inc* works to meet and exceed all legal requirements in the deployment system for EMS vehicles, and hospital regulations according to the Provincial & Federal Government regulations, it may not meet your local requirements, please contact your administrator.

² Part number must be confirmed prior sending purchase order. Technimount System inc reserves the right to make changes on the product, documents and technical specifications without notice and responsibilities. DOCUMENTS PRINTED IN CANADA
CGC Technologies – Division of Medical equipment & accessories – Registered brand 2013.
ZOLL® and X Series® are trademarks registered trademarks of ZOLL Medical.