

INSTRUCTION GUIDE

FOR

INSTALLATION BRACKET PRO SERIE 35™

MOUNTING SYSTEM FOR MEDICAL DEVICE

INSTALLATION FOR:
PHYSIO-CONTROL LIFEPAK 15™

Version 3.2 English

INSTRUCTIONS FOR BRACKET PRO SERIE 35™

WARNING:

We do our best to manufacture a product with high quality. However, it may happen that some section on the parts can be very cutting and sharp, please handle with care.

Description:



This bracket mounting system comes in two sections; one section (part 1) to be installed on the medical device (*Physio- Control LIFEPAK 15*); and the second section (part 2) to be installed into the vehicle or on crash cart. This instruction concerns the installation on the bracket mounting on the device only. **The second part, the support base mounting (part 2) must be installed by a professional, on certified mounting points on a horizontal surface.** To fix it, 4 points of insertion of bolt must be used; we recommend using those four points.

Contents:

- 1 X Bracket mounting round swivel (*to be installed under the medical device*) (figure 1)
- 1 X Support mounting (base plate) to be installed on a surface in the vehicle or crash cart (figure 2)
- 4 X Screw 8-32" x 1/2" Philips (star)- (*under the unit*)
- 3 X Screw 6-32" x 5/8" Philips (star) - (*front of the unit*)
- 2 X Screw 6-32 x 1-1/2" Philips (star) - (*Back of the unit*)
- 1 X Instruction sheet

**** Screws for support base mounting are NOT provided with your package; installer will choose the appropriate screw, or bolt and nut according to the installation points. ****

Tools required:

- 1 x Philips screwdriver (star);
- 1 x Fuller screwdriver Torx T15 (1/4")

Identification of the product (*real product might be different than the picture above*)



Figure 1
- Bracket mounting



Figure 2
- Support base mounting



Figure 3
- Screws

Instructions for part one (bracket mounting on the medical device)

Step 1. (*Remove the batteries*) – Removed in order to be safe and not damage them.



- ✓ Just simply push on the side and pull it toward you to remove it.
- ✓ Remove the batteries allow you to properly fit the back plate during installation.

Step 2. (*Remove the bottom screws*)



- ✓ Unscrew the four screws under the unit, in order to install the bracket mounting.

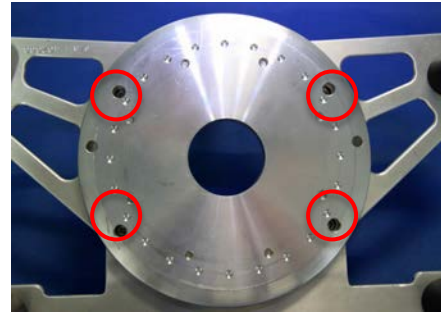
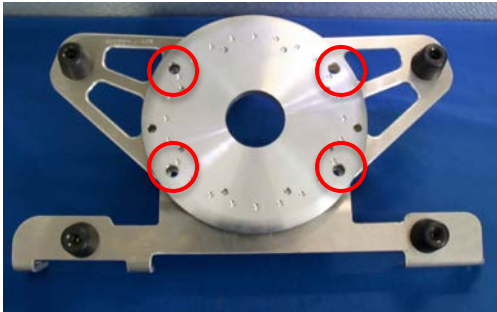
Please note that they might already be removed from your unit.

(Removing the side screws of the rubber protectors)

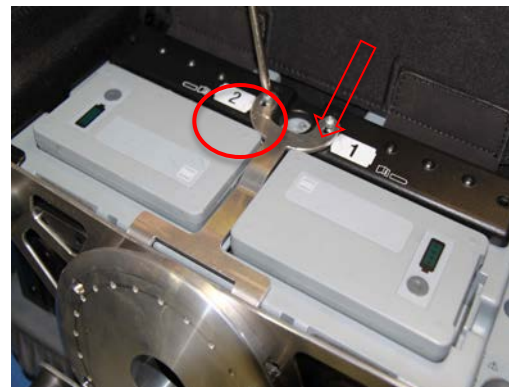
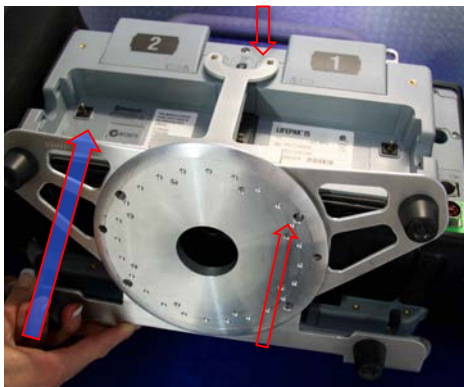
- ✓ Unscrew the three front screws of the protector at the front, on each side of the device with the screwdriver Torx T15.



Step 3. (Install the device bracket mounting) –

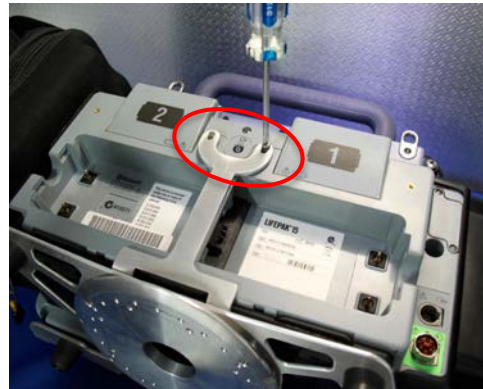
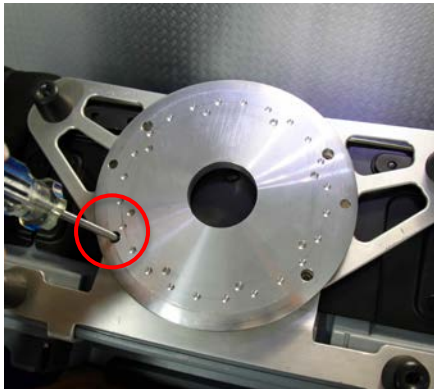


- ✓ Align the 4 screws 8-32 x 1/2" with the 4 holes under the device, facing bottom device and screw them in place with the screwdriver Philips.



- ✓ Place the bracket under the unit, aligned with the back plate, in order to reach the 2 holes between the batteries for the 2 top screws 6-32" X 1-1/2". (pictures may be different)
- ✓ Screw the screws on the top first, and do not tight them until you installed all the 6 screws on the device.
- ✓ If you have a back pocket behind the device, you need to install the plate of the bag under the "Y" shape of the mounting plate; make sure the screws are well aligned with the holes before you start to install them.

Step 4. *(Tighten the 4 bottom screws)*



- ✓ You need to align the 4 screws 8-32 x 1/2" prior to tighten all, starting with one or two turns to start the thread and have the screws in place.
- ✓ Once all are aligned with the threads, tighten all.
- ✓ Push the back plate and tighten those as well.
- ✓ Review all the screws installed and tighten normally.

Step 5. *(Finalizing the front screws)*



- ✓ Screw the three front screws 6-32" X 5/8" on each side, in order to properly install the bracket on the device.
- ✓ Review all the screws installed and tighten normally.

Step 6. (*Install the batteries on the device*)



- ✓ Re-install the batteries as shown and make sure there is not interference with the back plate of the bracket mounting.
- ✓ You should have an easy access to the batteries without restriction, if so, please unscrew the screws at the bottom and the top.
- ✓ Re-align the bracket mounting with the device while pushing on, screw the four screws at the bottom first and align it again with the top ones.



Final installation suggested on surface base

Instructions for part two (Support mounting on a surface in the vehicle)**WARNING:**

The second part, the support base mounting (part 2) must be installed by a professional recognized in the industry, on certified mounting points on a horizontal surface. In order to fix it, 4 points of insertion of bolt must be used; we recommend using those four points.

NOTE:

PLEASE VERIFY YOUR LOCKING MECHANISM ON THE BASE PART PRIOR THE FINAL INSTALLATION ON YOUR SURFACE, IN ORDER TO DETECT ANY MALFUNCTION.



Final installation suggested

MAINTENANCE:

We recommend cleaning the disc under the medical device after each use, and the surface base mount as well, after each use. In order to prevent any malfunction or issue, clean carefully the components, at least once a month with a soft soap and linen, to remove any dust or small particles on the mounting bracket. **Do NOT disassembly the mechanism**, if you suspect any malfunction, please contact us.

If you have any question, please call your distributor or Technimount System at +1.581.998.9820 or email us at: info@technimount.com or techsupport@technimount.com <https://www.technimount.com/contact-us/> ; for more details go on www.technimount.com

Thank you !