

INSTALLATION GUIDE

INSTALLATION BRACKET PRO SERIE 45

Mounting bracket for medical device

INSTRUCTION FOR: **PHYSIO CONTROL Lifepak 20™** **-WITH or WITHOUT CHARGER -**

Version 3.0 English

INSTRUCTIONS FOR BRACKET PRO SERIE 45

WARNING:

We do our best to manufacture a product with high quality. However, it may happen that some section on the parts can be very cutting and sharp, please handle with care.

Description:



This bracket mounting system comes in two sections; one section (part 1) to be installed on the medical device (Physio- Control LIFEPAK 20); and the second section (part 2) to be installed on a surface or on crash cart. This instruction concerns the installation on the bracket mounting on the device only. **The second part, the support base mounting (part 2) must be installed by a professional, on certified mounting points on a horizontal surface. To fix it, 4 points of insertion of bolt must be used; we recommend using those four points.**

Contents:

- 1 X Bracket mounting round swivel (to be installed under the medical device) (figure 1)
- 1 X Support mounting (base plate) to be installed on an horizontal surface or crash cart (figure 2)
- 3 X Screws installation 6-32 x 5/8" Philips Stainless steel
- 1 X Instruction Guide

OPTIONAL

- 3 X Cone-shape screw support – (Parts needed only for the installation of the charger / ETC02 module)
- 3 X Installation screws 6-32 x 1-7/8" (Screws needed only for the installation of the charger / ETC02 module)

***** Screws for support base mounting are NOT provided with your package; Installer will choose the appropriate screw, or bolt and nut according to the Installation points. *****

Tool required:

- 1 x Philips screw driver (star)

Identification of the product:



Figure 1 : Bracket –Device section



Figure 2 : Surface Base



Figure 3 : Screw kit installation

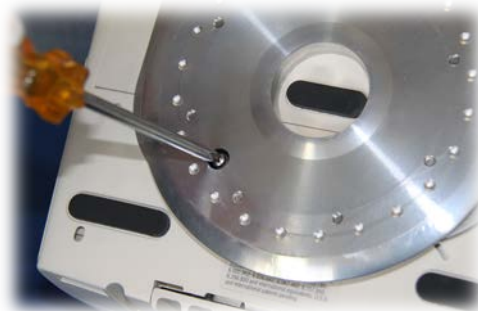
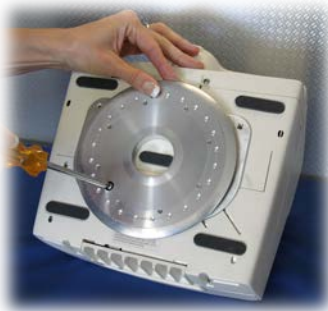
**Instructions for the 1st Section - (Bracket for medical device to be installed- *WITHOUT CHARGER* -)
If your device has a charger / ETC02 Module, please go directly to step 3.**

Step 1. (Bracket Installation) - INSTALLATION WITHOUT CHARGER -

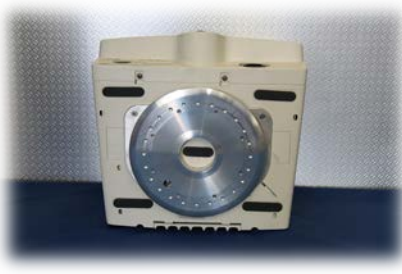


- ✓ If the medical device has a carry case or a charger, please remove those, prior to install the bracket. If the unit has a charger / ETC02 module, it will be addressed later into the instructions.
- ✓ Turn upside down the unit in order to install the bracket under it.

Step 2. (Fixing the bracket under the unit) -



- ✓ Align the three (3) holes of the bracket with the threaded holes under the unit.
- ✓ Install the three (3) short screws 6-32 x 5/8" with a proper alignment before to tight them all, one after one.



Installation WITHOUT module charger / ETC02

Step 3. (Installation with charger / ETC02 module) - **OPTIONAL STEP**; If the unit is equipped of a charger or ETC02 module, please follow those steps, if not please go to surface base installation.



Important - Optional step

If the unit has a charger / ETC02 module, or if it is added later, you will need the cone-shape support and the longer screws provided into the package.

Step 4. (Install the bracket under the charger / ETC02 module) -



- ✓ Identify the holes under the charger / ETC02 module to insert the cone-shape support.
- ✓ Install the cone-shape support provided, into the holes of the charger, by the sharpened head first into the holes.

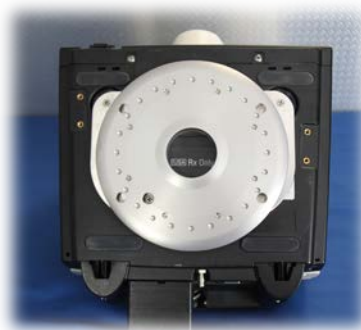


- ✓ Align the screws 6-32 x 1-7/8" into the cone-shape support in order to fix it on the medical device.
- ✓ Smoothly slide the charger / ETC02 module, and make sure you'll align the screws with all the three (3) holes under the unit.
- ✓ Validate that the three (3) screws are aligned with the threaded holes, prior to tighten the screws.

Step 5. (Screw the bracket under the module) – Secure the bracket (disc) under the medical device



- ✓ **Align the three holes prior to tighten any screw, and make sure that the module is properly aligned with the medical device as well.**
- ✓ **Once you're sure all is perfectly aligned with the threaded holes, screw them tightly.**
- ✓ **The unit is now ready to be installed horizontally on a surface base, or on the crash cart.**



Installation WITH charger module / ETC02

Instructions for part two (Support mounting on an horizontal surface or on a crash cart)

WARNING:

The second part, the support base mounting (part 2) must be installed by a professional recognized in the industry, on certified mounting points on a horizontal surface. In order to fix it, 4 points of insertion of bolt must be used; we recommend using those four points.

NOTE:

PLEASE VERIFY YOUR LOCKING MECHANISM ON THE BASE PART PRIOR THE FINAL INSTALLATION ON YOUR SURFACE, IN ORDER TO DETECT ANY MALFUNCTION.



Final installation suggested

MAINTENANCE:

We recommend cleaning the disc under the medical device after each use, and the surface base mount as well, after each use. In order to prevent any malfunction or issue, clean carefully the components, at least once a month with a soft soap and linen, to remove any dust or small particles on the mounting bracket. Do NOT disassembly the mechanism, if you suspect any malfunction, please contact us.

If any question, please call your distributor or Technimount System at 581.998.9820 or email us at: info@technimount.ca or techsupport@technimount.com

For more details about our products, please visit: www.technimount.com

Thank you !