

INSTRUCTION GUIDE

FOR

INSTALLATION BRACKET PRO SERIE 25™

MOUNTING SYSTEM FOR MEDICAL DEVICE

INSTALLATION FOR:

ZOLL X Serie™

Welch Allyn – Propaq M...MD™

Version 4.0 English

INSTRUCTIONS FOR BRACKET PRO SERIE 25™

WARNING:

We do our best to manufacture a product with the highest quality control measures possible. However, it is possible to encounter a part that may exhibit sharp edges, please handle with care.

Description:



This bracket mounting system comes in two parts; Part (1) Bracket - to be installed on the medical device (*ZOLL X Series Defibrillator or Welch Allyn Propaq MD, or Propaq M*) and Part (2) Surface Base - to be installed into the vehicle or on a crash cart. These instructions relate to the installation of the medical device bracket. **Part (2), the surface base must be installed by a professional or is industry certified, on validating installation points on a horizontal surface.** To install the surface base, there are 4 drilled holes on the support base where 4 bolts are inserted to secure the surface base to the surface; we recommend using all four attachment points.

Contents:

- 1 X Mounting Bracket round swivel (*to be installed under the medical device*) (figure 1)
- 1 X Mounting Surface base (support base) to be installed on a surface in the vehicle or crash cart (figure 2)
- 2 X Screw M4 .70 mm x **25** mm
- 2 X Screw M4 .70 mm x **30** mm
- 1 X Instruction sheet

**** Mounting hardware for the surface base is NOT provided with your package; installer will have to select the appropriate length and type of bolt and nut combination according to the mounting/attachment points. ****

Tools required:

- 1 x Philips screw driver (star); with diameter of the shaft smaller than 5 mm or 3/16

Identification of the product



Figure 1 – **Bracket** mounting



Figure 2 – **Support base** mounting



Figure 3 – Screw M4-.7mm

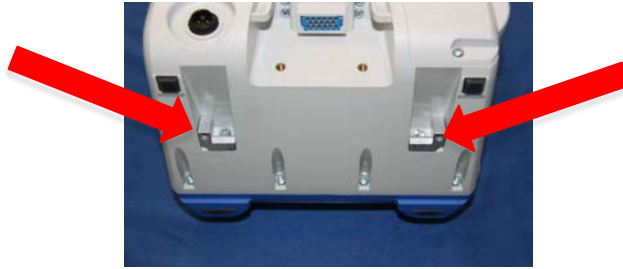
SPECIAL NOTE:

During the installation process, Technimount System recommends the use of Loctite 2400 (Blue) to avoid premature loosening of screws during regular use.

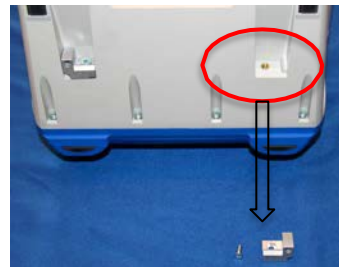


Instructions for Part 1 (mounting bracket on the medical device)

Step 1. Remove the original blocks connectors on the device – may be already removed



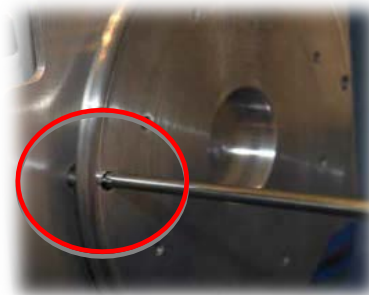
✓ Unscrew the screw into the block on the left and right side



✓ Put the blocks aside, they won't be used in this installation.

Step 2. Install the locking blocks on the device

✓ Unscrew the screws (*left and right*) from the bottom of the plate to separate the blocks from the plate; note: the screws will remain between the two pieces.



Step 3. *Install the locking blocks on the device*

- ✓ Screw the screws (*left and right*) from the top of the blocks, using one screw M4 .70 mm x 30 mm, per side (included in your package).

**Step 4.** *Install the device section (disc) with the locking blocks*

- ✓ After, push the support with the disc (*figure 1*) to the bottom of the device, in order to align the screws and the holes.
- ✓ Screw the screws (*left and right*) by the hole, aligned with the screw; but not too tight, because all the screws will be tighten at the end.

**Step 5.** *Install the top locking blocks*

- ✓ Align the screws and tight them (*left and right*) on the top using the screw M4 .70 mm x 25 mm (included in your package)



Step 6. Finishing the installation

- ✓ Screw the screws at the bottom tightly with normal torque on both sides and those on the top as well.
- ✓ Install or Re-install the bag if you had one at the beginning.



Step 7. Surface base installation

See next page, please

Instructions for Part 2 (mounting Surface Base on a surface in the vehicle)**WARNING:**

SURFACE BASE (Part 2) - the surface base must be installed by a professional or is industry certified, on validating installation points on a horizontal surface. To install the surface base, there are 4 drilled holes on the support base where 4 bolts are inserted to secure the surface base to the surface; we recommend using all four attachment points.

NOTE:

PLEASE VERIFY YOUR LOCKING MECHANISM ON THE SURFACE BASE PART PRIOR THE FINAL INSTALLATION ON YOUR SURFACE, IN ORDER TO DETECT ANY MALFUNCTION.



Final installation suggested

MAINTENANCE:

We recommend cleaning the disc under the medical device **after each use**, and the surface base mount as well, after each use. In order to prevent any malfunction or issue, clean carefully the components, at least once a month with a soft cloth, soap and water, to remove any dust or small particles on the mounting bracket. **Do NOT disassemble the mechanism**, if you suspect any malfunction, please contact Technical Support.

If any question, please call your distributor or Technimount System at **+1.581.998.9820** or

email us at: info@technimount.com

www.technimount.com

Thank You