

# **INSTRUCTION GUIDE**

## **FOR**

### **INSTALLATION BRACKET PRO SERIE 30™**

### **MOUNTING SYSTEM FOR MEDICAL DEVICE**

### **INSTALLATION FOR:** **Physio-Control LIFEPAK 12™**

**Version 4.0 English**

## INSTRUCTIONS FOR BRACKET PRO SERIE 30™

### **WARNING:**

*We do our best to manufacture a product with the highest quality control measures possible. However, it is possible to encounter a part that may exhibit sharp edges, please handle with care.*

### **Description:**



This bracket mounting system comes in two parts; Part (1) Bracket - to be installed on the medical device (*PHYSIO-CONTROL LIFEPAK 12™*) and Part (2) Surface Base - to be installed into the vehicle or on a crash cart. These instructions relate to the installation of the medical device bracket. **Part (2), the surface base must be installed by a professional or is industry certified, on validating installation points on a horizontal surface.** To install the surface base, there are 4 drilled holes on the support base where 4 bolts are inserted to secure the surface base to the surface; we recommend using all four attachment points.

### **Contents:**

- 1 X Mounting bracket round swivel (*to be installed under the medical device*) (figure 1)
- 1 X Mounting surface base (support base ) to be installed on a surface in the vehicle or crash cart (figure 2)
- 1 X Screw extension 8-32" x 1-1/4" (figure 3)
- 4 X Screw 8-32 x 1/2" (figure 4)
- 1 X Instruction sheet

**\*\* Mounting hardware for the surface base is NOT provided with your package; installer will have to select the appropriate length and type of bolt and nut combination according to the mounting/attachment points. \*\***

### **Tools required:**

1 x Philips PAN screwdriver (star)- Ex.: Fuller 807;

### **Identification of the product**



Figure 1  
- **Bracket** mounting



Figure 2  
- **Support** base mounting



Figure 3  
- **Screws extension** 8-32" x 3/8"



Figure 4  
- **Screws** 8-32 x 1/2"

**SPECIAL NOTE:**

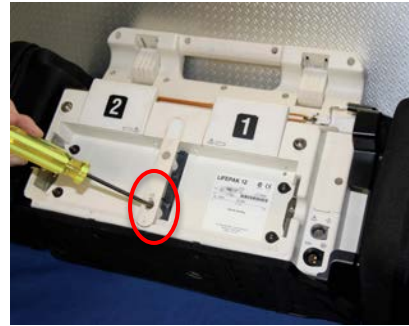
During the installation process, Technimount System recommends the use of Loctite 2400 (Blue) to avoid premature loosening of screws during regular use.



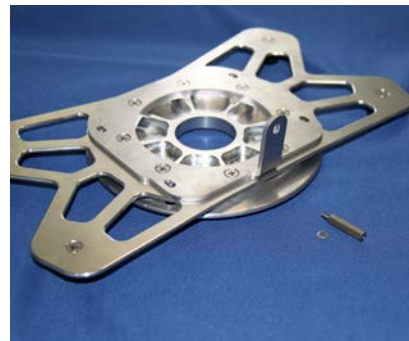
***Instructions for Part 1 (mounting bracket on the medical device)***

**Step 1. Removing the lower screw**

- ✓ Unscrew one lower screw on the back of the device and **keep it aside for a further step.**



**Step 2. Installing the screw with the extension screw**

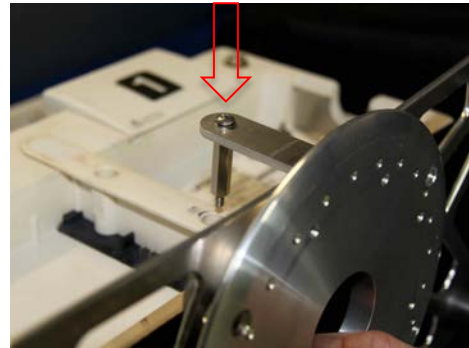
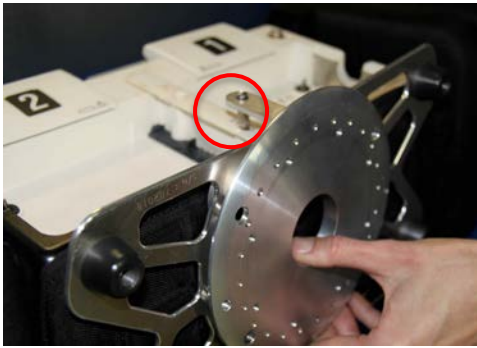


- ✓ Take the bracket device, the extension screw and place it on a table in front of you
- ✓ Reuse the screw that you unscrewed at step 1, from the device.



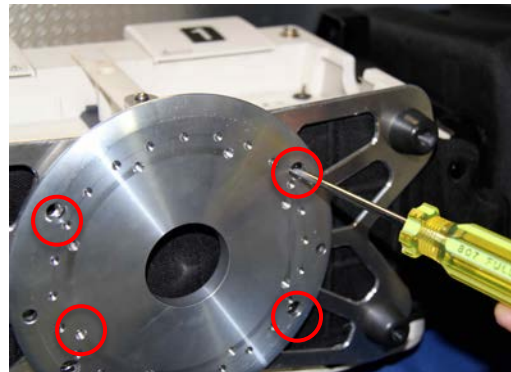
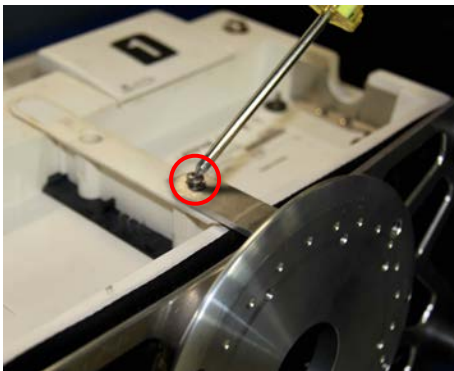
- ✓ Place the screw into the hole on the back plate of the bracket and
- ✓ Install the screw extension onto the screw **and keep it loose for now.**  
*\*\*Screw and screw extension should be tightened softly at this step\*\**

**Step 3.** *Install the bracket under the device*



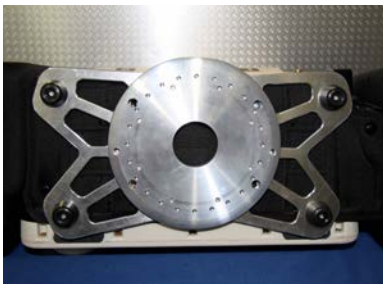
- ✓ Align the holes under the unit, and at the same time align the little arm with the extension screw.
- ✓ Start tightening the screw with the extension screw at the back of the unit and don't tighten all the way, you'll do it at the end.

**Step 4.** *Finalize the installation of the bracket on the device*



- ✓ Align the 4 screws 8-32 x 1/2" with the 4 holes under the device, facing the bottom of the device and screw them in place with the Philips screw driver.

**Step 5.** *Tighten all the 5 screws (Disc and Extension)*



**OPTIONAL**

*Please refer to the owner's manual for any questions related to the device specifically.*

<http://www.physio-control.com/ProductDetails.aspx?id=2147484979>



***Instructions for Part 2 (mounting Surface Base on a surface in the vehicle)*****WARNING:**

**SURFACE BASE (Part 2) - the surface base must be installed by a professional or is industry certified, on validating installation points on a horizontal surface.** To install the surface base, there are 4 drilled holes on the support base where 4 bolts are inserted to secure the surface base to the surface; we recommend using all four attachment points.

**NOTE:**

**PLEASE VERIFY YOUR LOCKING MECHANISM ON THE SURFACE BASE PART PRIOR THE FINAL INSTALLATION ON YOUR SURFACE, IN ORDER TO DETECT ANY MALFUNCTION.**



*Final installation suggested*

**MAINTENANCE:**

We recommend cleaning the disc under the medical device after each use, and the surface base mount as well, after each use. In order to prevent any malfunction or issue, clean carefully the components, at least once a month with a soft cloth, soap and water, to remove any dust or small particles on the mounting bracket. **Do NOT disassembly the mechanism**, if you suspect any malfunction, please contact Technical Support.

If any question, please call your distributor or Technimount System at **+1 581.998.9820** or email us at: [info@technimount.com](mailto:info@technimount.com)

[www.technimount.com](http://www.technimount.com)

Thank You