

# **INSTRUCTION GUIDE**

**FOR**

**INSTALLATION BRACKET PRO SERIE 35™**

**MOUNTING SYSTEM FOR MEDICAL DEVICE**

**INSTALLATION FOR:**  
**PHYSIO-CONTROL LIFEPAK 15™**

**Version 4.0 English**

## **INSTRUCTIONS FOR BRACKET PRO SERIE 35™**

**WARNING:**

*We do our best to manufacture a product with the highest quality control measures possible. However, it is possible to encounter a part that may exhibit sharp edges, please handle with care.*

**Description:**



This bracket mounting system comes in two parts; Part (1) Bracket - to be installed on the medical device (*Physio-Control LIFEPAK 15*); and Part (2) Surface Base - to be installed into the vehicle or on a crash cart. These instructions relate to the installation of the medical device bracket. **Part (2), the surface base must be installed by a professional or is industry certified, on validating installation points on a horizontal surface.** To install the surface base, there are 4 drilled holes on the support base where 4 bolts are inserted to secure the surface base to the surface; we recommend using all four attachment points.

**Contents:**

- 1 X Mounting bracket round swivel (*to be installed under the medical device*) (figure 1)
- 1 X Surface base (support base) to be installed on a surface in the vehicle or crash cart (figure 2)
- 4 X Screw 8-32" x 1/2" Philips (star)- (*under the unit*)
- 3 X Screw 6-32" x 5/8" Philips (star) - (*front of the unit*)
- 2 X Screw 6-32 x 1-1/2" Philips (star) - (*Back of the unit*)
- 1 X Instruction sheet

**\*\* Mounting hardware for the surface base is NOT provided with your package; installer will have to select the appropriate length and type of bolt and nut combination according to the mounting/attachment points. \*\***

**Tools required:**

- 1 x Philips screwdriver (star);
- 1 x Fuller screwdriver Torx T15 (1/4")

**Identification of the product** (*real product might be different than the picture above*)



Figure 1  
- Bracket mounting






Figure 2  
- Support base mounting



Figure 3  
- Screws

**SYMBOLS AND DEFINITIONS**

**SYMBOLS**

	Attention, consult accompanying documents, or special attention
	Safe working load symbol
	Pinch point

 **ATTENTION NOTE :**

During the installation process, Technimount System recommends the use of Loctite 2400 (Blue) to avoid premature loosening of screws during regular use.



*Note: Brand name as Loctite™ is shown as suggestion only, Technimount System and its subsidiaries is not related to this brand and the trademark of Loctite is not registered under Technimount.*

**Additional information:**

You may also have this model of bracket, designed for hospital and / or EMS, instructions for installation are the same, only pictures may be changed.



**OR**



***Instructions for Part 1 (mounting bracket on the medical device)***

**Step 1.** *Remove the batteries* – Please remove batteries to be safe and avoid damage.



- ✓ Simply push on the side and pull it toward you to remove batteries.
- ✓ Removing the batteries will allow you to properly fit the back plate to the device during installation.

**Step 2.** *Remove the bottom screws*



- ✓ Unscrew the four screws under the unit, in order to install the mounting bracket.

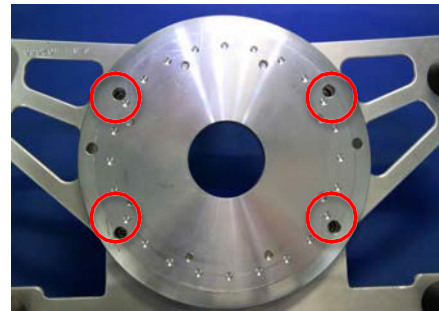
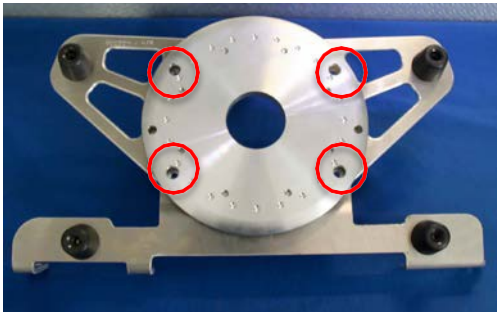
*Please note, they might already be removed from your unit.*

**Step 2A.** *Removing the side screws of the rubber protectors*

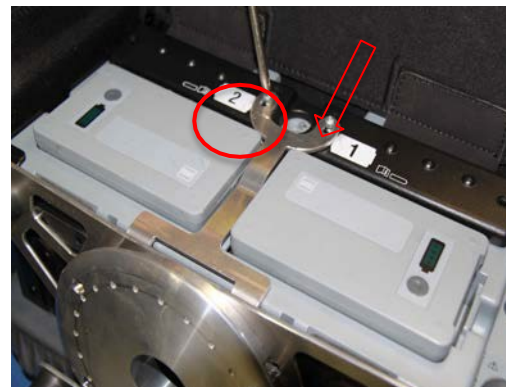
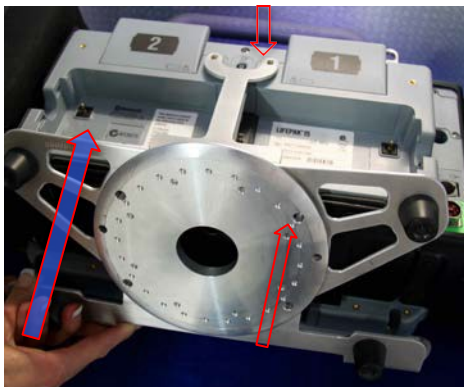
- ✓ Unscrew the three front screws of the protector, on each side of the device with the Torx T15 screw driver.



**Step 3. Install the device mounting bracket**



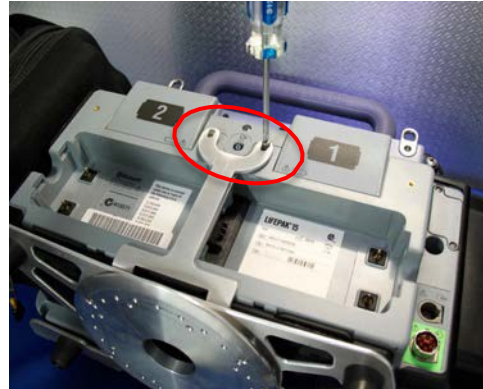
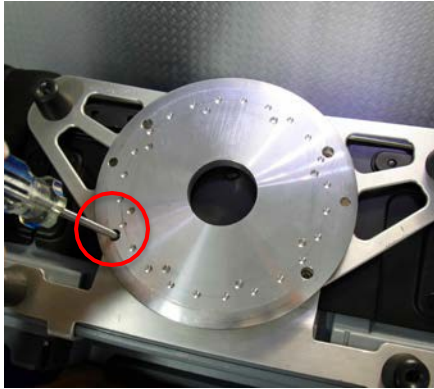
- ✓ Align the 4 screws 8-32 x 1/2" with the 4 holes under the device, facing the bottom of the device and screw them in place with the Philips screw driver.



- ✓ Place the bracket under the unit, align with the back plate, in order to match the 2 holes between the batteries with the holes on the back plate - 2 top screws 6-32" X 1-1/2". (pictures may be different - "Y" shape or straight shape with 2 holes)
- ✓ Screw the screws on the top first, and do not tighten them until you have installed the remaining 4 screws on the device (Disc).
- ✓ If you utilize the back pocket behind the device, you will need to install the plate of the bag under the "Y" or straight shape of the mounting plate; make sure the screws are well aligned with the holes before you start to install them.



**Step 4. Tighten the 4 bottom screws**



- ✓ You need to align the 4 screws 8-32 x 1/2" prior to tighten them, starting with one or two turns to start the thread, so the screws can be seated in the appropriate holes.
- ✓ Once all are aligned with the threads, tighten all 4 screws.
- ✓ Push the back plate against the device and tighten those as well.
- ✓ Review all the screws installed and tighten normally.

**Step 5. Finalizing the front screws**



- ✓ Screw the three front screws 6-32" X 5/8" on each side, in order to properly secure the bracket on the device.
- ✓ Review all the screws installed and tighten normally.

**Step 6. Re-Install the batteries on the device**



- ✓ Re-install the batteries as shown and make sure there is no interference with the back plate of the mounting bracket.
- ✓ You should be able to easily access to the batteries without restriction, if not, please unscrew or loosen the screws at the bottom and the top.
- ✓ Re-align the mounting bracket with the device while pushing the bracket against the device, screw the four screws at the bottom first and then re-align the top 2 screws.



*Final installation suggested on surface base*

***Instructions for Part 2 (mounting Surface Base on a surface in the vehicle)***



**WARNING:**

**SURFACE BASE (Part 2) - the surface base must be installed by a professional or is industry certified, on validating installation points on a horizontal surface.** To install the surface base, there are 4 drilled holes on the support base where 4 bolts are inserted to secure the surface base to the surface; we recommend using all four attachment points.

**NOTE:**

**PLEASE VERIFY YOUR LOCKING MECHANISM ON THE SURFACE BASE PART PRIOR THE FINAL INSTALLATION ON YOUR SURFACE, IN ORDER TO DETECT ANY MALFUNCTION.**



*Final installation suggested*

**MAINTENANCE:**

We recommend cleaning the disc under the medical device after each use, and the surface base mount as well, after each use. In order to prevent any malfunction or issue, clean carefully the components, at least once a month with a soft cloth, soap and water, to remove any dust or small particles on the mounting bracket. **Do NOT disassembly the mechanism**, if you suspect any malfunction, please contact Technical Support.

If you have any question, please call your distributor or Technimount System at +1.581.998.9820 or email us at: [info@technimount.com](mailto:info@technimount.com) or [techsupport@technimount.com](mailto:techsupport@technimount.com) <https://www.technimount.com/contact-us/> ; for more details go on [www.technimount.com](http://www.technimount.com)

Thank You