

INSTRUCTION GUIDE

FOR

INSTALLATION BRACKET PRO SERIE 40

MOUNTING SYSTEM FOR MEDICAL DEVICE

INSTALLATION FOR:

PHILIPS MR_xTM -

WITH or WITHOUT CARRY CASE BAG -

Version 4.0

INSTRUCTIONS FOR BRACKET PRO SERIE 40™

WARNING:

We do our best to manufacture a product with the highest quality control measures possible. However, it is possible to encounter a part that may exhibit sharp edges, please handle with care.

Description:



This bracket mounting system comes in two parts; Part (1) Bracket - to be installed on the medical device (*PHILIPS MRx*); and Part (2) Surface Base - to be installed into the vehicle or on a crash cart. These instructions relate to the installation of the medical device bracket. **Part (2), the surface base must be installed by a professional or is industry certified, on validating installation points on a horizontal surface.** To install the surface base, there are 4 drilled holes on the support base where 4 bolts are inserted to secure the surface base to the surface; we recommend using all four attachment points.

Contents:

- 1 X Mounting Bracket with round disc (*to be installed on the medical device*) (*figure 1*)
- 1 X Surface Base (support base) to be installed on a surface in the vehicle or crash cart (*figure 2*)
- 1 X Instruction sheet

**** Mounting hardware for the surface base is NOT provided with your package; installer will have to select the appropriate length and type of bolt and nut combination according to the mounting/attachment points. ****

Tools required:

- 1 x Philips screwdriver (star)
- 1 x Fuller screwdriver Torx T15 (1/4")

Identification of the product



Figure 1: Support mount – **Device** section






Figure 2: Support mount – **Surface** base section

Note: Illustrations may be not the same, depending hospital or EMS model.

SYMBOLS AND DEFINITIONS

SYMBOLS

	<p>Attention, consult accompanying documents, or special attention</p>
	<p>Safe working load symbol</p>
	<p>Pinch point</p>



ATTENTION NOTE :

During the installation process, Technimount System recommends the use of Loctite 2400 (Blue) to avoid premature loosening of screws during regular use.



Note: Brand name as Loctite tm is shown as suggestion only, Technimount System and its subsidiaries is not related to this brand and the trademark of Loctite is not registered under Technimount.

Instructions for Part 1 (mounting bracket on the medical device)

Step 1. *Partially remove storage bags* – Remove upper section of the bag to install the mount.



- ✓ Simply remove the top straps, front and rear.
- ✓ Inspect the entire strap system to make sure nothing is attached to the device.



- ✓ Detach the plastic clips at the back and remove the back pouch.

Step 2. *Remove rear bracket holder* – Remove the bracket to install the roll cage over device.



- ✓ Unscrew the two rear screws of the device holder bracket with the Torx T15 screwdriver and place it aside. You'll need them later in the installation.

Step 3. Prepare the roll cage for the medical device – OPTIONAL STEP: Check to see if the mounting bracket is completely assembled (base feet with disc and roll cage). If not, proceed to the next step.

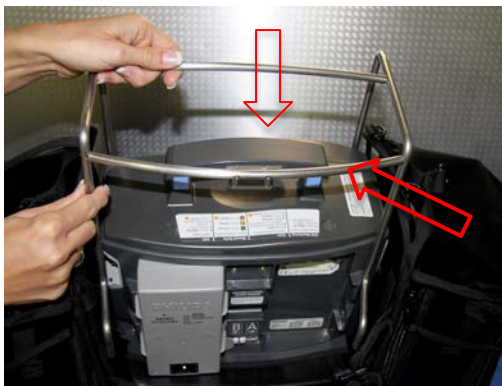


Important - Optional step

If the feet with disc and the roll cage are installed together; you'll have to remove the bottom part from the roll cage by unscrewing the 4 screws on each corner – keep the screws so they can be re-installing at a later time.

- ✓ Unscrew the 4 screws No. 12-24 x 3/4" (x-head Philips) with the Philips screwdriver located at the base with feet and disc, from the roll cage, and place the base and 4 screws aside for now, they will be used later in the installation process.

Step 4. Install the roll cage on the device – Placing the roll cage over on the device.



- ✓ Place the roll cage over from the top of the device and aligning the rear curve bar at the rear of the device.
- ✓ Install the bracket on the unit, aligned the screw holes of the back plate with the upper 2 holes at the back of the unit.

Step 5. Tighten the 2 screws – Secure the bracket on the device



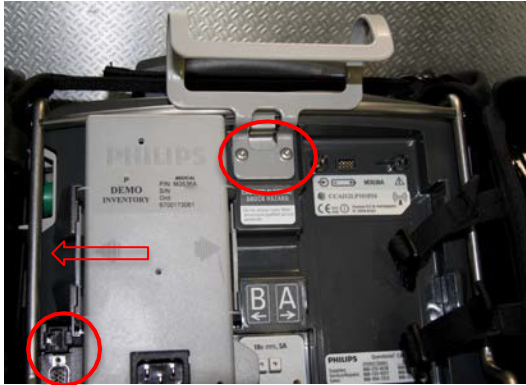
- ✓ You need to align the 2 holes with the plate, prior to tighten all, and properly place the bracket over the device.
- ✓ Once everything is aligned with the threads, re-install the rear device holder bracket with the screws (*ref. step 2*) and then screw the screws in place tightly.
- ✓

Step 6. Attaching the bottom screws – Install the base under the metal rods of the roll cage



- ✓ Screw the 4 screws 12-24 x 3/4" (x-head Philips) with the Philips screwdriver at the base, with feet and disc, **over the bottom of the bag**, and to the Bracket.
- ✓ Review all the screws installed and tighten normally.

Step 8. *Install the bag on the device – Complete the installation*



- ✓ Inspect the mounting bracket rods behind the device, ensuring clearance with the connectors; if the rear plate is correctly installed, it should be fine.
- ✓ Re-install the bag as shown and make sure everything is correctly placed and secure.

For any question related to the medical device please visit:

<http://www.usa.philips.com/healthcare/solutions/emergency-care-resuscitation/defibrillator-monitor>

Instructions for Part 2 (mounting Surface Base on a surface in the vehicle)**WARNING:**

SURFACE BASE (Part 2) - the surface base must be installed by a professional or is industry certified, on validating installation points on a horizontal surface. To install the surface base, there are 4 drilled holes on the support base where 4 bolts are inserted to secure the surface base to the surface; we recommend using all four attachment points.

NOTE:

PLEASE VERIFY YOUR LOCKING MECHANISM ON THE SURFACE BASE IS FUNCTIONING CORRECTLY, PRIOR TO INSERTING THE BRACKET WITH THE MEDICAL DEVICE.

*Final installation***MAINTENANCE:**

We recommend cleaning the disc under the medical device and the surface base mount after each use. In order to prevent any malfunction or issue, clean the components carefully, at least once a month with a soft cloth, soap and water, to remove any dust or small particles on the mounting bracket. **Do NOT disassembly the locking mechanism.** If you suspect any malfunction, please contact Technical Support.

If any questions, please call your Distributor or Technimount System at +1 581.998.9820 or email us at: info@technimount.com or techsupport@technimount.com

For more details about our products, please visit: www.technimount.com

Thank You