

Arm Adapter Flex™ System

Mounting adapter for GCX® Arms

Characteristics

- Lightweight
- Compact size
- Quick Release and re-attachment
- Safe and Easy
- Immediate access
- Match with Bracket Pro series mount system from us

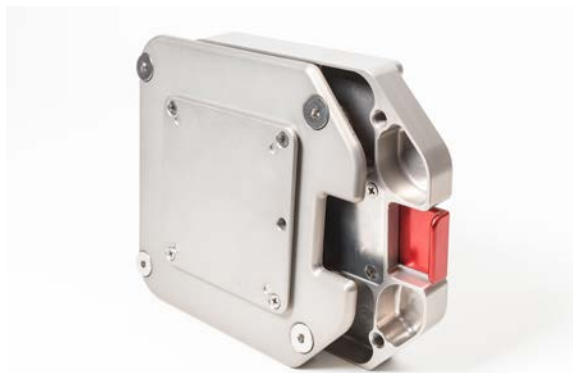
Application of use

- ER Wall installation
- Arm extension
- Intensive care
- Arm supports as GCX mounts and similar

Advantages

- Minimum space for installation
- Latex free
- Biological-fluid and sodium-solution resistant
- Rust-resistant
- 1 year full warranty

Any medical equipment that has been inadequately installed in ambulances, other emergency medical service (EMS) vehicles or crash carts, can potentially pose a serious risk or become dangerous in the event that the vehicle makes frequent or sudden stops, turns or rushed departures. This situation can result in damaged expensive medical equipment or even inflict injuries on a patient, ambulance personnel or clinic staff.



The Arm Adapter Flex™ is designed to adapt the GCX® Arm mounting system to the Technimount System's Bracket Pro Serie™ mounting solutions. By adding an Arm Adapter Flex™ on the arm, a Standard or Extended Surface Base can be installed and can secure all kinds of medical devices.

The features of this support are the very small size and weight, but mainly the flexibility between the various medical device brands. No modification is needed on the arm and all of its features including the arm rotation and the easy access to the medical device.

The system has been tested to meet the manufacturer's requirements and provide at all times safety and security in the hospital environment. The installation of this adapter on the Standard or Extended Surface Base is very easy and time effective.

About Us

Technimount System creates mounts and brackets for portable medical devices such as defibrillators, ventilators, and pumps, that adapt to different brands of medical equipment for OEM ambulance manufacturers, EMS users, and hospitals.

For use with Technimount « [Bracket Pro Serie™](#) »

TECHNICAL SPECIFICATIONS

Product name:	Arm Adapter Flex™
Compatibility model:	Bracket Pro Serie™ 20, 25, 30, 35, 40, 45 and 50
Environment of use:	Hospital – Clinic – BioMed Dept. - Military hospital -
Material:	Base: Aluminum high density w/ anodization process
Temperature of use:	- 35° C @ 45° C (Direct conduction)
Impact Resistance¹:	Drop test 1.5 M according to the Bracket Pro Serie mount resistance
Nbr of installation point:	6 points on surface base and 4 points on adapter
Dimensions: Plate adapter: Support:	4-5/8" Length X 4-13/16" Width X 1/4" Thickness (inch.) 7-1/2" Width X 11" Depth X 5/16" Thickness (inch.)
Rotation:	360° degrees with locking system on the arm support with Standard or Extended Surface Base
Weight:	Support Assy: 1.55 lbs. – 703 g Support Assy Standard version: 1.39 lbs – 589 g
Options:	Standard or Extended Surface Base GCX® Mounting Solutions (Arms)
Part number²:	601-00-WMA-GCX Adapter GCX arm with Extended base 602-00-WMA-GCX Adapter GCX arm with Standard base



Installation suggested

¹ *Technimount System* works to meet and exceed all legal requirements in the deployment system for EMS vehicles, according to the Provincial & Federal Government regulations. It may not meet your local requirements, please contact your administrator.

² Part number must be confirmed prior sending purchase order. Technimount System reserves the right to make changes on the product, documents and technical specifications without notice and responsibilities. DOCUMENTS PRINTED IN CANADA
CGC Technologies – Division of Medical equipment & accessories – Registered brand 2013