



**Technimount System**  
445, Papin St. – Office 103  
Quebec City (Quebec), Canada  
G1P 3T8  
Telephone : +1-581-998-9820  
Fax : 1-855-339-6351

[info@technimount.com](mailto:info@technimount.com)    [www.technimount.com](http://www.technimount.com)

# **INSTRUCTION GUIDE**

**FOR**

**INSTALLATION BRACKET PRO SERIE 30™**

**MOUNTING SYSTEM FOR MEDICAL DEVICE**

**INSTALLATION FOR:**  
**Physio-Control LIFEPAK 12™**

**Version 3.0 English**

## INSTRUCTIONS FOR BRACKET PRO SERIE 30™

### WARNING:

*We do our best to manufacture a product with high quality. However, it may happen that some section on the parts can be very cutting and sharp, please handle with care.*

### Description:



This bracket mounting system comes in two sections; one section (part 1) to be installed on the medical device (*PHYSIO-CONTROL LIFEPAK 12™*); and the second section (part 2) to be installed into the vehicle or on crash cart. This instruction concerns the installation on the bracket mounting on the device only. **The second part, the support base mounting (part 2) must be installed by a professional, on certified anchoring points** on a horizontal surface. To fix it, 4 points of insertion of bolt must be used; we recommend using those four points.

### Contents:

- 1 X Bracket mounting round swivel (*to be installed under the medical device*) (figure 1)
- 1 X Support mounting (base plate) to be installed on a surface in the vehicle or crash cart (figure 2)
- 1 X Screw extension 8-32" x 1-1/4" (figure 3)
- 4 X Screw 8-32 x 1/2" (figure 4)
- 1 X Instruction sheet

**\*\* Screws for support base mounting are NOT provided with your package; installer will choose the appropriate screw, or bolt and nut according to the anchoring points. \*\***

### Tools required:

- 1 x Philips PAN screwdriver (star)- Ex.: Fuller 807;

### Identification of the product



Figure 1  
- Bracket mounting



Figure 2  
- Support base mounting



Figure 3  
- Screws extension 8-32" x 3/8"

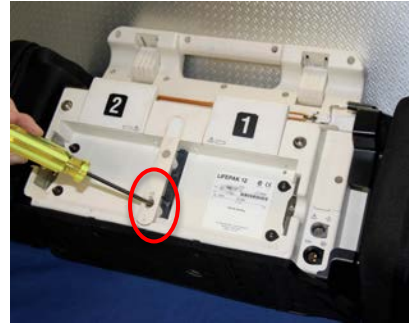


Figure 4  
- Screws 8-32 x 1/2"

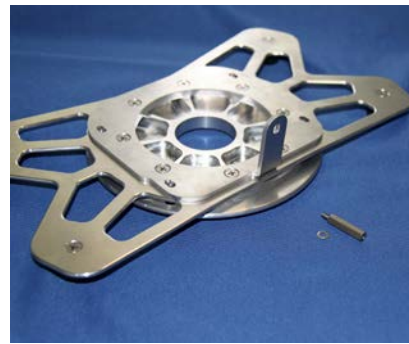
***Instructions for part one (bracket mounting on the medical device)***

**Step 1. (Removing the lower screw)**

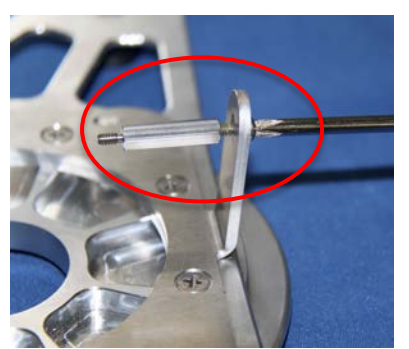
- ✓ Unscrew one lower screw on the back of the device, and **keep it for a further step.**



**Step 2. (Installing the screw with the extension screw)**

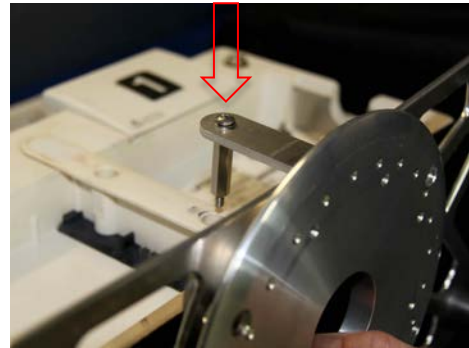
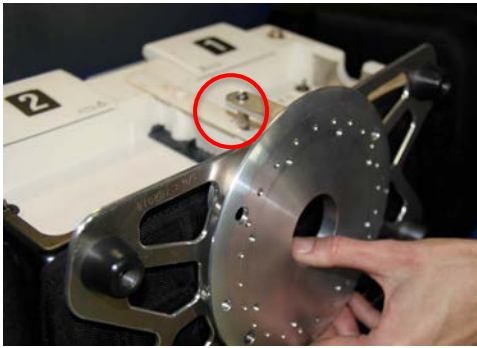


- ✓ Take the bracket device, the extension screw and place it on a table in front of you
- ✓ Reuse the screw that you unscrewed at step 1, from the device.



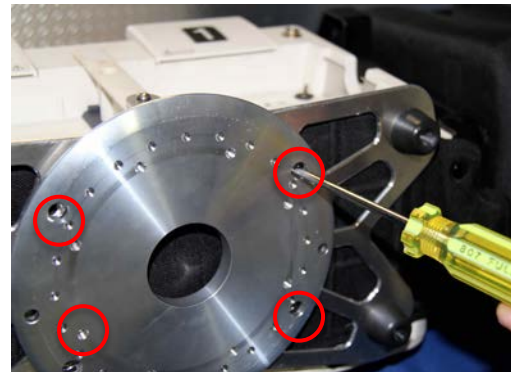
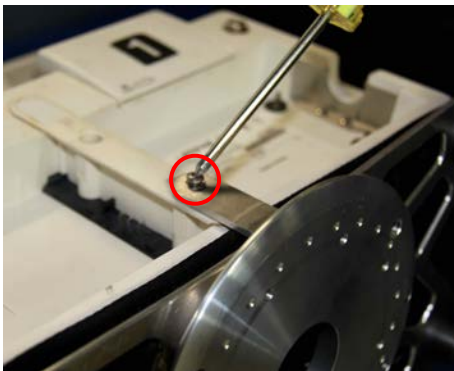
- ✓ Place the screw into the hold on the back plate of the bracket and
- ✓ Install the screw extension with the screw **and keep it loose for now.**  
***\*\*Screw and screw extension should be tight softly at this step\*\****

**Step 3.** *(Install the bracket under the device)*



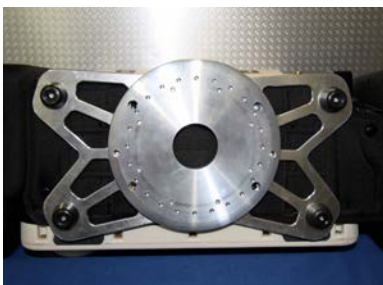
- ✓ Align the holds under the unit, and at the same time the little arm with the extension screw.
- ✓ Start to tight the screw with the extension screw at the back of the unit and don't tight it too much, you'll do it at the end.

**Step 4.** *(Finalize the installation of the bracket on the device)*



- ✓ Align the 4 screws 8-32 x 1/2" with the 4 hold under the device, facing bottom device and screw them in place with the screwdriver Philips.

**Step 5.** *(Tighten the all the 5 screws)*



– **OPTIONAL**

*Please refer to the owner's manual for any questions related to the device specifically.*

<http://www.physio-control.com/ProductDetails.aspx?id=2147484979>



***Instructions for part two (Support mounting on a surface in the vehicle)***

**WARNING:**

The second part, the support base mounting (figure 2, page 1) must be installed by a professional recognized in the industry, on certified anchoring points on a horizontal surface. In order to fix it, 4 points of insertion of bolt must be used; we recommend using those four points.

**NOTE:**

**PLEASE VERIFY YOUR LOCKING MECHANISM ON THE BASE PART PRIOR THE FINAL INSTALLATION ON YOUR SURFACE, IN ORDER TO DETECT ANY MALFUNCTION.**



*Final installation suggested*

**MAINTENANCE:**

We recommend cleaning the disc under the medical device after each use, and the surface base mount as well, after each use. In order to prevent any malfunction or issue, clean carefully the components, at least once a month with a soft soap and linen, to remove any dust or small particles on the mounting bracket. **Do NOT disassembly the mechanism**, if you suspect any malfunction, please contact us.

If any question, please call your distributor or Technimount System at +1.581.998.9820 or email us at: [techsupport@technimount.com](mailto:techsupport@technimount.com)

[www.technimount.com](http://www.technimount.com)

Thank you!