



Technimount System

445, Papin St. – Office 103
Quebec City (Quebec), Canada
G1P 3T8
Telephone: +1-581-998-9820
Fax: 1-855-339-6351

info@technimount.com

www.technimount.com

INSTRUCTION GUIDE

FOR

INSTALLATION BRACKET PRO SERIE 60™

MOUNTING SYSTEM FOR MEDICAL DEVICE

INSTALLATION FOR HAMILTON T-1™

Version 3.3 English

INSTALLATION INSTRUCTIONS FOR BRACKET PRO SERIE 60™

WARNING:

We do our best to manufacture a product with the highest quality control measures possible. However, it is possible to encounter a part that may exhibit sharp edges, please handle with care.

Description:



This bracket mounting system comes in two parts; Part (1) Bracket - to be installed on the medical device (*Hamilton T1*) and Part (2) Surface Base - to be installed into the vehicle or on a crash cart. These instructions relate to the installation of the medical device bracket. **Part (2), the surface base must be installed by a professional or is industry certified, on validating installation points on a horizontal surface.** To install the surface base, there are 4 drilled holes on the support base where 4 bolts are inserted to secure the surface base to the surface; we recommend using all four attachment points.

Contents:

- 1 X Mounting Bracket mounting round swivel (*to be installed under the medical device*) (figure 1)
- 1 X Mounting Surface base (surface base) to be installed on a surface in the vehicle (figure 2)
- 4 X Screw 6-32" x 5/8" Philips (star) – (*Back of the unit*)
- 2 X Black round support-spacer (*Back the unit*)
- 1 X Black round spacer – (*Back of the unit*)
- 1 X Instruction sheet

**** Mounting hardware for the surface base is NOT provided with your package; installer will have to select the appropriate length and type of bolt and nut combination according to the mounting/attachment points. ****

Tools required:

- 1 x Philips screwdriver (star);
- 1 x Fuller screwdriver Torx T15 (1/4")

Identification of the product (*real product might be different than the picture above*)



Figure 1
- Bracket mounting






Figure 2
- Support base mounting



Figure 3
- Screws

SYMBOLS

	<p>Attention, consult accompanying documents, or special attention</p>
	<p>Safe working load symbol</p>
	<p>Pinch point</p>



ATTENTION NOTE :

During the installation process, Technimount System recommends the use of Loctite 2400 (Blue) to avoid premature loosening of screws during regular use.



Note: Brand name as Loctite™ is shown as suggestion only, Technimount System and its subsidiaries is not related to this brand and the trademark of Loctite is not registered under Technimount.

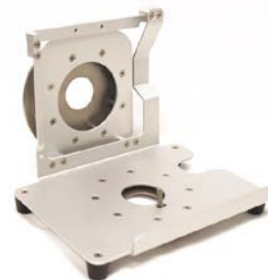
Additional information:

You may also have this model of bracket, designed for hospital and / or EMS, instructions for installation are the same, only pictures may be changed.



700-10-HM

OR



700-10-HMHB

Instructions for Part 1 (mounting bracket on the medical device)

Step 1. *Preparing the mounting bracket* – Remove any obstacle under the device



- ✓ Place the unit in position to have access to the bottom of the device.
- ✓ Make sure you can get access to the main threaded hole and ensure the main screw is removed prior to installing the mounting bracket.

Step 2. *Installation for the mounting bracket*



- ✓ Remove the two (2) Torx screws located at the bottom of the device, one on the left side and one on the right side, with the Torx screwdriver. Keep them if you decide to remove the mounting bracket at a later time.
- ✓ The two (2) Torx screws that were removed will be replaced with similar screws with the same thread pattern but are longer in size to accommodate the new bracket.



- ✓ Repeat the same step as in the point one, removing two (2) screws located at the top rear of the device. Again, keep the removed screws if you decide to remove the mounting bracket at a later time.

Step 3. Securing the device mounting bracket



- ✓ Once the screws have been removed, place the two (2) black inserts into the holes located on each side, of the bottom of the device.

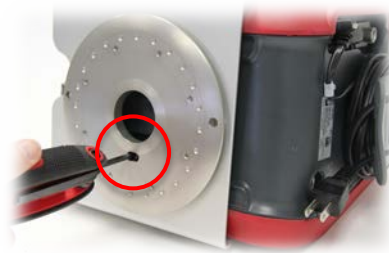


- ✓ Once the inserts are in place, install the mount bracket next, ensuring the bracket holes are aligned with the device holes.
- ✓ Make sure you add a drop of Loctite on the screw prior to installation.

Step 4. Installing the main retaining bolt



- ✓ Align the main retaining bolt to the threaded hole located on the bottom of the device. Important to secure the retaining bolt to the device so the mounting bracket is properly secured.
- ✓ Once correctly positioned, screw the bolt with the big black insert on it, but not too tight, so that final adjustment can be made to the other securing screws.



- ✓ Simply install the mount in front of the unit and align the thread hole with the bolt from the mount.

Step 5. Finishing the installation process



- ✓ Ensure alignment of all remaining screws prior to tightening them down, starting with one or two turns at the start, ensuring threads are lined up.
- ✓ Make sure you add a drop of Loctite on each screw prior to installation.
- ✓ Once all are aligned with the threads, slowly hand tighten screws.
- ✓ Review all the screws installed, ensuring they are secure.

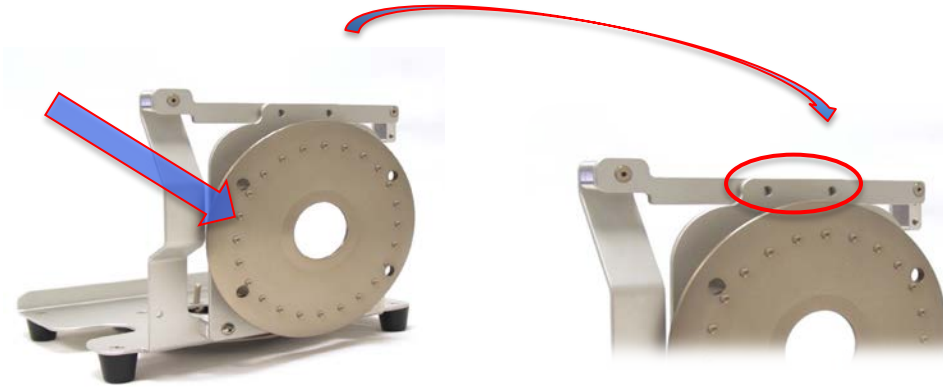


Note: The installation shows rear access without the rear vertical disc.

OPTIONAL FEATURE ON YOUR MOUNTUNG BRACKET

VERTICAL BACK DISC FOR WALL MOUNT INSTALLATION

Part no. ref.: 700-10-HMHB



NOTE:

Your Bracket Pro Serie 60 may or may not include the vertical disc for wall installation. If so, the installation is exactly the same. **For the two (2) top screws**, you will need to install the screws thru the two (2) holes at the top of the mounting bracket, as recommended and secured as per installation procedures above.



Final installation with Surface Base

Instructions for Part 2 (mounting Surface Base on a surface in the vehicle)**WARNING:**

SURFACE BASE (Part 2) - the surface base must be installed by a professional or is industry certified, on validating installation points on a horizontal surface. To install the surface base, there are 4 drilled holes on the support base where 4 bolts are inserted to secure the surface base to the surface; we recommend using all four attachment points.

NOTE:

PLEASE VERIFY YOUR LOCKING MECHANISM ON THE SURFACE BASE PART PRIOR THE FINAL INSTALLATION ON YOUR SURFACE, IN ORDER TO DETECT ANY MALFUNCTION.



Final installation

MAINTENANCE:

We recommend cleaning the disc under the medical device after each use, and the surface base mount as well, after each use. In order to prevent any malfunction or issue, clean carefully the components, at least once a month with a soft cloth, soap and water, to remove any dust or small particles on the mounting bracket. **Do NOT disassembly the mechanism,** if you suspect any malfunction, please contact Technical Support.

If you have any question, please call your distributor or Technimount System at +1.581.998.9820 or email us at: techsupport@technimount.com

www.technimount.com.

Thank you!