



# TECHNIMOUNT SYSTEM™



## BRACKET PRO SERIE® 75

MOUNTING SYSTEM FOR THE PHILIPS TEMPUS LS

### SAFETY & FLEXIBILITY WHERE IT MATTERS MOST

The Bracket Pro Serie® 75 is designed for air and ground EMS transport of the Philips Tempus LS.

Highly flexible, the Bracket Pro Serie® 75 can be used in multiple applications including surface, floor, cot/stretcher and wall systems.



Ambulance



Stretcher



Military



Air

At Technimount, we understand that EMS Providers need solutions that they can rely on. We design and develop quality mounting systems which are safe and flexible, allowing you to concentrate on what matters most - patient care.

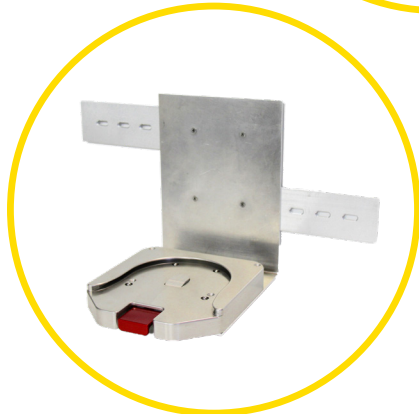
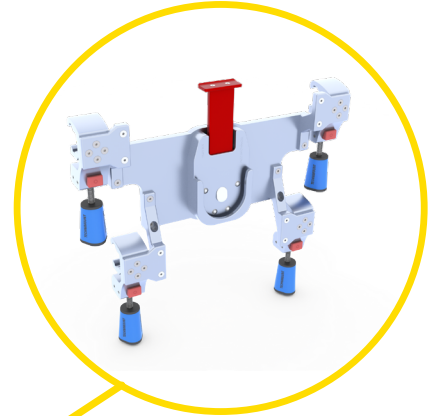
# BRACKET PRO SERIE® 75

## POTENTIAL CONFIGURATIONS

Safety MD Transporter



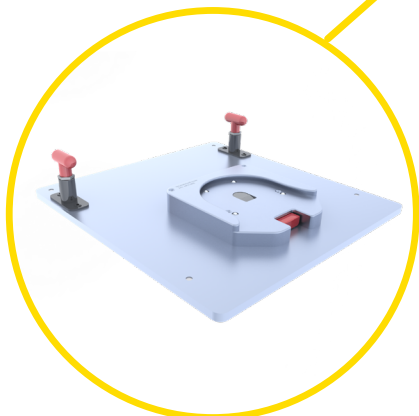
Wall Mount System (EU)



Wall Mount System (NA)



Stretcher Safety Arm System



Floor Mount Air Ambulance

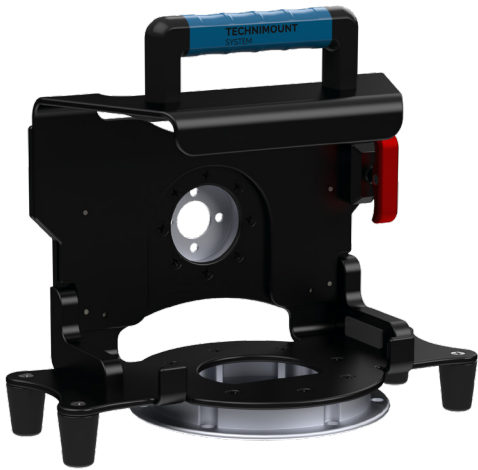


Universal Standard Surface Base

# TECHNICAL SPECIFICATIONS

<b>Product Name (Bracket)</b>	Bracket Pro Serie® 75
<b>Compatibility of Medical Device</b>	Philips Tempus LS
<b>Environment of Usage</b>	EMS - Military
<b>Device Section Material</b>	High-Density Aluminum - Polyurethane - Acetal Feet
<b>Bottom Disc Section Material</b>	Aluminum with Stainless Steel Insert and Peek Cushions
<b>Temperature of Usage</b>	- 35° C @ 45° C (Direct Conduction)
<b>Impact Resistance - Ground - USA</b>	SAE J3043 - (30 G) Plus 10% Safety Factor (in process)
<b>Impact Resistance - Flight</b>	FAA - FAR -DOT 27.561 & DOT 27.562 up to 20G (in process)
<b>Installation</b>	Locking Mechanism without Screws
<b>Attachment Options</b>	2 Locking Discs - Standard Bottom Section - Anti-Rotation Back Micro Disc
<b>Transportation Compatibility System</b>	Compatible with Technimount's: <ul style="list-style-type: none"><li>• Universal Standard Surface Base</li><li>• Stretcher Safety Arm System (For Stryker Cots (PowerPro - XT and Mx-Pro)</li><li>• Floor Mount Platform (Flight)</li><li>• Wall Mount System (Micro Base System)</li><li>• Safety MD Transporter</li></ul>
<b>Options</b>	Bracket Pro Serie® 75 - SMT for the Tempus LS with Smart Mount
<b>Features</b>	<ul style="list-style-type: none"><li>• Access to all Connectors and Accessories</li><li>• No Screws Attached to the Medical Device</li><li>• Red Quick Release to Easily Insert and Remove the Medical Device</li></ul>
<b>Physical Overall Dimensions</b>	Bracket Pro Serie® 75 <ul style="list-style-type: none"><li>• Length 6.79 in., Width 11.6 in., Height 10.25 in.</li></ul> Bracket Pro Serie® 75 - SMT <ul style="list-style-type: none"><li>• Length 7.0 in., Width 11.6 in., Height 11.3 in.</li></ul>
<b>Weight</b>	Bracket Pro Serie® 75 <ul style="list-style-type: none"><li>• Bracket Only - 4.85 lbs</li><li>• Bracket with the Medical Device - 9.25 lbs</li></ul> Bracket Pro Serie® 75 - SMT <ul style="list-style-type: none"><li>• Bracket Only - 5.1 lbs</li><li>• Bracket with the Medical Device and Smart Mount - 11.3 lbs</li></ul>
<b>Part Numbers</b>	<ul style="list-style-type: none"><li>• Bracket Pro Serie® 75 - 321-10-LS-RDT</li><li>• Bracket Pro Serie® 75 - SMT - 321-10-LS-RDT-SMT</li><li>• Standard Surface Base - 100-20-UN</li></ul>

# YOUR SAFETY IS OUR PRIORITY



## FEATURES

- ✓ Bracket respects access to medical device components and features
- ✓ Red Quick Release Mechanism located on the right side of the bracket
- ✓ Bracket secures the medical device without screws
- ✓ Anti-rotation back disc and universal standard bottom disc for support on various Technimount arm and wall systems
- ✓ Made from high-density aluminum with black-anodized finish with polyurethane plastic transport handle
- ✓ Design complies with SAE J3043, FAA-FAR-DOT 27.561 and DOT 27.562 (in process)

## BENEFITS

- + Flexible for use in different applications (surface, floor, cot/stretcher, and wall systems) as well as in other EMS environments
- + No interference with the medical device components, connectors and wires
- + Easily install and remove the medical device and its Smart Mount from the mounting system
- + Access to medical device from all angles (360° rotation on Technimount's Standard Surface Base)
- + Resistant to biological fluids and Quaternary-type disinfectants for easy cleaning
- + Reduces the risk of damage to the equipment and ensures the safety of patients and crews during air and ground transport



Bracket Pro Serie® 75 - SMT for the Tempus LS with Smart Mount

## SAFETY AND FLEXIBILITY WHERE IT MATTERS MOST

[technimount.com](http://technimount.com)

