



TECHNIMOUNT SYSTEM™



BRACKET PRO SERIE® 121-GR

MOUNTING SYSTEM FOR GROUND TRANSPORT
OF THE BAXTER SPECTRUM IQ INFUSION PUMPS

SAFETY & FLEXIBILITY WHERE IT MATTERS MOST

The Bracket Pro Serie® 121-GR is for ground EMS and Critical Care Transport of 3 Baxter Spectrum IQ Infusion pumps on stretchers/cots and walls.

The Bracket Pro Serie 121-GR is designed to comply with the highest industry safety standards for transport of medical equipment, SAE J3043.



Ambulance



Stretcher



Military



Air

At Technimount, we understand that EMS Providers need solutions that they can rely on. We design and develop quality mounting systems which are safe and flexible, allowing you to concentrate on what matters most - patient care.

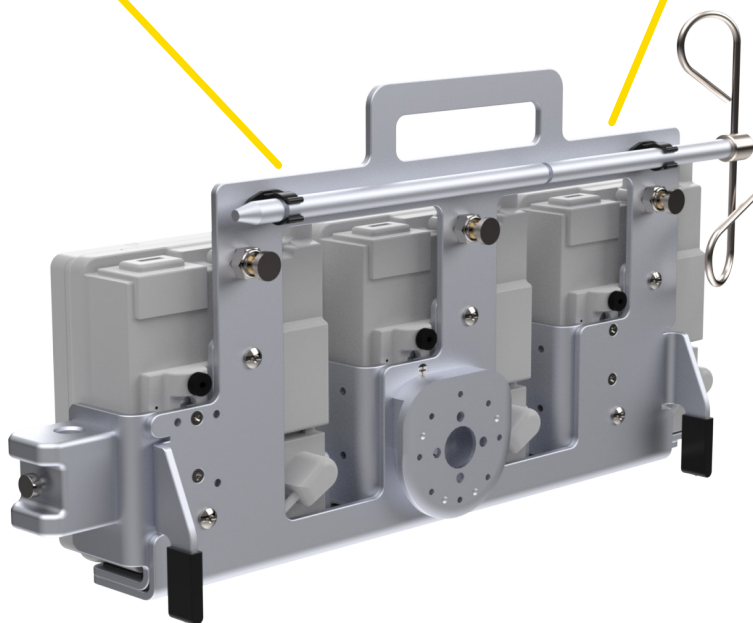
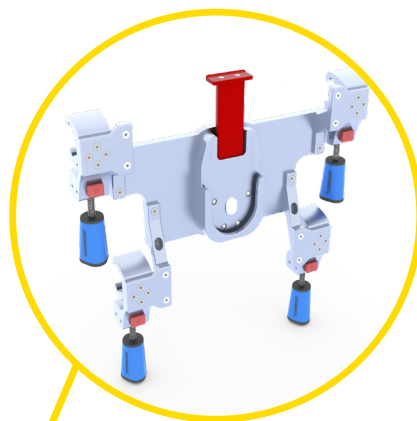
BRACKET PRO SERIE® 121-GR

POTENTIAL CONFIGURATIONS

Safety MD Transporter



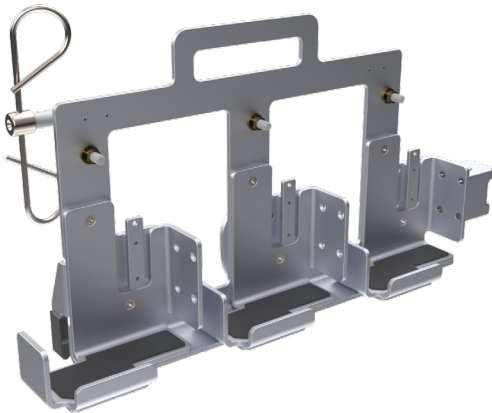
Wall Mount System (EU)



TECHNICAL SPECIFICATIONS

Product Name	Bracket Pro Serie® 121-GR
Compatibility of Medical Device	Baxter Spectrum IQ Infusion Pumps
Environment of Usage	EMS/CCT (Ground) – Hospital/Clinic, Military
Device Section Material	High-Density Aluminum with Silver-Anodized Finish
Anti-Rotation Back Disc Material	High-Density Aluminum with Silver-Anodized Finish
Temperature of Usage	- 35° C @ 45° C (Direct Conduction)
Impact Resistance – Ground	SAE J3043 (30 G) Plus 10% Safety Factor (in process)
Installation	Device retained on main assembly with Quick Release Mechanism
Attachment Options	Anti-Rotation Micro Disc
Transportation Compatibility System	Compatible with Technimount's: <ul style="list-style-type: none">• Safety MD Transporter• Wall Mount Systems
Features	<ul style="list-style-type: none">• Robust Mounting Solution for EMS/CCT/ALS Transport• Access to all Connectors and Accessories• Ground Compatibility (Flight compatible Models Available)• Multiple Configuration Options for Transport• Quick Release Mechanism to Easily Insert and Remove the Pumps
Physical Overall Dimensions	<ul style="list-style-type: none">• Height 10.64 in., Width 20.30 in., Depth 4.50 in., Height with IV Pole 17.89 in.
Weight	<ul style="list-style-type: none">• Bracket - 5.72 lbs• Bracket with 3 Baxter Spectrum IQ Infusion Pumps -17.72 lbs
Part Number	<ul style="list-style-type: none">• Bracket Pro Serie 121-GR - 1520-10-BXIQ-GR3• Micro Base - 120-20-UN

YOUR SAFETY IS OUR PRIORITY



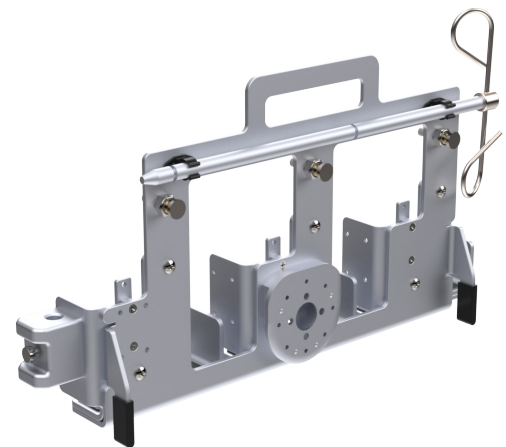
FEATURES

- ✓ Designed to secure 3 Baxter Spectrum IQ Infusion Pumps during Ground EMS/Critical Care Transport
- ✓ Medical device retained on main assembly with proprietary locking mechanism on each shelf
- ✓ Quick Release Mechanism to instantly remove the pump from the bracket
- ✓ Anti-Rotation Micro Disc to support multiple mounting configurations on stretcher/cots and wall systems
- ✓ IV Pole with Quick Release Mechanism for use during temporary transfer from bed to stretcher
- ✓ High-density aluminum with silver-anodized finish
- ✓ Designed to comply with SAE J3043 (certification in process)

BENEFITS

- + Increases flexibility in EMS/CCT practices with multiple configuration options available (stretcher/cot and wall systems)
- + Easily install and remove the medical device from the bracket for maintenance
- + No interference with the medical device components, cables and tubing
- + Access to medical device from all angles (360° rotation on the Safety MD Transporter with Vertical Micro Base)
- + Quickly install the IV Pole during temporary transfer from bed to stretcher and store directly on the bracket when not in use
- + Certified mounting system that complies with the highest industry standards and regulations
- + Reduces risks of damage to the equipment and ensures the safety of patients and crew during EMS and Critical Care transport

SAFETY AND FLEXIBILITY WHERE IT MATTERS MOST



technimount.com

