



# TECHNIMOUNT SYSTEM™



## BRACKET PRO SERIE® 76

MOUNTING SYSTEM FOR THE PHILIPS TEMPUS PRO

### SAFETY & FLEXIBILITY WHERE IT MATTERS MOST

The Bracket Pro Serie® 76 is the only universal mounting system to secure the Philips Tempus Pro in different applications including surface, floor, cot/stretcher and wall systems.

The Bracket Pro Serie® 76 is lightweight and robust solution tested for EMS and military environments.



Ambulance



Stretcher



Military



Air

At Technimount, we understand that EMS Providers need solutions that they can rely on. We design and develop quality mounting systems which are safe and flexible, allowing you to concentrate on what matters most - patient care.

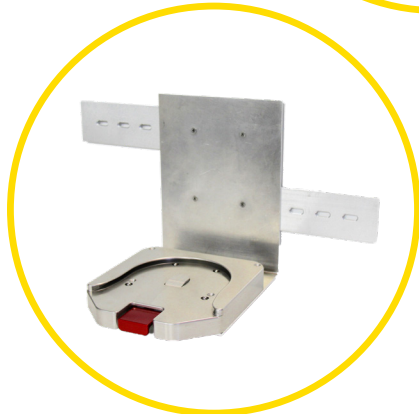
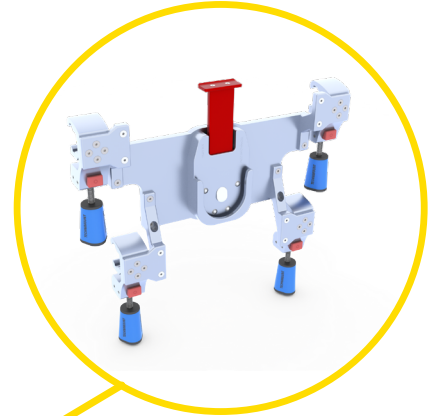
# BRACKET PRO SERIE® 76

## POTENTIAL CONFIGURATIONS

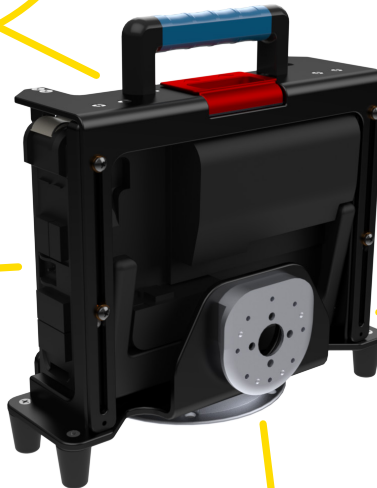
Safety MD Transporter



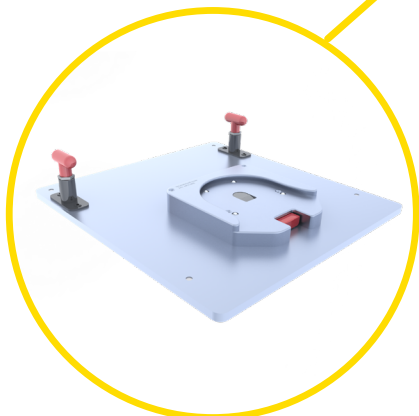
Wall Mount System (EU)



Wall Mount System



Safety Arm System



Floor Mount  
Air Ambulance



Standard Surface Base

# TECHNICAL SPECIFICATIONS

<b>Product Name (Bracket)</b>	Bracket Pro Serie® 76
<b>Compatibility of Medical Device</b>	Philips Tempus Pro
<b>Environment of Usage</b>	EMS - Military
<b>Device Section Material</b>	High-Density Aluminum - Polyurethane - Acetal Feet
<b>Bottom Disc Section Material</b>	Aluminum with Stainless Steel Insert and Peek Cushions
<b>Temperature of Usage</b>	- 35° C @ 45° C (Direct Conduction)
<b>Impact Resistance - Ground - USA</b>	SAE J3043 in Progress - (30 G) Plus 10% Safety Factor (in process)
<b>Impact Resistance - Flight</b>	FAA - FAR -DOT 27.561 & DOT 27.562 up to 20G (in process)
<b>Installation</b>	Locking Mechanism without Screws
<b>Attachment Options</b>	2 Locking Discs - Standard Bottom Section - Anti-Rotation Back Micro Disc
<b>Transportation Compatibility System</b>	<p>Compatible with Technimount's:</p> <ul style="list-style-type: none"> <li>• Standard Surface Base</li> <li>• Safety Arm System (For Stryker Cots PowerPro - XT and Mx-Pro)</li> <li>• Floor Mount Platform (Flight)</li> <li>• Wall Mount Systems</li> <li>• Safety MD Transporter</li> </ul>
<b>Options</b>	Bracket Pro Serie® 76 - SMT for the Tempus Pro with Smart Mount
<b>Features</b>	<ul style="list-style-type: none"> <li>• Access to Printer and all Connectors and Accessories</li> <li>• No Screws Attached to the Medical Device</li> <li>• Red Quick Release to Easily Insert and Remove the Medical Device</li> </ul>
<b>Physical Overall Dimensions</b>	<p>Bracket Pro Serie® 76</p> <ul style="list-style-type: none"> <li>• Length 8.06 in., Width 13.08 in., Height 12.27 in</li> </ul> <p>Bracket Pro Serie® 76 - SMT</p> <ul style="list-style-type: none"> <li>• Length 8.06 in., Width 13.08., Height 13.82 in</li> </ul>
<b>Weight</b>	<p>Bracket Pro Serie® 76</p> <ul style="list-style-type: none"> <li>• Bracket Only - 5.87 lbs</li> <li>• Bracket with the Medical Device - 12.27 lbs</li> </ul> <p>Bracket Pro Serie® 76 - SMT</p> <ul style="list-style-type: none"> <li>• Bracket Only - 6.63 lbs</li> <li>• Bracket with the Medical Device and Smart Mount - 24.53 lbs</li> </ul>
<b>Part Numbers</b>	<ul style="list-style-type: none"> <li>• Bracket Pro Serie® 76 - 320-10-PRO-RDT</li> <li>• Bracket Pro Serie® 76 - SMT - 320-10-PRO-RDT-SMT</li> <li>• Standard Surface Base - 100-20-UN</li> </ul>

# YOUR SAFETY IS OUR PRIORITY



## FEATURES

- ✓ Bracket respects access to medical device components and features
- ✓ One-Handed, Red Quick Release Mechanism located on the top of the bracket
- ✓ Bracket secures the medical device without screws
- ✓ Anti-rotation back disc and universal standard bottom disc for support on various Technimount arm and wall systems
- ✓ Made from high-density aluminum with black-anodized finish with polyurethane plastic transport handle
- ✓ Design complies with SAE J3043, FAA-FAR-DOT 27.561 and DOT 27.562 (in process)

## BENEFITS

- + Flexible for use in different applications (surface, floor, cot/stretchers, and wall systems) as well as other EMS or military environments
- + No interference with the medical device printer, components, connectors and wires
- + Easily install and remove the medical device and its Smart Mount from the mounting system
- + Access to medical device from all angles (360° rotation on Technimount's Standard Surface Base)
- + Resistant to biological fluids and Quaternary-type disinfectants for easy cleaning
- + Reduces the risk of damage to the equipment and ensures the safety of patients and crews during air and ground transport



Bracket Pro Serie® 76 - SMT for the Tempus Pro with Smart Mount

## SAFETY AND FLEXIBILITY WHERE IT MATTERS MOST

[technimount.com](http://technimount.com)

