



# TECHNIMOUNT

EMS™



## WALL MOUNT PRO™

BRACKET MOUNTING SYSTEM FOR WALL INSTALLATION

### SAFETY AND FLEXIBILITY WHERE IT MATTERS MOST

The Wall Mount Pro is designed to secure medical devices to emergency vehicle walls, providing fast and easy access to them while maximizing workspaces.

Compact and lightweight, the Wall Mount Pro design complies with the highest industry safety standards for the safe transportation of medical devices, SAE J3043.

At Technimount, we understand that EMS Providers need solutions that they can rely on. We design and develop quality mounting systems which are safe and flexible, allowing you to concentrate on what matters most- patient care.



Hospital



Ambulance



Military

# WALL MOUNT PRO

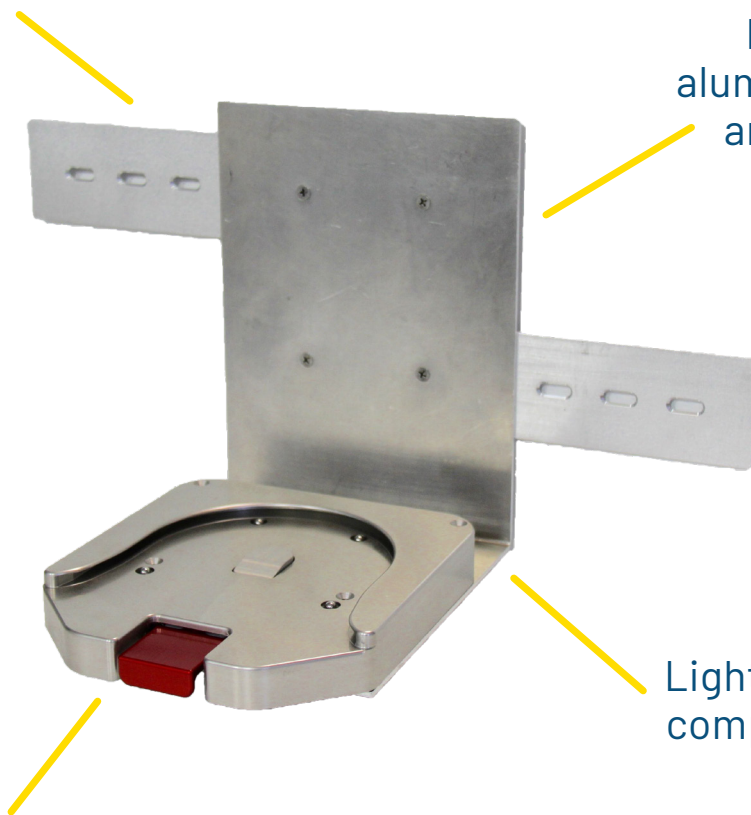
## PRODUCT ILLUSTRATION

Technimount System's Standard Surface Base and Extended Base can be installed on the Wall Mount Pro.

Lightweight and easy to install on emergency vehicle walls, it is compatible with all products from Technimount System which have the Standard Bottom Disc, such as the Bracket Pro Serie®.

Quick and easy to install on emergency vehicle walls

High-density aluminum with silver-anodized finish



Lightweight and compact design

Compatible with Technimount's Standard Surface Base and Extended Base

# TECHNICAL SPECIFICATIONS

<b>Product Name</b>	Wall Mount Pro™
<b>Compatibility</b>	<ul style="list-style-type: none"><li>• Bracket Pro Serie®</li><li>• Standard Surface Base</li><li>• Extended Base</li></ul>
<b>Environment of Usage</b>	EMS - Hospital/Clinic - Military
<b>Disc Section Material</b>	<ul style="list-style-type: none"><li>• Wall Mount Pro - Aluminium 5052-H32 Alloy with Silver-Anodized Finish</li><li>• Standard Surface Base - Aluminium 6061-T6 Alloy with Silver-Anodized Finish</li></ul>
<b>Number of Installation Points</b>	4 points on the Standard Surface Base
<b>Impact Resistance - Ground - USA</b>	SAE J3043 - (30 G) Plus 10% Safety Factor (in process)
<b>Temperature of Usage</b>	-35° C @ 45° C
<b>Features</b>	<ul style="list-style-type: none"><li>• Multiple attachment points for maximum flexibility</li><li>• Customizable installation options</li><li>• Access to the medical device from both sides of the Wall Mount Pro</li><li>• Resistant to biological fluids, sodium and Quaternary-type disinfectants</li><li>• Adaptable with other mounting solutions</li></ul>
<b>Physical Overall Dimensions</b>	<ul style="list-style-type: none"><li>• Wall Mount Pro - Width 7.5 in., Depth 8 in., Height 10 in.</li><li>• Plate Adapter - Length 15 in., Width 1.5 in.</li></ul>
<b>Weight</b>	<ul style="list-style-type: none"><li>• Wall Mount Pro - 4.61 lbs.</li><li>• Wall Mount Pro with Standard Surface Base - 6.67 lbs.</li></ul>
<b>Part Number</b>	<ul style="list-style-type: none"><li>• Wall Mount Pro - 600-00-WMA</li><li>• 90° L-Shape and Plate Adapters - 610-00-WMA</li><li>• Standard Surface Base - 100-20-UN</li><li>• Extended Base - 110-20-UN</li></ul>

# YOUR SAFETY IS OUR PRIORITY

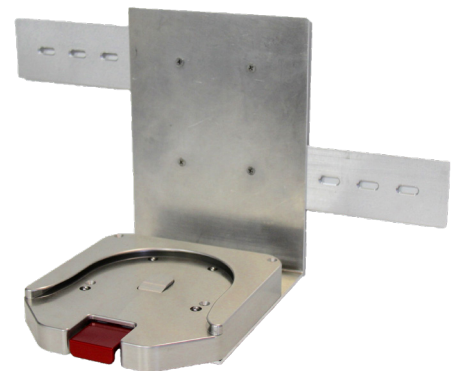


## FEATURES

- ✓ Designed to secure medical devices on emergency vehicle walls for fast and easy access during patient transport
- ✓ Certified mounting system that complies with the highest industry standards and regulations for the secure transport of medical devices, SAE J3043
- ✓ Quick and easy to install on emergency vehicle walls with multiple attachment points for maximum flexibility
- ✓ Made from high-density aluminum with silver-anodized finish
- ✓ Compatible with the Standard Surface Base, Extended Base and all Technimount System products with the Standard Bottom Disc, such as the Bracket Pro Serie®

## BENEFITS

- + Minimum space required for installation, maximizing workspace environments inside emergency vehicles
- + Reduce risks of damage to the equipment and ensures the safety of patients and crews during EMS and Critical Care Transport
- + Access to medical device from both sides of the Wall Mount Pro
- + Red Quick Release Mechanism on the Standard Surface Base and Extended Base for easy installation and remove of the medical device
- + Resistant to biological fluids, sodium and Quaternary-type disinfectants



## SAFETY AND FLEXIBILITY WHERE IT MATTERS MOST

[technimount.com](https://www.technimount.com)

