



**TECHNIMOUNT**  
EMS™



## **BRACKET PRO SERIE® 105**

MOUNTING SYSTEM FOR THE ENVE®/REVEL® VENTILATOR

### **SAFETY AND FLEXIBILITY WHERE IT MATTERS MOST**

The Bracket Pro Serie® 105 is designed to give fast and easy access to the EnVe/ReVel Ventilator. It is a lightweight and robust design allowing to secure the medical device during EMS and Critical Care Transport.

The Bracket Pro Serie® 105 is designed to comply with the highest industry safety standards for transport of medical equipment, SAE J3043.

At Technimount EMS, we understand that EMS and Critical Care Transport teams need solutions that they can rely on. We design and develop quality mounting systems which are safe and flexible, allowing you to concentrate on what matters most - patient care.



Hospital



Ambulance



Stretcher



Military



Air

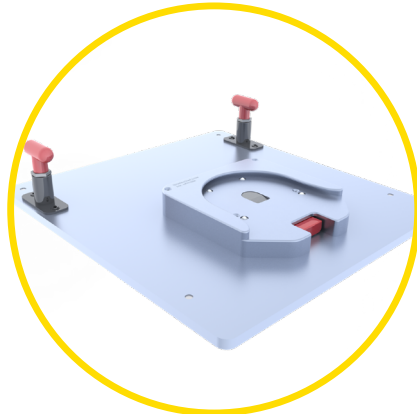
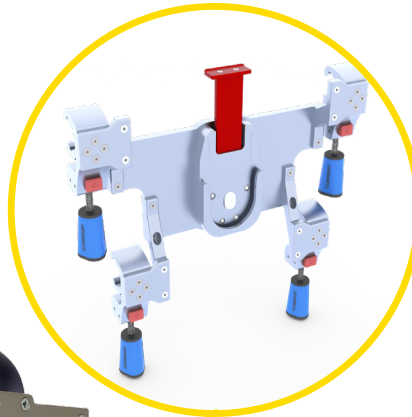
# BRACKET PRO SERIE® 105

## POTENTIAL CONFIGURATIONS

Safety MD Transporter



Wall Mount Systems (EU)



Floor Mount  
Air Ambulance



Safety Arm System



Standard Surface Base



Wall Mount Systems (NA)

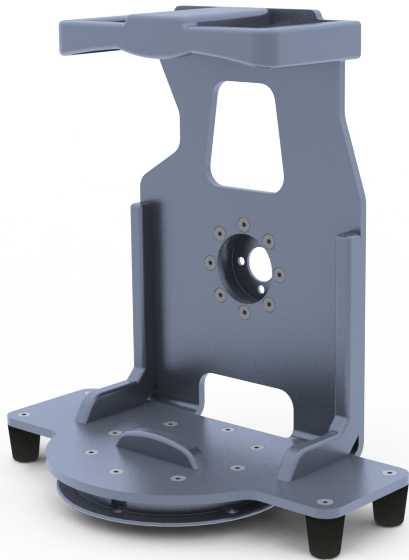


# TECHNICAL SPECIFICATIONS

Product Name	Bracket Pro Serie® 105
Product Description	Bracket mounting system to secure the EnVe /ReVel Ventilator on surfaces, cots/stretchers, walls and floors in emergency vehicles
Compatibility of Medical Device*	EnVe /ReVel Ventilator from Vyaire Medical Inc.
Environment of Usage	EMS/CCT (Ground & Flight) – Hospital/Clinic, Military
Product Section Material	<ul style="list-style-type: none"><li>• Main Assembly: Aluminum 6061-T6</li><li>• Standard Bottom Disc: Aluminum 6061-T6 with 304 Stainless Steel Insert</li><li>• Anti-Rotation Micro Disc: Aluminum 6061-T6</li></ul>
Product Finish	<ul style="list-style-type: none"><li>• Main Assembly: Silver-Anodized Finish</li><li>• Standard Bottom Disc: Silver-Anodized Finish</li><li>• Anti-Rotation Micro Disc: Silver-Anodized Finish</li></ul>
Environmental Regulation	Complying with RoHs 3
Temperature of Usage	- 35° C to 45° C
Certification	Designed to Comply with: <ul style="list-style-type: none"><li>• SAE J3043 (26 G)</li><li>• FAA-FAR-DOT 27.561 &amp; DOT 27.562 (Flight)</li></ul>
Installation	Device retained on main assembly with no screws attached to the medical Device
Attachment Options	2 Locking Discs – Standard Bottom Disc – Anti-Rotation Micro Disc
Transportation Compatibility System	Compatible with Technimount's: <ul style="list-style-type: none"><li>• Standard Surface Base</li><li>• Safety Arm System For Stryker Cots (PowerPro – XT and Mx-Pro)</li><li>• Floor Mount Platform (Flight)</li><li>• Wall Mount Systems (Micro Base and Standard Base)</li><li>• Safety MD Transporter</li></ul>
Features	<ul style="list-style-type: none"><li>• Robust Mounting Solution for EMS/CCT/ALS Transport</li><li>• Flight and Ground Compatibility</li><li>• Multiple Configuration Options for Transport</li></ul>
Physical Overall Dimensions	Width 12 in, Depth 7.23 in, Hight 13.07 in
Weight	5.752 lb
Part Number	<ul style="list-style-type: none"><li>• 1400-10-BDV - Bracket Pro Serie® 105</li><li>• 100-20-UN - Standard Surface Base</li></ul>
Other Models and Configurations Options	Contact Technimount EMS for more information or for other options at <a href="mailto:customerservice@technimount.com">customerservice@technimount.com</a>

\* Product and medical equipment manufacturers names are trademarks™ or registered trademarks® of their respective holders. Technimount does not have a commercial relationship with these medical equipment manufacturers.

# YOUR SAFETY IS OUR PRIORITY

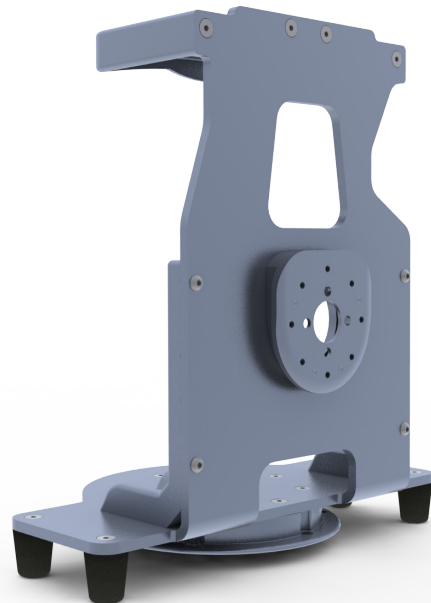


## FEATURES

- ✓ Designed for the EnVe/ReVel ventilator by Vyaire
- ✓ Bottom disc allows for 360° rotation when installed on the Standard Surface Base
- ✓ Anti-Rotation back disc for vertical support on different wall and arm systems
- ✓ Lightweight and robust design
- ✓ High-Density Aluminum with silver-anodized finish
- ✓ Designed in compliance with SAE J3043
- ✓ Compatible with all of Technimount's Products

## BENEFITS

- + Multiple configurations on cot/stretchers, wall, Floor/Surface for EMS or Critical Care Transport
- + Access to medical device from all angles (360° rotation on Technimount's Standard Surface Base)
- + Quick installation and removal of bracket from Technimount's mounting systems
- + Easy access to all connectors and functionalities of medical device
- + Certified mounting systems that comply with the highest industry standards and regulations
- + Reduces risks of damage to the equipment and ensures the safety of patients and crew during EMS and Critical Care Transport



## SAFETY AND FLEXIBILITY WHERE IT MATTERS MOST

[technimount.com](https://technimount.com)

