



**TECHNIMOUNT**  
EMS™



## **BRACKET PRO SERIE® 110**

MOUNTING SYSTEM FOR MONNAL T-60 VENTILATOR

### **SAFETY AND FLEXIBILITY WHERE IT MATTERS MOST**

The Bracket Pro Serie® 110 is designed to give fast and easy access to the Monnal T60 Ventilator. It is a lightweight and robust design allowing to secure the medical device during EMS and Critical Care transport.

The Bracket Pro Serie® 110 is designed to comply with the highest industry safety standards for transport of medical equipment, SAE J3043.

At Technimount EMS, we understand that EMS and Critical Care Transport teams need solutions that they can rely on. We design and develop quality mounting systems which are safe and flexible, allowing you to concentrate on what matters most - patient care.



Hospital



Ambulance



Stretcher



Military



Air

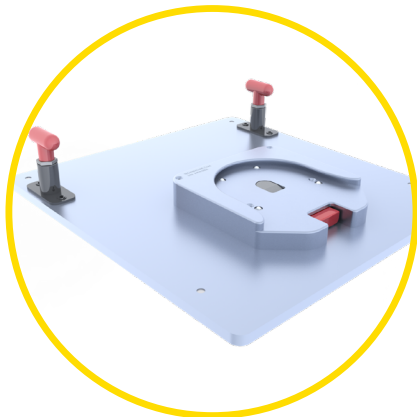
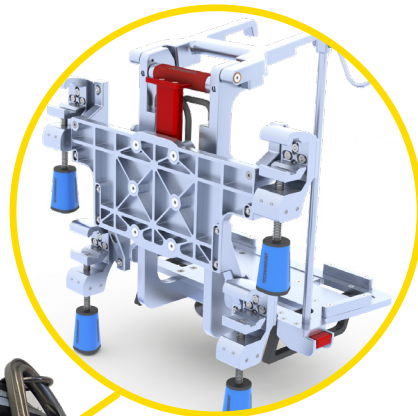
# BRACKET PRO SERIE® 110

## POTENTIAL CONFIGURATIONS

Safety MD Transporter



Wall Mount System  
(Ground Ambulance in Europe)



Air Ambulance  
Floor Mount

Standard  
Surface Base



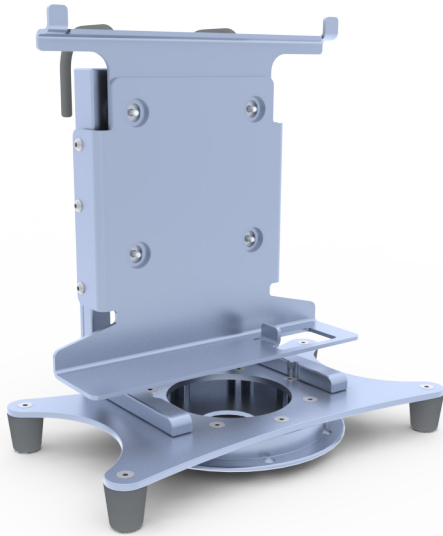
Safety Arm System

# TECHNICAL SPECIFICATIONS

Product Name	Bracket Pro Serie® 110
Product Description	Bracket mounting system to secure the Monnal T60 Ventilator on surfaces, cots/stretchers, walls and floors in emergency vehicles
Compatibility of Medical Device*	Monnal T60 Ventilator from Air Liquide
Environment of Usage	EMS/CCT (Ground & Flight) – Hospital/Clinic, Military
Product Section Material	<ul style="list-style-type: none"><li>• Main Assembly: Aluminum 6061-T6</li><li>• Standard Bottom Disc: Aluminum 6061-T6 with 304 Stainless Steel Insert</li><li>• Anti-Rotation Micro Disc: Aluminum 6061-T6</li></ul>
Product Finish	<ul style="list-style-type: none"><li>• Main Assembly: Silver-Anodized Finish</li><li>• Standard Bottom Disc: Silver-Anodized Finish</li><li>• Anti-Rotation Micro Disc: Silver-Anodized Finish</li></ul>
Environmental Regulations	Complying with RoHS 3
Temperature of Usage	- 35° C to 45° C
Certification:	Tested to Comply with: <ul style="list-style-type: none"><li>• SAE J3043 (26 G)</li><li>• FAA-FAR-DOT 27.561 &amp; DOT 27.562 (Flight)</li></ul>
Installation	Device Retained on Platform with Junction and Back Plates
Attachment Options	2 Locking Discs – Standard Bottom Disc – Anti-Rotation Micro Disc
Transportation Compatibility System	Compatible with Technimount's: <ul style="list-style-type: none"><li>• Standard Surface Base</li><li>• Technimount's Stretcher Safety Arm System For Stryker Cots (PowerPro – XT and Mx-Pro)</li><li>• the Floor Mount Platform (Flight)</li><li>• Wall Mount System (Micro Base System)</li><li>• the Safety MD Transporter</li></ul>
Features	<ul style="list-style-type: none"><li>• Robust Mounting Solution for EMS/CCT/ALS Transport</li><li>• Access to all Connectors and Accessories</li><li>• Retractable hooks for Temporary Transport Between Hospital and Ambulance</li><li>• Fits with the Carrying Case System without Modification</li></ul>
Physical Overall Dimensions	Width 6.94 in., Depth 10.81 in., Height 12.07 in.
Weight	5.79 lb
Part Number	<ul style="list-style-type: none"><li>• 130-10-MT - Bracket Pro Serie® 110</li><li>• 1300-11-MTBH - Bracket Pro Serie® 110 with Back Hooks</li><li>• 100-20-UN - Standard Surface Base</li></ul>
Others Models and Configurations Options	Contact Technimount EMS for more information or for other options at <a href="mailto:customerservice@technimount.com">customerservice@technimount.com</a>

\* Product and medical equipment manufacturers names are trademarks™ or registered trademarks® of their respective holders. Technimount does not have a commercial relationship with these medical equipment manufacturers.

# YOUR SAFETY IS OUR PRIORITY

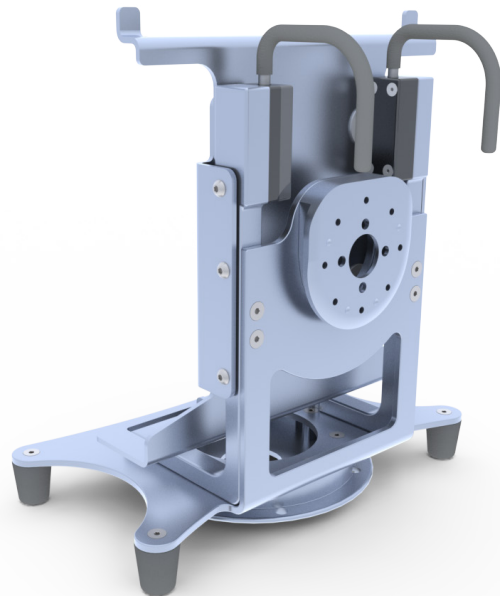


## FEATURES

- ✓ Designed for the Monnal T-60 ventilator by Air Liquide
- ✓ Standard Bottom Disc allows for 360° rotation when installed on the Standard Surface Base
- ✓ Anti-Rotation Micro Disc for vertical support on different wall and arm systems
- ✓ Lightweight and robust design
- ✓ Retractable back hooks for temporary transfer from ambulance to hospital
- ✓ Designed to comply with SAE J3043
- ✓ Compatible with all of Technimount's Products

## BENEFITS

- + Multiple configurations on cot/stretchers, wall, Floor/Surface for EMS or Critical Care Transport
- + Access to medical device from all angles (360° rotation on Technimount's Standard Surface Base)
- + Quick installation and removal of bracket from Technimount's mounting systems
- + Lightweight and robust design
- + Certified mounting systems that comply with the highest industry standards and regulations
- + Reduces risks of damage to the equipment and ensures the safety of patients and crew during EMS and Critical Care transport



## SAFETY AND FLEXIBILITY WHERE IT MATTERS MOST

[technimount.com](https://technimount.com)

