



TECHNIMOUNT
EMS™



BRACKET PRO SERIE® 25 FLEX

MOUNTING SYSTEM FOR ZOLL® X SERIES® MONITOR/DEFIBRILLATOR

SAFETY AND FLEXIBILITY WHERE IT MATTERS MOST

The Bracket Pro Serie® 25 Flex is designed for intensive use in tough EMS environments. It provides fast and easy access to the ZOLL® X Series® monitor/defibrillator.

The Bracket Pro Serie® 25 Flex is designed to comply with the highest industry safety standards for transport of medical equipment, SAE J3043.

At Technimount EMS, we understand that EMS and Critical Care Transport teams need solutions that they can rely on. We design and develop quality mounting systems which are safe and flexible, allowing you to concentrate on what matters most- patient care.



Hospital



Ambulance



Stretcher



Military

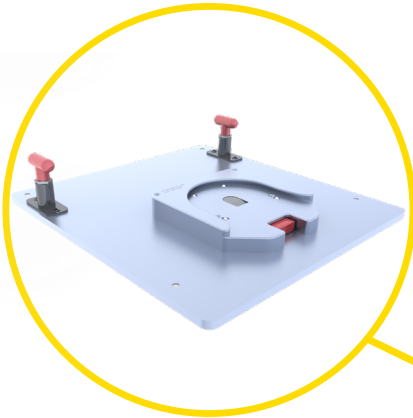


Air

BRACKET PRO SERIE® 25 FLEX

POTENTIAL CONFIGURATIONS

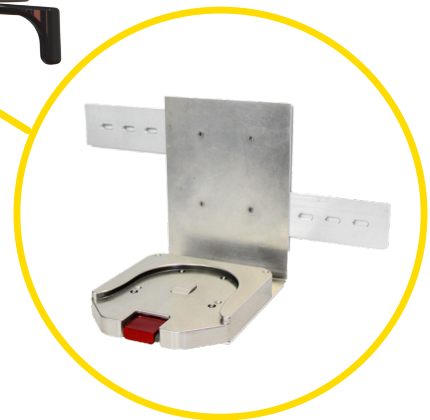
Floor Mount
Air Ambulance



Safety Arm System



Standard Surface Base



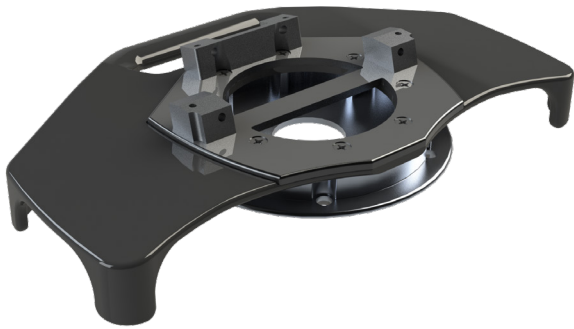
Wall Mount Systems

TECHNICAL SPECIFICATIONS

Product Name	Bracket Pro Serie® 25 Flex
Product Description	Single disc bracket mounting system to secure the ZOLL® X Series® on surfaces, cots/stretchers and floors in emergency vehicles
Compatibility of Medical Device *	ZOLL® X Series® Monitor/Defibrillator
Environment of Usage	EMS/CCT (Ground & Flight) – Hospital/Clinic, Military
Product Section Material	<ul style="list-style-type: none">• Main Assembly: UV Stabilized ABS Plastic• Top Plate: Aluminum 6061-T6• Standard Bottom Disc: Aluminum 6061-T6 with 304 Stainless Steel Insert
Product Finish	<ul style="list-style-type: none">• Top Plate: Black-Anodized Finish• Standard Bottom Disc: Silver-Anodized Finish
Environmental Regulations	Complying with RoHS 3
Temperature of Usage	- 35° C to 45° C
Certification	Designed to Comply with: <ul style="list-style-type: none">• SAE J3043 (26 G)• FAA-FAR-DOT 27.561 & DOT 27.562 (Flight)
Installation	Device Retained with 3 Blocks: 1 Lateral Block and 2 Side Blocks Installed into the Medical Device
Attachment Options	Standard Bottom Disc
Transportation Compatibility System	Compatible with Technimount's: <ul style="list-style-type: none">• Standard Surface Base• Safety Arm System For Stryker Cots (PowerPro – XT and Mx-Pro)• Floor Mount (Flight)• Wall Mount System
Features	<ul style="list-style-type: none">• Robust Mounting Solution for EMS/CCT/ALS Transport• Access to all Connectors and Accessories• Flight and Ground Compatibility• Multiple Configuration Options for Transport
Physical Overall Dimensions	Width 13.2 in, Depth 8.0 in, Height 1.63 in
Weight	1.9 lb
Part Number	<ul style="list-style-type: none">• 100-13-XZ-FX - Bracket Pro Serie® 25 Flex• 100-20-UN - Standard Surface Base
Other Models and Configuration Options	Contact Technimount EMS for more information or for other options at customerservice@technimount.com

* Product and medical equipment manufacturers names are trademarks™ or registered trademarks® of their respective holders. Technimount does not have a commercial relationship with these medical equipment manufacturers.

YOUR SAFETY IS OUR PRIORITY



FEATURES

- ✓ Made from high-density aluminum and durable UV Stabilized ABS Plastic
- ✓ Resistant to biological fluids and Quaternary-type disinfectants
- ✓ Standard Bottom Disc for installation on Technimount's Standard Surface Base
- ✓ Designed with a positive curve so bracket becomes level with the weight of the medical device to protect the Standard Bottom Disc
- ✓ Molded feet eliminate the need for replacement and protect the bracket and the medical device when placed on the ground

BENEFITS

- + Bracket is extremely durable and abrasive resistant, designed for tough EMS applications
- + Combination of bracket and medical device remain lightweight and flexible
- + Quick installation and removal of bracket from Technimount's mounting systems
- + Access to medical device from all angles (360° rotation on Technimount's Standard Surface Base)
- + Secure mounting system designed to comply with the highest industry standards and regulations, SAE J3043
- + Reduces risks of damage to the equipment and ensures the safety of patients and crew during EMS and Critical Care transport



SAFETY AND FLEXIBILITY WHERE IT MATTERS MOST

technimount.com



Bracket Pro Serie, Technimount EMS are Registered Trademarks of Technologies CGC Inc.
ZOLL X Series is a Trademark of ZOLL Medical Corporation.

© 2021 Technimount E.M.S. Holding Inc. – All Rights Reserved – Printed in Canada

BP25 Flex-TS-202107-01