



TECHNIMOUNT
EMS™



BRACKET PRO SERIE® 75

MOUNTING SYSTEM FOR THE PHILIPS® TEMPUS® LS

SAFETY & FLEXIBILITY WHERE IT MATTERS MOST

The Bracket Pro Serie® 75 is designed for air and ground EMS transport of the Philips® Tempus® LS.

Highly flexible, the Bracket Pro Serie® 75 can be used in multiple applications including surface, floor, cot/stretcher and wall systems.



Ambulance



Stretcher



Military



Air

At Technimount EMS, we understand that EMS and Critical Care Transport teams need solutions that they can rely on. We design and develop quality mounting systems which are safe and flexible, allowing you to concentrate on what matters most - patient care.

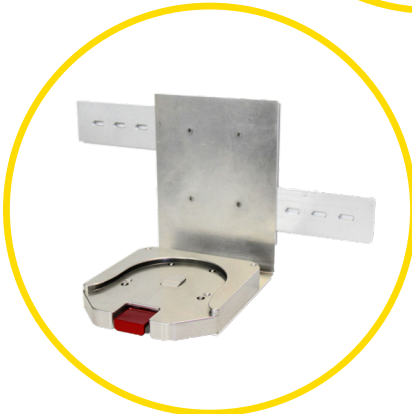
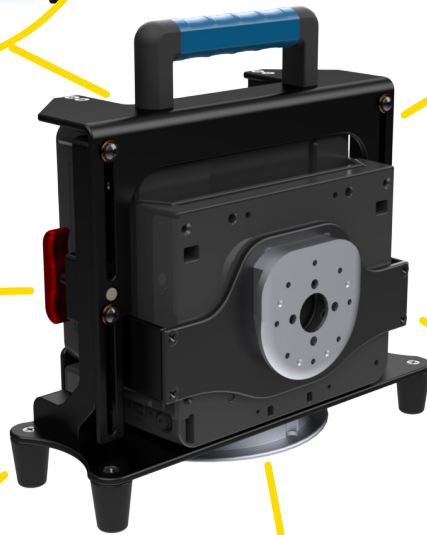
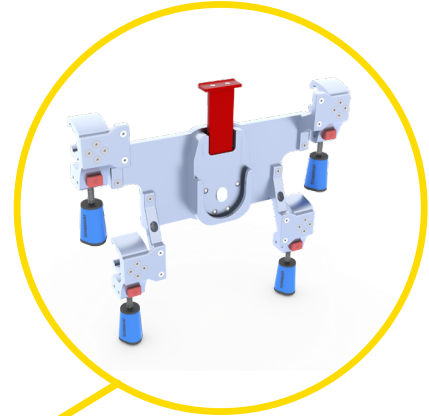
BRACKET PRO SERIE® 75

POTENTIAL CONFIGURATIONS

Safety MD Transporter



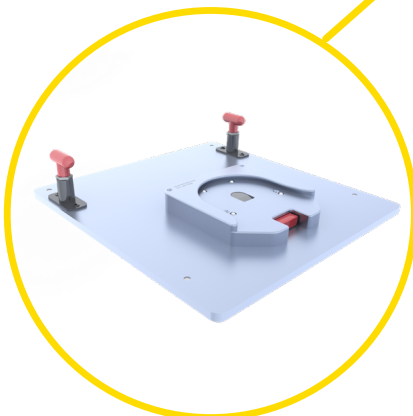
Wall Mount System (EU)



Wall Mount System



Safety Arm System



Floor Mount
Air Ambulance



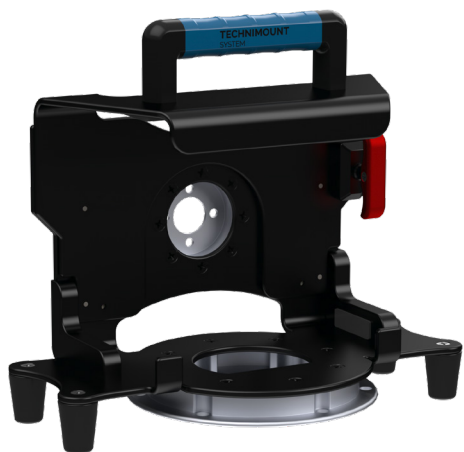
Standard
Surface Base

TECHNICAL SPECIFICATIONS

Product Name	Bracket Pro Serie® 75
Product Description	Dual disc bracket mounting system to secure the Philips® Tempus® LS on surfaces, cots/stretchers and wall systems in emergency vehicles
Compatibility of Medical Device*	Tempus® LS from Philips®
Environment of Usage	EMS/CCT (Ground & Flight) – Hospital/Clinic, Military
Product Section Material	<ul style="list-style-type: none">Main Assembly: Aluminum 6061-T6Standard Bottom Disc: Aluminum 6061-T6 with 304 Stainless Steel Insert
Product Finish	<ul style="list-style-type: none">Main Assembly: Black-Anodized FinishStandard Bottom Disc: Silver-Anodized Finish
Environmental Regulations	Complying with RoHs 3
Temperature of Usage	- 35° C to 45° C
Certification	<p>Tested in Compliance with:</p> <ul style="list-style-type: none">SAE J3043 (26 G) <p>Designed to Comply with:</p> <ul style="list-style-type: none">FAA-FAR-DOT 27.561 & DOT 27.562 (Flight)
Installation	Locking Mechanism without Screws
Attachment Options	2 Locking Discs – Standard Bottom Disc – Anti-Rotation Micro Disc
Transportation Compatibility System	<p>Compatible with Technimount's:</p> <ul style="list-style-type: none">Standard Surface BaseSafety Arm System (For Stryker Cots (PowerPro – XT and Mx-Pro)Floor Mount (Flight)Wall Mount System (Micro Base System)Safety MD Transporter
Features	<ul style="list-style-type: none">Access to all Connectors and AccessoriesNo Screws Attached to the Medical DeviceRed Quick Release to Easily Insert and Remove the Medical Device
Physical Overall Dimensions	<ul style="list-style-type: none">Bracket Pro Serie® 75: Width 11.6 in, Depth 6.79 in, Height 10.25 inBracket Pro Serie® 75 – SMT: Width 11.6 in, Depth 7.0 in, Height 11.3 in
Weight	<ul style="list-style-type: none">4.85 lb – Bracket Pro Serie® 755.1 lb – Bracket Pro Serie® 75-SMT
Part Numbers	<ul style="list-style-type: none">321-10-LS-RDT – Bracket Pro Serie® 75321-10-LS-RDT-SMT – Bracket Pro Serie® 75-SMT100-20-UN – Standard Surface Base
Others Models and Configuration Options	Contact Technimount EMS for more information or for other options at customerservice@technimount.com

* Product and medical equipment manufacturers names are trademarks™ or registered trademarks® of their respective holders. Technimount does not have a commercial relationship with these medical equipment manufacturers.

YOUR SAFETY IS OUR PRIORITY



FEATURES

- ✓ Bracket respects access to medical device components and features
- ✓ Red Quick Release Mechanism located on the right side of the bracket
- ✓ Bracket secures the medical device without screws
- ✓ Anti-Rotation Micro Disc and Standard Bottom Disc for support on various Technimount arm and wall systems
- ✓ Made from high-density aluminum with black-anodized finish with polyurethane plastic transport handle
- ✓ Tested in compliance with SAE J3043

BENEFITS

- + Flexible for use in different applications (surface, floor, cot/stretcher, and wall systems) as well as in other EMS environments
- + No interference with the medical device components, connectors and wires
- + Easily install and remove the medical device and its Smart Mount from the mounting system
- + Access to medical device from all angles (360° rotation on Technimount's Standard Surface Base)
- + Resistant to biological fluids and Quaternary-type disinfectants for easy cleaning
- + Reduces the risk of damage to the equipment and ensures the safety of patients and crews during air and ground transport

SAFETY AND FLEXIBILITY WHERE IT MATTERS MOST



Bracket Pro Serie® 75 - SMT for the Tempus LS with Smart Mount

technimount.com

