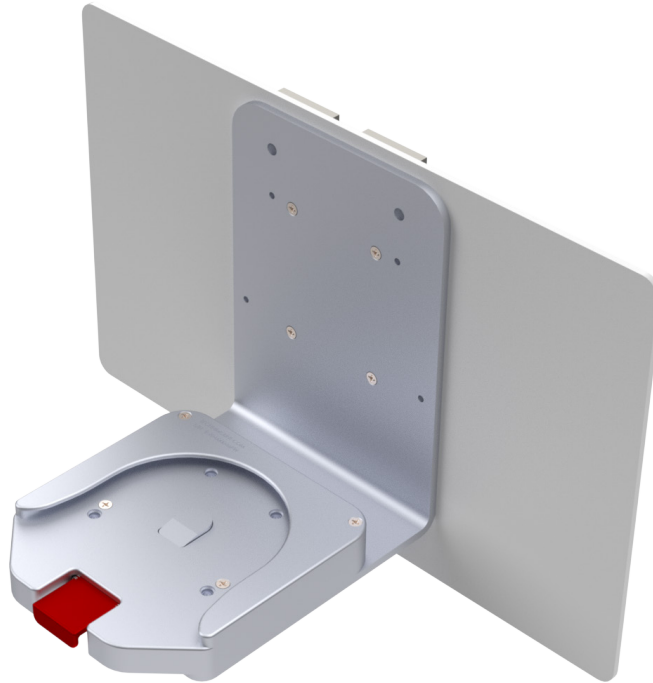




# TECHNIMOUNT

EMS™



## WALL MOUNT PRO™

BRACKET MOUNTING SYSTEM FOR WALL INSTALLATION

### SAFETY AND FLEXIBILITY WHERE IT MATTERS MOST

The Wall Mount Pro provides an additional installation option for medical devices in emergency vehicles, maximizing the workspace environment.

Easy to install and lightweight, the Wall Mount Pro is a flexible solution which is compatible with all of Technimount's products featuring a Standard Bottom Disc, such as the Bracket Pro Serie®.

At Technimount EMS, we understand that EMS and Critical Care Transport teams need solutions that they can rely on. We design and develop quality mounting systems which are safe and flexible, allowing you to concentrate on what matters most- patient care.



Hospital



Ambulance



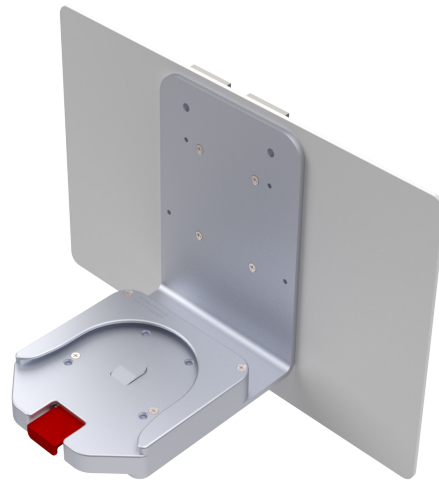
Military

# WALL MOUNT PRO

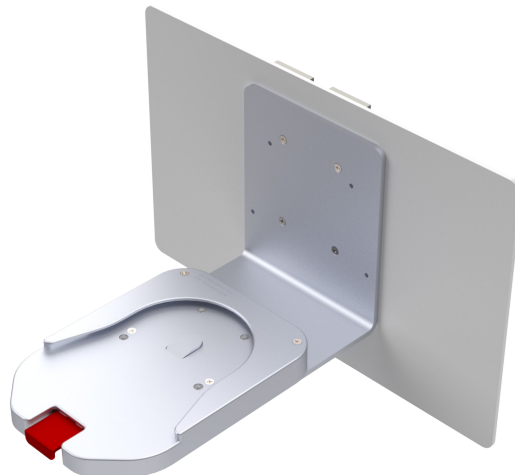
## CONFIGURATION OPTIONS

Providing an additional installation option for medical devices inside emergency vehicles, the Wall Mount Pro is a flexible solution that instantly maximizes the workspace environment.

### STANDARD SURFACE BASE OPTION



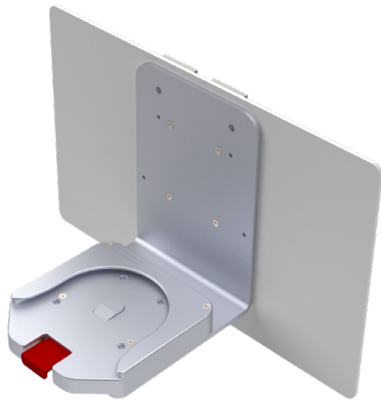
### EXTENDED BASE OPTION



# TECHNICAL SPECIFICATIONS

<b>Product Name</b>	Wall Mount Pro™
<b>Product Description</b>	Designed to secure medical devices to emergency vehicle walls.
<b>Environment of Usage</b>	EMS - Hospital/Clinic - Military
<b>Product Section Material</b>	<ul style="list-style-type: none"><li>• Wall Mount Pro (Standard and Extended Base Option): Aluminum 5052-H32</li><li>• Standard Surface Base: Aluminum 6061-T6</li><li>• Extended Base: Aluminum 6061-T6</li></ul>
<b>Product Finish</b>	<ul style="list-style-type: none"><li>• Wall Mount Pro (Standard and Extended Base Option): Silver-Anodized Finish</li><li>• Standard Surface Base: Silver-Anodized Finish</li><li>• Extended Base: Silver-Anodized Finish</li></ul>
<b>Environmental Regulations</b>	Complying with RoHS 3
<b>Temperature of Usage</b>	-35° C to 45° C
<b>Installation</b>	Installs into ambulance wall studs. Installation must be done by an ambulance builder.
<b>Transportation Compatibility Systems</b>	Compatible with Technimount's: <ul style="list-style-type: none"><li>• Standard Surface Base</li><li>• Extended Base</li><li>• Bracket Pro Serie®</li></ul>
<b>Features</b>	<ul style="list-style-type: none"><li>• Increased flexibility to adapt to different sizes and formats of medical devices</li><li>• Resistant to biological fluids, sodium and Quaternary-type disinfectants</li><li>• Back Plates for multiple attachment points for maximum flexibility</li></ul>
<b>Physical Overall Dimensions</b>	Wall Mount Pro Standard Surface Base Option <ul style="list-style-type: none"><li>• Width 7.5 in, Depth 10.25 in, Height 10.5 in</li></ul> Wall Mount Pro Extended Surface Base Option <ul style="list-style-type: none"><li>• Width 7.5 in, Depth 14.75 in, Height 8.75</li></ul>
<b>Weight</b>	3.3 lb
<b>Maximum Weight Capacity</b>	Contact Technimount EMS Customer Service for more information at <a href="mailto:customerservice@technimount.com">customerservice@technimount.com</a>
<b>Part Number</b>	<ul style="list-style-type: none"><li>• 610-10-WMA - Wall Mount Pro, 90° L-Shape Plate, Back Plate Adapters (2)</li><li>• 100-20-UN - Standard Surface Base</li><li>• 110-20-UN - Extended Base</li></ul>
<b>Other Models and Configuration Options</b>	Contact Technimount EMS Customer Service for more information or for other options at <a href="mailto:customerservice@technimount.com">customerservice@technimount.com</a>

# YOUR SAFETY IS OUR PRIORITY



## FEATURES

- ✓ Designed to secure medical devices on emergency vehicle walls for fast and easy access during patient transport
- ✓ Back Plate Adapters with multiple attachment points for increased installation options
- ✓ Two configuration options available that are compatible with the Standard Surface Base and Extended Base to secure medical devices of various sizes and formats
- ✓ Made from high-density aluminum with silver-anodized finish
- ✓ Compatible with all Technimount products with the Standard Bottom Disc, such as the Bracket Pro Serie®

## BENEFITS

- + Additional installation option for medical devices inside emergency vehicles, maximizing the workspace environment
- + Easily secure and remove the medical device from the wall
- + Increased flexibility to adapt to various sizes and formats of medical devices
- + Resistant to biological fluids, sodium and Quaternary-type disinfectants
- + Designed to securely hold portable medical devices in place while transporting patients in pre-hospital emergency/critical care vehicles



Wall Mount Pro with Back Plate Adapters

**SAFETY AND FLEXIBILITY  
WHERE IT MATTERS MOST**

[technimount.com](https://www.technimount.com)

