

Arm Adapter Flex™ System

Mounting adapter for GCX® Arms

Features

- Lightweight
- Compact size
- Quick Release & Reinstallation
- Safe & Easy
- Immediate Access
- Matches with our Bracket Pro Series mount system

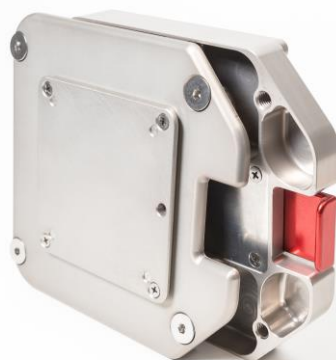
Application of usage

- ER Wall Installation
- Arm Extension
- Intensive Care
- Arm Supports as GCX mounts and the like

Advantages

- Minimum space required for installation
- Latex free
- Biological fluid and sodium solution resistant
- Rust resistant
- 1-year full warranty

Any medical equipment that has been inadequately installed in ambulances, other emergency medical service (EMS) vehicles or crash carts, can potentially pose a serious risk or become dangerous in the event that the vehicle makes frequent or sudden stops, turns or rushed departures. This situation can result in damaged expensive medical equipment or even inflict injuries on a patient, ambulance personnel or clinic staff.



The Arm Adapter Flex™ is designed to adapt the GCX® arm mounting systems to the Technimount System's Bracket Pro Serie® mounting solutions. By adding an Arm Adapter Flex™ on the arm, a Standard or Extended Surface Base can be installed and can secure all types of medical devices.

The features of this support are its very small size and weight, but mainly its flexibility with the various medical device brands. No modification is needed on the arm or any of its features, including the arm rotation and easy access to the medical device.

The system has been tested to meet the manufacturer's requirements and provide, at all times, safety and security in a hospital environment. The installation of this adapter on the Standard or Extended Surface Base is very easy and time efficient.

About Us

Technimount System creates mounts and brackets for portable medical devices such as defibrillators, ventilators, and pumps, that adapt to different brands of medical equipment for OEM ambulance manufacturers, EMS users, and hospitals.

For use with Technimount System [Bracket Pro Serie®](#)

TECHNICAL SPECIFICATIONS

Product name:	Arm Adapter Flex™
Compatibility models:	Bracket Pro Serie® 20, 25, 30, 35, 40, 45 and 50
Environment usage:	Hospital – Clinic – BioMed Dept. – Military hospital
Material:	Base: High density aluminum with anodization process
Temperature of usage:	- 35° C @ 45° C (Direct conduction)
Impact Resistance¹:	Drop test 1.5 M according to the Bracket Pro Serie® mount resistance
No. of installation points:	6 points on surface base and 4 points on adapter
Dimensions: Plate adapter: Support:	4-5/8" Length X 4-13/16" Width X 1/4" Thickness (inch.) 7-1/2" Width X 11" Depth X 5/16" Thickness (inch.)
Rotation:	360 degrees with locking system on the arm support with Standard or Extended Surface Base
Weight:	Support Assy: 1.55 lbs. – 703 g Support Assy Standard version: 1.02 lb
Options:	Standard or Extended Surface Base GCX® Mounting Solutions (Arms)
Part number²:	601-00-WMA-GCX Adapter GCX arm with Extended base 602-00-WMA-GCX Adapter GCX arm with Standard base



Suggested installation

Bracket Pro Serie, Arm Adapter Flex, Technimount E.M.S are registered trademarks of Technologies CGC Inc.

© 2021 Technimount E.M.S. Holding Inc – All Rights Reserved - Printed in Canada.