



TECHNIMOUNT
EMS™



BRACKET PRO SERIE® 35 - HD

MOUNTING SYSTEM FOR LIFEPAK® 15 MONITOR/DEFIBRILLATOR

SAFETY AND FLEXIBILITY WHERE IT MATTERS MOST

The Bracket Pro Serie 35 - Heavy Duty(HD) is made to secure your LIFEPAK 15 monitor/defibrillator from Stryker. This rugged solution was designed for tougher environments and more challenging emergency situations.

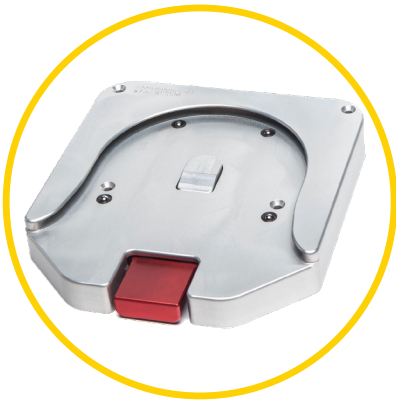
The Bracket Pro Serie 35 - HD is tested in compliance with SAE J3043, the highest industry safety standards for the transport of medical devices.

At Technimount EMS, we understand that EMS and Critical Care Transport teams need solutions that they can rely on. We design and develop quality mounting systems which are safe and flexible, allowing you to concentrate on what matters most - patient care.

BRACKET PRO SERIE® 35 - HD

POTENTIAL CONFIGURATIONS

Standard Surface Base



Safety Arm System



Extended Surface Base

Note: Product may vary from images shown

TECHNICAL SPECIFICATIONS

Product Name	Bracket Pro Serie® 35 – Heavy Duty
Description	Single disc, robust bracket mounting system to secure the Stryker LIFEPAK® 15 on surfaces, cots/stretchers and floors in emergency vehicles
Part Number	<ul style="list-style-type: none">– 210-11-PC15-HD – Bracket Pro Serie® 35 - HD– 100-20-UN – Standard Surface Base
Features	<ul style="list-style-type: none">– Fits with or without carrying case/bag protector on the device– Free access to all connectors and accessories (top & back pouches)
Operating Environment	<ul style="list-style-type: none">– EMS/CCT (Ground)– Hospital/Clinic, Military
Compliance	Tested in compliance with: <ul style="list-style-type: none">– - SAE J3043
Compatible Mounting System	Compatible with : <ul style="list-style-type: none">– Safety Arm System for Stryker Cots (PowerPro – XT and MX-PRO)– Extended Surface Base– Standard Surface Base– Other compatible systems available
Dimensions (W x D x H)	12.7 in. x 7.9 in. x 3.2 in. (32.26 cm x 20.1 cm x 8.1 cm)
Weight	2.3 lbs (1.04 kg)
Composition	<ul style="list-style-type: none">– Main assembly: aluminum 6061-T6, black anodized finish– Standard bottom disc: aluminum 6061-T6 with 304 stainless steel insert, silver anodized finish
Operating Temperature	- 31° F to 113° F (- 35° C to 45° C)
Installation	Device retained on the main assembly with support blocks
Model & Configuration Options	<ul style="list-style-type: none">– For air transport: Bracket Pro Serie® 35 – HD (210-13-PC15-HD-FL)– Contact Technimount EMS for more information or for other options at customerservice@technimount.com.

* Product and medical equipment manufacturer names are Trademarks™ or Registered Trademarks® or their respective holders. Technimount does not have a commercial relationship with there manufacturers.

YOUR SAFETY IS OUR PRIORITY

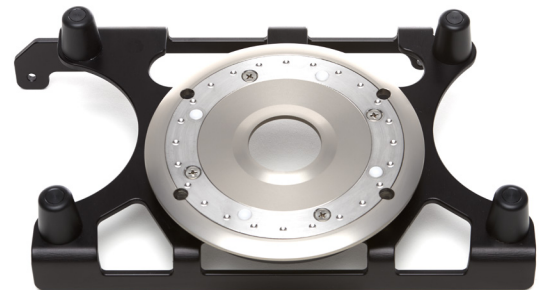


FEATURES

- ✓ Standard bottom disc for installation to support multiple mounting configurations on surfaces, stretchers, and carts.
- ✓ Lightweight material and compact size bracket.
- ✓ Highly resistant anodized aluminum for resistance to biological fluids and sodium/soft acids.
- ✓ Long lasting integrated feet to install the bracket on the surface.
- ✓ Tested in compliance with SAE J3043, the highest industry safety standards for transport of medical devices.

BENEFITS

- + Quick installation and removal of the bracket and access to medical device from all angles.
- + Respects the integrity and functionality of the medical device.
- + Minimizes the risks and damage or replacement of the equipment.
- + Provides stability to prevent damage to the medical device.
- + Ensures the safety of patients and personnel during EMS and critical care transport.



**SAFETY AND FLEXIBILITY
WHERE IT MATTERS MOST**

technimount.com