



TECHNIMOUNT
EMS™



BRACKET PRO SERIE® 140

MOUNTING SYSTEM FOR THE BENEVISION N1 MONITOR WITH DOCKING
STATION AND HANDLE

SAFETY AND FLEXIBILITY WHERE IT MATTERS MOST

The Bracket Pro Serie 140 provides fast and easy access to the BeneVision N1 monitor with docking station and handle during EMS and Critical Care Transport.

The Bracket Pro Serie 140 is tested in compliance with SAE J3043, the highest industry safety standard for transport of medical equipment.

At Technimount EMS, we understand that EMS and critical care transport teams require solutions they can rely on. We design and develop quality mounting systems that are safe and flexible, which allow you to concentrate on what matters most-patient care.



Hospital



Ambulance



Stretcher



Military

BRACKET PRO SERIE® 140

POTENTIAL CONFIGURATIONS

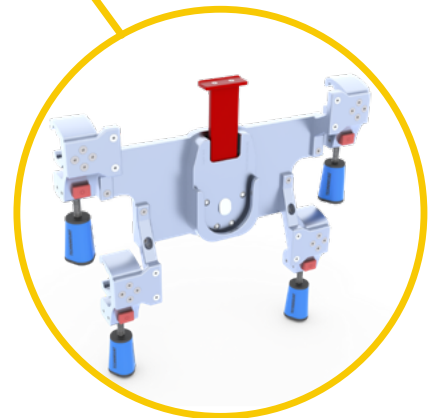
Xtension Pro™
Assistant - CCT



Neonatal Stretcher
System



Safety MD Transporter™
(horizontal)



Wall Mount Pro™ - WR

TECHNICAL SPECIFICATIONS

Product Name	Bracket Pro Serie® 140
Product Description	Dual disc bracket for transport of Mindray BeneVision N1 for Emergency and Critical Care Transport.
Compatibility of Medical Device *	BeneVision N1 with docking station and handle
Environment of Usage	EMS / CCT (Ground) – Hospital / Clinic – Military
Product Section Material	<ul style="list-style-type: none">• Main assembly: Aluminum 6061-T6 and acetal• Anti-rotation micro disc: Aluminum 6061-T6• Micro disc: Aluminum 6061-T6
Product Finish	<ul style="list-style-type: none">• Main assembly: silver anodized finish• Anti-rotation micro disc: silver anodized finish• Micro disc: silver anodized finish
Environmental Regulations	RoHS 3 compliant
Temperature of Usage	-31°F to 113°F (-35°C to 45°C)
Certification	Tested in compliance with: <ul style="list-style-type: none">• SAE J3043
Installation	Device retained on main assembly with red quick release mechanism
Attachment Options	<ul style="list-style-type: none">• Anti-rotation micro disc• Bottom micro disc
Transportation Compatibility System	Compatible with Technimount's: <ul style="list-style-type: none">• Safety MD-Transporter (vertical and horizontal)• Vertical Mounting System• Micro Base• Wall Mount Pro - WR
Features	<ul style="list-style-type: none">• Access to device's monitor, connectors and accessories• Acetal feet to protect the bracket when placed on a surface• Rubber cushions inside the bracket to protect medical device• Red quick release mechanism for easy installation and removal of medical device• Anti-rotation micro disc for installation on vertical and wall mounting systems• Bottom micro disc for installation on horizontal and floor mounting systems
Physical Overall Dimensions	Width 8.65 in (21.97 cm), Depth 7.05 in (17.91 cm), Height 7.32 in (18.59 cm)
Weight	4.5 lbs (2.04 kg)
Part Number	2500-10-BVN1
Other Models and Configuration Options	Contact Technimount EMS for more information or for other options at customerservice@technimount.com

* Product and medical equipment manufacturer names are Trademarks™ or Registered Trademarks® of their respective holders. Technimount does not have a commercial relationship with these medical equipment manufacturers.

YOUR SAFETY IS OUR PRIORITY

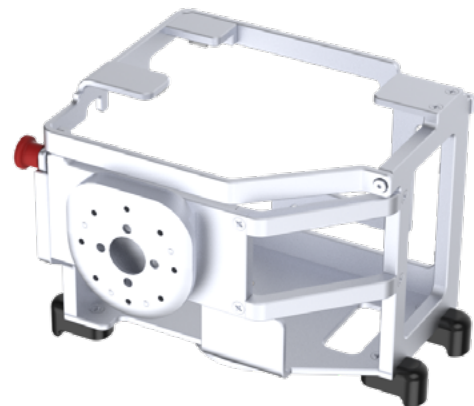


FEATURES

- ✓ Red quick release mechanism for easy installation and removal of the medical device with docking station.
- ✓ Tailored design enables access to all device's connectors and accessories.
- ✓ Anti-rotation micro disc for easy fastening of bracket on Technimount's Wall Mount Pro.
- ✓ Bottom micro disc enables 360° rotation on Technimount's micro base.
- ✓ Integrated acetal feet to protect the bracket and bottom micro disc when placed on the ground or other horizontal surfaces.
- ✓ Made from highly resistant aluminum that withstands to biological fluids and quaternary-type disinfectants.
- ✓ Tested in compliance with SAE J3043, the highest industry safety standard for transport of medical equipment.

BENEFITS

- + Easy device installation and removal from bracket or medical device's docking station.
- + Access to device's monitor, connectors and accessories at all times.
- + Combination of bracket and medical device remains lightweight and flexible for easy continuum of care.
- + Compatible with Technimount's systems with the Micro Base.
- + Highly resistant and long lasting bracket, designed for emergency and critical care environments.
- + Reduces the risk of damage to the equipment and ensures the safety of patients and crews during EMS and Critical Care Transport.



SAFETY AND FLEXIBILITY WHERE IT MATTERS MOST

[technimount.com](https://www.technimount.com)

