



TECHNIMOUNT
EMS™

BRACKET PRO SERIE® 35 - LP

OPERATING GUIDE

**SAFETY AND FLEXIBILITY
WHERE IT MATTERS MOST**



Copyrights

Copyright 2023 Technimount E.M.S. Holding Inc. (Technimount EMS) is an affiliated company of Technologies CGC Inc. All Rights Reserved. No part of this publication may be reproduced, transmitted, transcribed, stored in a retrieval system, translated in any language, modified in any form or by any means, without the written permission of Technimount or its affiliate companies.

Trademarks

Product and medical device manufacturer names are Trademarks™ or Registered Trademarks® of their respective holders. Technimount does not have a commercial relationship with these medical device manufacturers.

- Safety Arm System™ and Technimount EMS™ are trademarks of Technologies CGC Inc.
- Bracket Pro Serie® is a registered trademark of Technologies CGC Inc.
- LIFEPAK® is a registered trademark of Stryker Corporation.

For any issues with your Technimount product, its components, or for any technical questions during the installation, operation, or maintenance, please contact Technical Support at techsupport@technimount.com.

Contact Information

Technimount E.M.S. Holding Inc.

C/O: Regulatory Affairs

3770 Jean Marchand Street, Suite 100-C

Quebec (QC) G2C 1Y6

Canada

customerservice@technimount.com

techsupport@technimount.com

legal@technimount.com

www.technimount.com

T + 1 581.700.6613

TF + 1 888.639.2758 (North America)

Table of Contents

Copyrights	ii
Trademarks	ii
Contact Information	ii
1. Safety Guidelines.....	4
2. Operate the Bracket Pro Serie 35 - LP	5
..... 2.1. Install the Bracket Pro Serie 35 - LP on the Standard Surface Base.....	5
..... 2.2. Remove the Bracket Pro Serie 35 - LP from the Standard Surface Base.....	6
..... 2.3. Install the Top Accessory Bag on the Bracket Pro Serie 35 - LP.....	7
..... 2.4. Remove the Top Accessory Bag from the Bracket Pro Serie 35 - LP	8
3. Perform the Daily Safety Checks	9
..... 3.1. Required Tools.....	9
..... 3.2. Daily Safety Checks	9
..... 3.3. Illustrated Inspections Points	11

1. Safety Guidelines



WARNING - General Warning

- **Do not** perform safety checks on Technimount products, before receiving proper training.
- Perform the safety checks, as prescribed in this operating guide. Failing to follow the recommended guidelines could cause premature damage to the product.



CAUTION - Safe Handling and Operation

- Improper use of the Technimount product may damage the device or cause injury to the patients or EMS personnel.
- If any serious incident occurs with the mounting solution, immediately stop using the product, report the incident to Technical Support at technicalsupport@technimount.com and the applicable regulatory agency.



CAUTION - Safe Practice

- Always pay close attention to the condition of the safety mechanisms, to prevent undue risk to the device, patients and EMS personnel. Follow the recommended guidelines prescribed in this document.
- Always ensure that the medical device is secured in the bracket.
- Keep this document with the product at all times.



CAUTION - Working Load/Load Balance

The Safe Working Load (SWL) is 26 lbs (11.8 kg). Do not overload the system. The Bracket Pro Serie® 35 - LP, medical device, accessory bags and monitor/defibrillator accessories can weigh up to 30 lbs (13.6 kg). Follow the OSHA (The Occupational Safety and Health Administration) proper lifting techniques to prevent injuries.



CAUTION - Follow Instructions for Use

- Always read and abide by all the safety guidelines identified, as well as follow the instructions provided within this document.
- Refer to the medical device's user manual for safety precautions and user instructions for the safe use of the LIFEPAK® 15 monitor/defibrillator, accessory bags and monitor/defibrillator accessories.

2. Operate the Bracket Pro Serie 35 - LP

This Operating Guide is used to help EMS personnel effectively secure the LIFEPAK 15® monitor/defibrillator in the Bracket Pro Serie® 35 - LP during critical care transport. For detailed product information that is not user related, refer to your supervisor or the user manual when required.

NOTE: Always perform the Safety checks BEFORE using the Bracket Pro Serie 35 - LP.

NOTE: Only a Technimount bracket with a standard bottom disc can be installed on the Standard Surface Base.

NOTE: Technimount continually seeks advancements in product design and quality. While this operating guide contains the most updated product information available at the time of printing, it may contain minor differences with the current version. For more information, please contact Customer Service at customerservice@technimount.com.

2.1. Install the Bracket Pro Serie 35 - LP on the Standard Surface Base

1. With one hand, grab the LIFEPAK 15 handle and with the other the Bracket Pro Serie 35 - LP handle (Figure 1 A).
2. Slide the standard bottom disc of the bracket horizontally into the Standard Surface Base to lock it.
3. Push the medical device all the way back in the base until you hear the click of the red quick release mechanism.
4. Move the medical device back and forth to ensure that the bracket is locked securely in the Standard Surface Base.
5. Turn the medical device clockwise or counterclockwise, to the desired position (Figure 1 B).

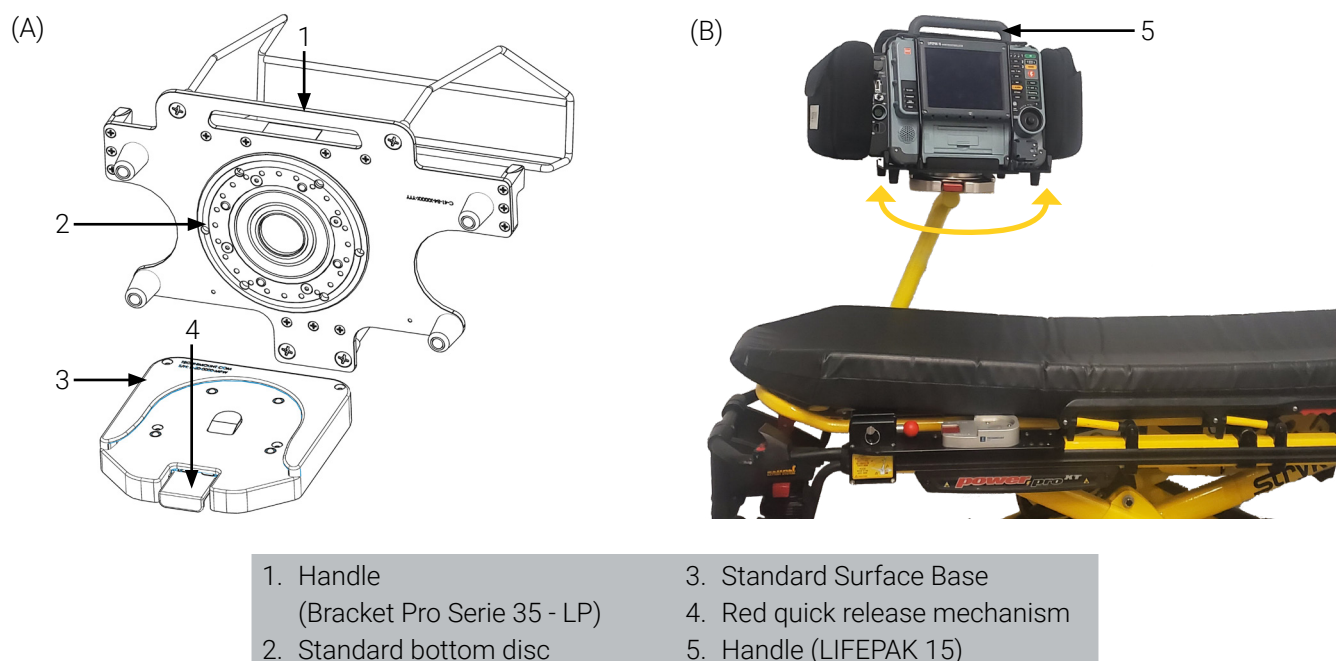


Figure 1: Installation of the Bracket Pro Serie 35 - LP on the Standard Surface Base

2.2. Remove the Bracket Pro Serie 35 - LP from the Standard Surface Base

1. Rotate the medical device to align the feet of the bracket parallel to sides of the Standard Surface Base (Figure 2).
2. With one hand, grab the LIFEPAK 15 handle and with the other the Bracket Pro Serie 35 - LP handle (Figure 2)
3. Press and hold the red quick release mechanism located at the front of the Standard Surface Base, then slide the medical device horizontally out of the base (Figure 2).
4. Set aside the medical device.



Figure 2: Removal of the Bracket Pro Serie 35 - LP from the Standard Surface Base

2.3. Install the Top Accessory Bag on the Bracket Pro Serie 35 - LP

1. Remove the paddles, if required. Refer to the medical device manufacturer documentation for proper use and operation.
2. Align the anchor of the top accessory bag with the T-slot located on top of the Bracket Pro Serie 35 - LP (Figure 3 A), then slide the bag up the T-slot (Figure 3 B) until you hear the click sound of the attachment.
3. Move the accessory bag back and forth to ensure that the bag is locked securely in the bracket.

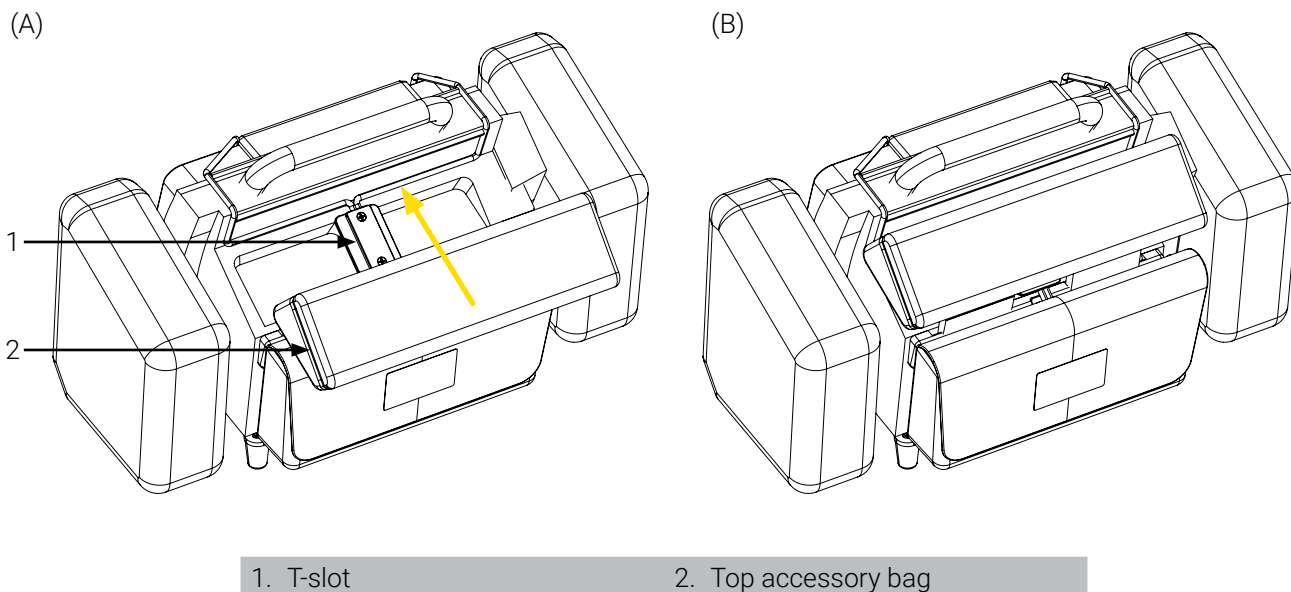


Figure 3: Installation of the top accessory bag

2.4. Remove the Top Accessory Bag from the Bracket Pro Serie 35 - LP

1. Grab the top accessory bag with both hands, then slide the bag downwards on the t-slot of the Bracket Pro Serie 35 - LP (Figure 4).
2. Set aside the top accessory bag.

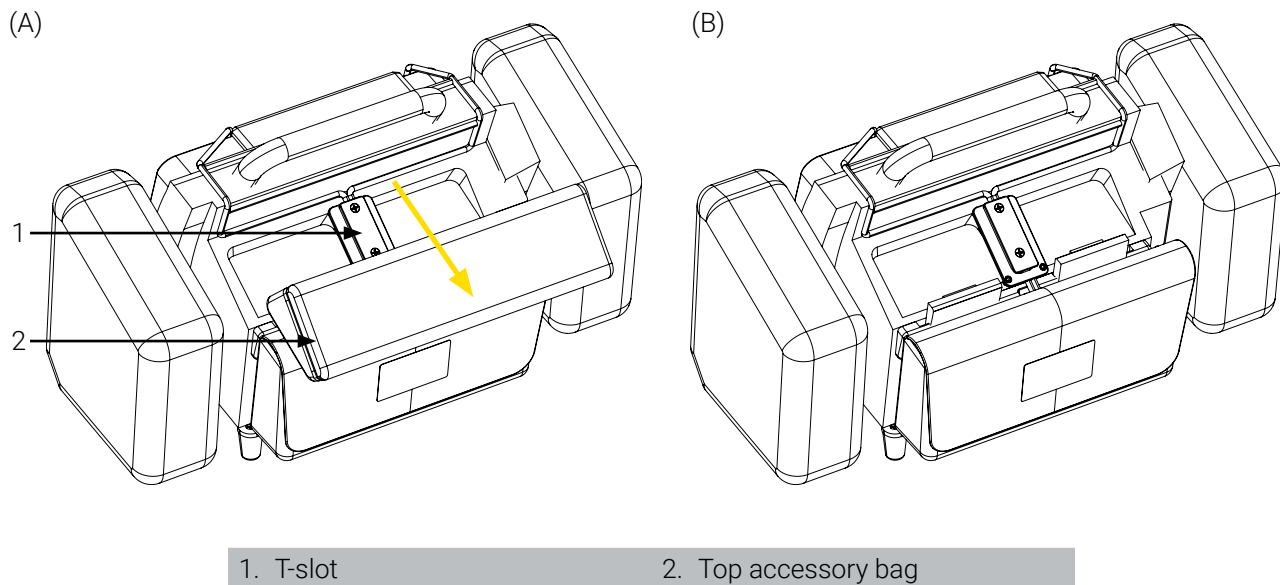


Figure 4: Removal of the top accessory bag

3. Perform the Daily Safety Checks

Daily safety checks on Technimount products are recommended to keep them in good condition and avoid failure or injury to the patient or EMS personnel. EMS personnel should perform the daily safety checks at the beginning of each work shift.

NOTE: Always keep records of your all maintenance activities and immediately remove defective or expired products from your inventory.

Please contact Technical Support at techsupport@technimount.com for replacement parts or repair related issues.

3.1. Required Tools

- Clean dry cloth

3.2. Daily Safety Checks

Refer to the illustrated inspection points (Figure 5), if needed.

NOTE: In case of a non-conformity, alert the maintenance supervisor of all non-compliances and immediately cease use.

DAILY SAFETY CHECKS		COMPLIANT	
INSPECTIONS		YES	NO
Bracket Pro Serie 35 - LP (Figure 5)			
- Visually inspect all the components of the bracket to ensure there is no damage or chemical attack, that the hardware is in good condition and there are no loose screws.		<input type="checkbox"/>	<input type="checkbox"/>
- Visually inspect the bracket and make sure there are no lodged particles. If so, immediately remove using a clean dry cloth.		<input type="checkbox"/>	<input type="checkbox"/>
Retaining Frame (Figure 5)			
- Visually inspect all the components of the retaining frame to ensure there is no damage or chemical attack and that the hardware is in good condition.		<input type="checkbox"/>	<input type="checkbox"/>
Standard Bottom Disc (Figure 5)			
- Visually inspect all the components of the standard bottom disc to ensure there is no damage or chemical attack and that the hardware is in good condition.		<input type="checkbox"/>	<input type="checkbox"/>
- Visually inspect the rim of the standard bottom disc and make sure there are no lodged particles. If so, immediately remove using a clean dry cloth.		<input type="checkbox"/>	<input type="checkbox"/>
- Insert/remove the standard bottom disc on the base a few times to ensure proper functioning. The Bracket Pro Serie 35 - LP should be easily inserted and locked in position after the click sound and easily removed when using the quick release mechanism.		<input type="checkbox"/>	<input type="checkbox"/>
Acetal Feet (Figure 5)			
- Visually inspect the (4) feet to ensure there is no damage or chemical attack, loose parts and that the hardware is in good condition.		<input type="checkbox"/>	<input type="checkbox"/>

[illegible]

3.3. Illustrated Inspections Points

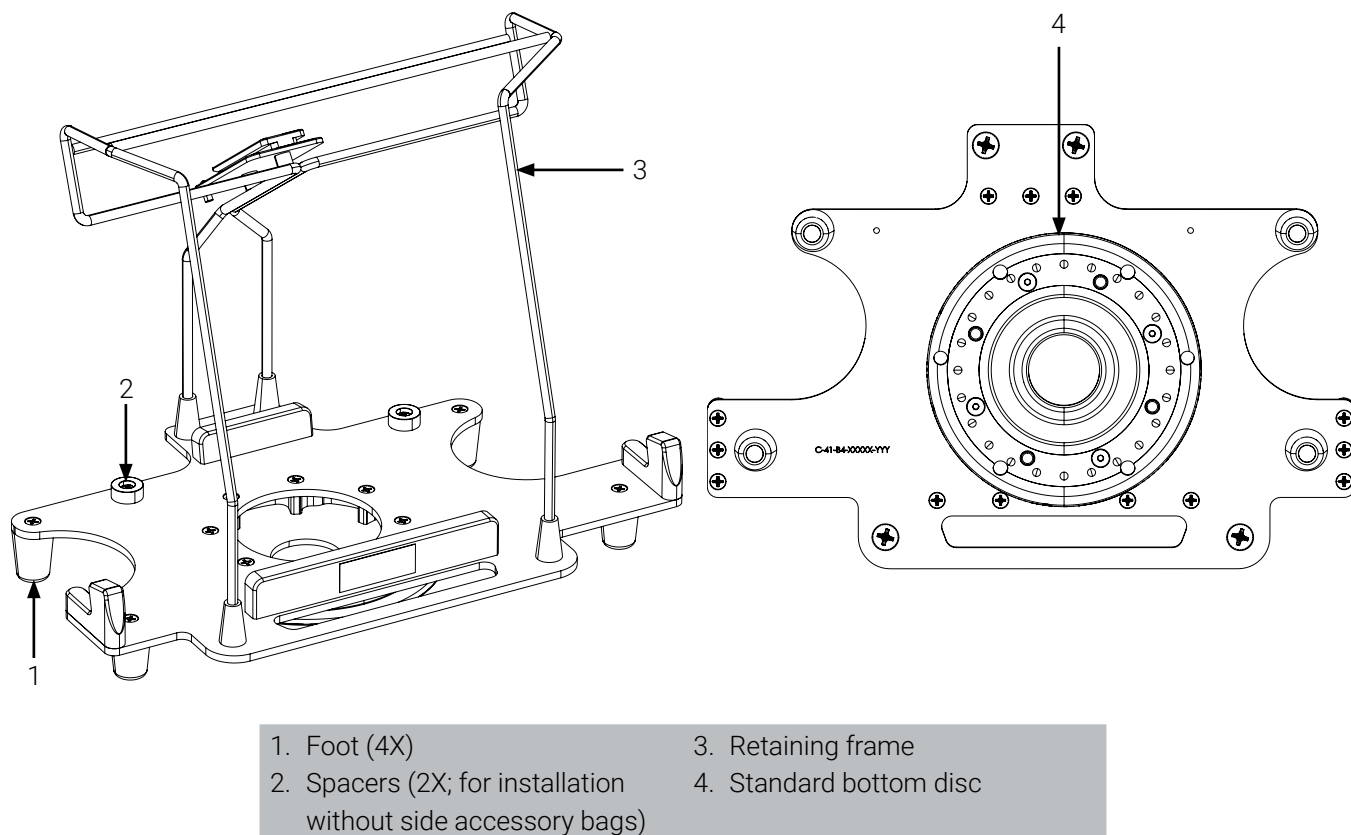


Figure 5: Bracket Pro Serie 35 - LP - Inspection points (front and bottom of bracket shown)



TECHNIMOUNT

EMS™

Technimount EMS offers mounting solutions that can be installed on ambulance counters, walls and stretchers which allows for the device to follow the patient throughout the continuum of care. Our unparalleled level of flexibility allows for maximum operability in EMS, hospital and military environments.

Technimount EMS is driven to offer innovative solutions that respond to the unique device management needs of emergency and Critical Care Transport (CCT) teams for ground and air ambulances. Safety is at the core of our values, all Technimount systems are tested in compliance with the highest industry standards for impact resistance. Technimount EMS is committed to developing innovative solutions as healthcare practices evolve.

TECHNIMOUNT E.M.S. HOLDING INC.

3770 Jean Marchand Street, Suite 100-C
Quebec (QC) G2C 1Y6
Canada
T + 1 581.700.6613
TF + 1 888.639.2758

technimount.com

