



**TECHNIMOUNT**  
EMS™



## **BRACKET PRO SERIE® 280**

MOUNTING SYSTEM FOR THE VENTEC LIFE  
SYSTEMS® VOCUS™ VENTILATOR

### **SAFETY AND FLEXIBILITY WHERE IT MATTERS MOST**

The Bracket Pro Serie 280 is designed to secure the VOCUS device from Ventec Life Systems during critical care transport.

The Bracket Pro Serie 280 provides access to the medical device from all angles. It enables multiple mounting configurations used in EMS environments. Tested in compliance with SAE J3043, the highest industry safety standards for the transport of medical devices.

At Technimount EMS, we understand that EMS and Critical Care Transport teams need solutions that they can rely on. We design and develop quality mounting systems which are safe and flexible, allowing you to concentrate on what matters most - patient care.

# BRACKET PRO SERIE® 280

## POTENTIAL CONFIGURATIONS

Safety MD-  
Transporter™



Safety Arm  
System™



Wall Mount Pro



Standard Surface Base

Note: Product may vary from images shown

# TECHNICAL SPECIFICATIONS

<b>Product Name</b>	Bracket Pro Serie® 280
<b>Description</b>	Mounting solution designed to secure the Ventec VOCSN Multi-Function ventilator during critical care transport
<b>Part Number</b>	2800-10-VOCSN
<b>Features</b>	<ul style="list-style-type: none"><li>- Multiple mounting configurations on surfaces, stretchers, and carts</li><li>- Quick release knobs for easy installation and removal of the VOCSN ventilator</li><li>- Robust bracket for EMS / CCT transport</li><li>- Ground compatibility</li></ul>
<b>Operating Environment</b>	<ul style="list-style-type: none"><li>- EMS / CCT</li><li>- Hospital / Clinic, Military</li></ul>
<b>Compliance</b>	Tested in compliance with SAE J3043 and AMD 028
<b>Compatible Mounting System</b>	Technimount Bracket Pro Serie® mounting systems with an anti-rotation micro disc and standard bottom disc
<b>Dimensions (W x D x H)</b>	12.7 in. x 9.3 in. x 11.05 in. (32.26 cm x 23.62 cm x 28.07 cm)
<b>Weight</b>	6.4 lbs (2.9 kg)
<b>Composition</b>	<ul style="list-style-type: none"><li>- Bracket Pro Serie® 280: Aluminum 5052-H32 and 6061-T6, silver anodized finish</li><li>- Feet, bumpers: Acetal</li></ul>
<b>Safe Working Load (SWL)</b>	18 lbs (8.2 kg)
<b>Operating Temperature</b>	- 31° F to 113° F (- 35° C to 45° C)
<b>Installation</b>	<ul style="list-style-type: none"><li>- Multi-functional ventilator retained in mounting system by locking pull-down bar</li><li>- Quick release knobs are used to easily release and remove the ventilator from the mounting system</li></ul>
<b>Model &amp; Configuration Options</b>	Contact Customer Service at <a href="mailto:customerservice@technimount.com">customerservice@technimount.com</a> .

# YOUR SAFETY IS OUR PRIORITY

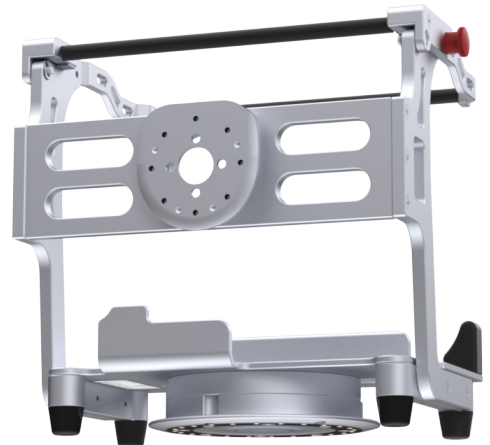


## FEATURES

- ✓ Standard bottom disc and anti-rotation micro disc to support multiple mounting configurations on surfaces, stretchers, and carts.
- ✓ Bracket respects the integrity and functionality of the medical device.
- ✓ Red quick release knobs for easy installation and removal of the VOCSN ventilator.
- ✓ Durable feet to install the bracket on any flat surface.
- ✓ Tested in compliance with SAE J3043, the highest safety standards for transport of medical equipment.

## BENEFITS

- + Access to the medical device from all angles (360° rotation).
- + No interference with device connectors and wires; access to the ventilator at all times.
- + Improves safety by allowing the quick removal of the medical device in an emergency.
- + Provides added stability to prevent damage to the medical device.
- + Improves the safety of patients and personnel during EMS and critical care transport.



## SAFETY AND FLEXIBILITY WHERE IT MATTERS MOST

[technimount.com](https://www.technimount.com)