



TECHNIMOUNT
EMS®

BRACKET PRO SERIE® 350

MOUNTING SYSTEM FOR THE LIFEPAK® 35 MONITOR/
DEFIBRILLATOR



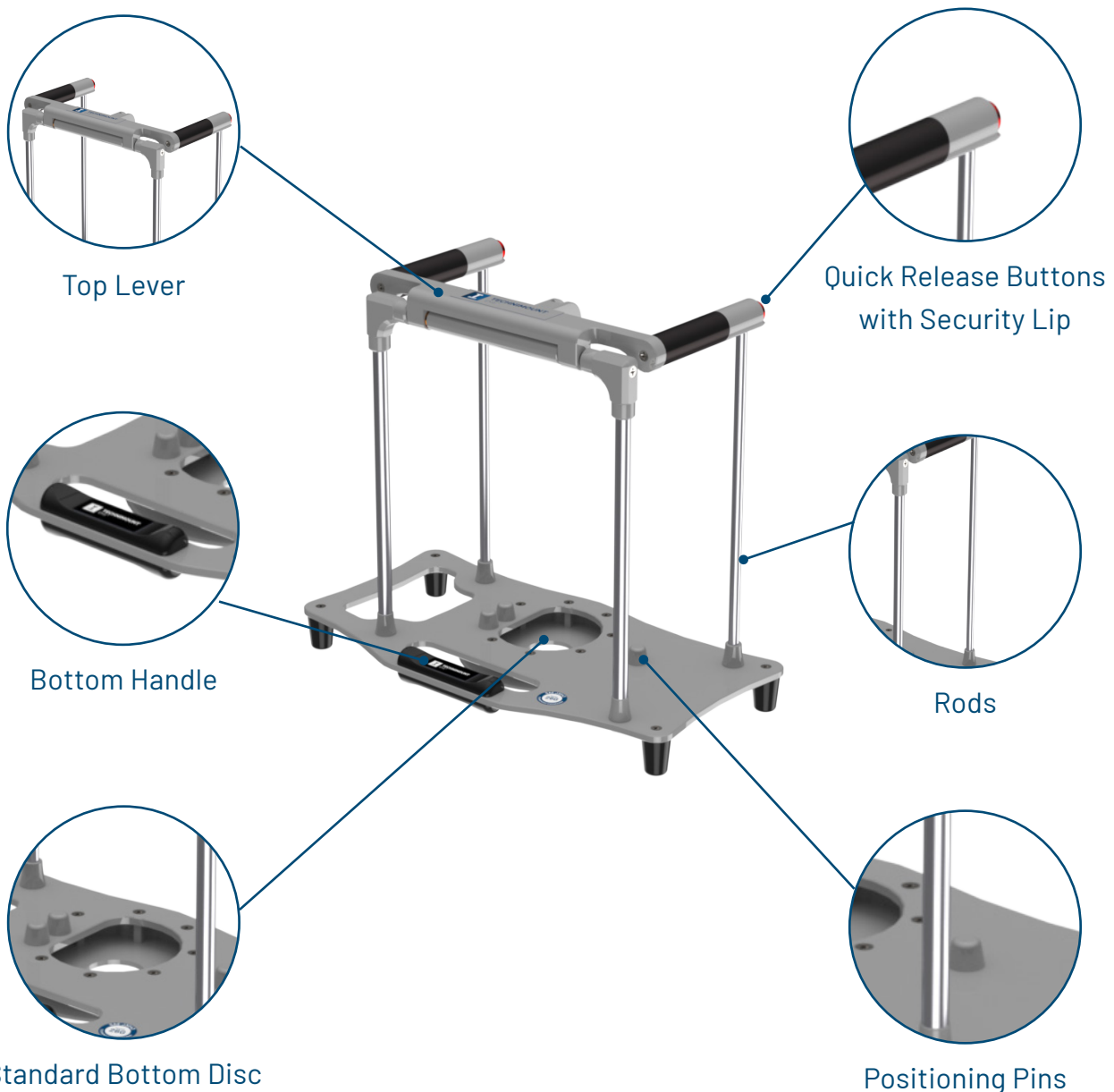
SAFETY AND FLEXIBILITY
WHERE IT MATTERS MOST

BRACKET PRO SERIE® 350

Product Components

The Bracket Pro Serie® 350 is designed to secure the LifePak® 35 monitor/defibrillator during EMS and Critical Care ground transport. Featuring a standard bottom disc that is compatible with Technimount's Standard Surface Base, this mounting system ensures a seamless integration towards the new medical device without altering existing protocols.

Considering the footprint of the medical device, this mounting solution was designed to be heavy duty and robust for demanding EMS conditions. Moreover, the Bracket Pro Serie 350 is tested in compliance with the highest safety standards for securing medical devices during transport, SAE J3043.



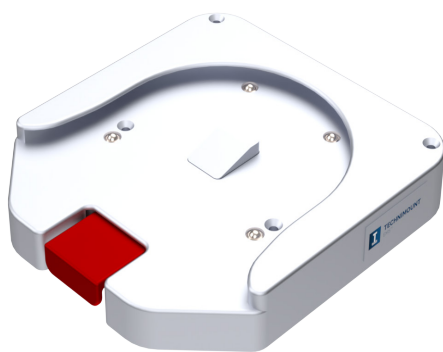
BRACKET PRO SERIE® 350

Highlights

FEATURES & BENEFITS

- Standard bottom disc for installation on Technimount's Standard Surface Base, allowing multiple mounting configurations.
- Tested in compliance with SAE J3043, the highest industry safety standards for transport of medical devices.
- Full access to the medical device and it's connectors from all angles (360°)
- Lever equipped with quick release buttons to easily install or remove device from bracket for specific EMS protocols.
- Stainless steel rods to secure medical device with or without it's original Stryker bags.
- Handle that provides the second grip needed to easily rotate or lift the device and it's bracket from the Standard Surface Base.
- Positioning buttons for added retention, keeping the device securely positioned within the bracket.
- Integrated feet to provide stability and prevent damage to the medical device when bracket is set on a surface.
- Protective lip covering the quick release buttons to prevent accidental activation. Additionally, both buttons must be dually pushed to release the lever.
- Non-slip, flame retardant rubber covering the lever to minimize vibration during transport.

POSSIBLE CONFIGURATIONS



Standard Surface Base



Safety Arm System

BRACKET PRO SERIE® 350

Product Overview

Product Name	Bracket Pro Serie® 350
Description	Support bracket designed to aid trained EMS and clinical personnel move the LIFEPAK® 35 monitor/defibrillator during emergency medical services and critical care
Product Code	230-10-LP35
Operating Environment	EMS/CCT (ground)
Compliance	Tested in compliance with SAE J3043 & AMD-028
Expected Service Life	5 years
Compatible Stretcher	N/A
Compatible Mounting System	<ul style="list-style-type: none">Standard Surface BaseExtended Surface BaseUniversal Mounting Base
Compatible Medical Devices/ Accessories	LIFEPAK® 35 monitor/defibrillator
Dimensions (L X P X H)	16.3 in. X 9 in. X 14 in. (41.4 cm X 22.9 cm X 35.6 cm), w/o medical devices or accessories
Weight	7.7 lb (3.5 kg), w/o medical devices or accessories
Composition	<ul style="list-style-type: none">Bracket Pro Serie® 350: aluminum, stainless steel, plastic, rubberStandard bottom disc: Refer to the user documentation
Total Safe Working Load (SWL)	25 lb (11.34 kg)
Operating Temperature	- 31° F to 113° F (- 35° C to 45° C)
Cleaning Solutions	<ul style="list-style-type: none">Oxivir®, 5% Hydrogen Peroxide with Peracetic Acid (AHP)Lavo® 12, 10 000 ppm Sodium HypochloriteTNT-100, 5% Quaternary Ammonium CompoundSpectro-Sept, 5% Ethyl AlcoholSpectrol, 5% EDTA salt
Options	N/A



technimount.com

Bracket Pro Serie, Technimount EMS are Registered Trademarks of Technologies CGC Inc.

© 2025 Technimount EMS Holding Inc. - All Rights Reserved - Printed in Canada
Product information may vary

BR-BP350-202502EN-01