



TECHNIMOUNT
EMS®

BRACKET PRO SERIE® 22

MOUNTING SYSTEM FOR THE SAFE TRANSPORT
OF THE ZOLL M2® MONITOR/DEFIBRILLATOR



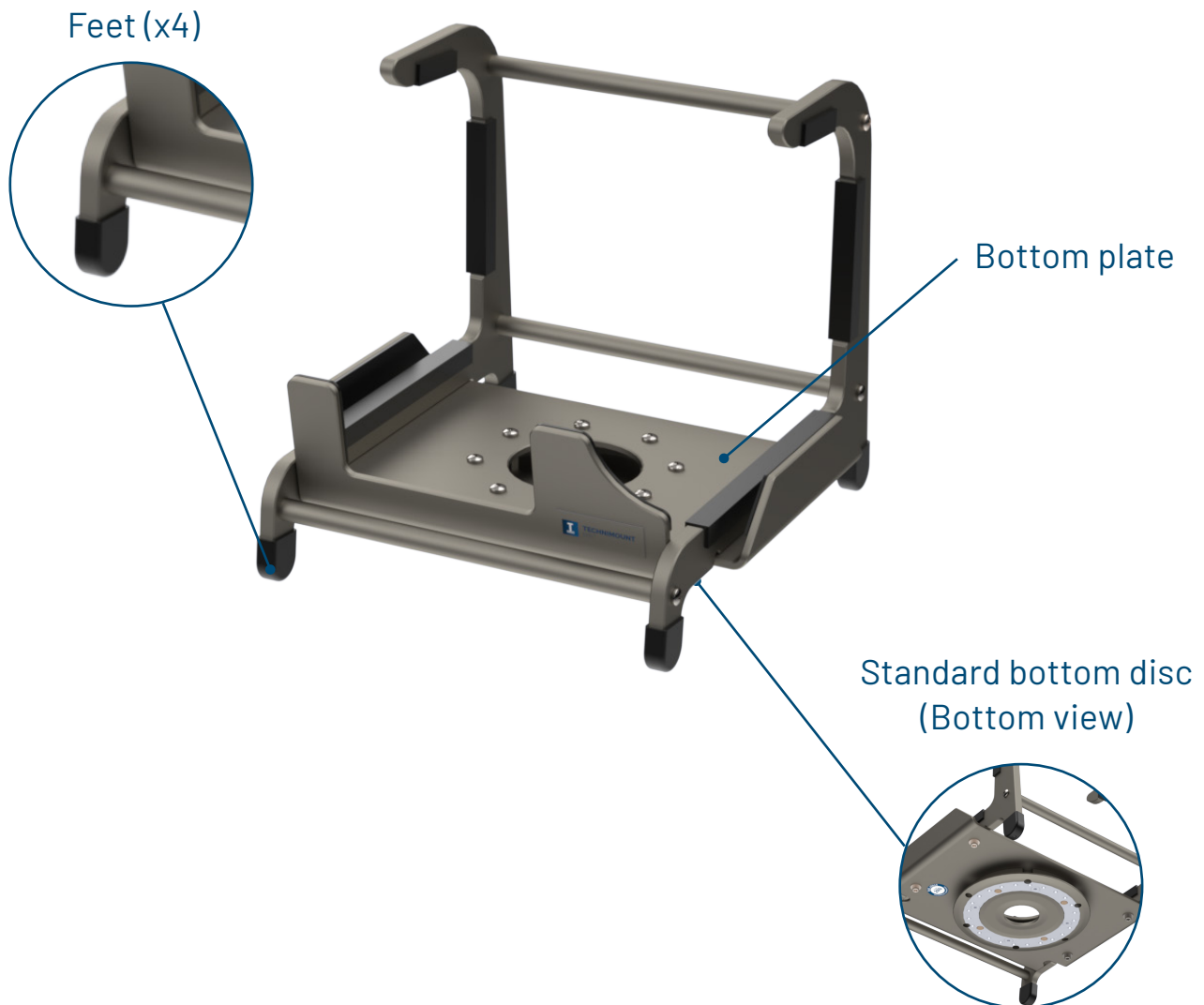
SAFETY AND FLEXIBILITY
WHERE IT MATTERS MOST

BRACKET PRO SERIE® 22

Product Components

The Bracket Pro Serie 22 is a mounting solution engineered for the secure transport of the ZOLL M2 during emergency medical response. Tested in compliance to meet SAE J3043 standards, it safeguards both patients and crews while helping prevent costly damage to your medical equipment.

Featuring a standard bottom disc, the Bracket Pro Serie 22 integrates seamlessly with Technimount's Standard Surface Base or Universal Mounting Base, offering versatile installation on ambulance counters or directly on stretchers during patient transport. Ensuring device management and allowing for a quick installation or removal of the medical device with its bracket, ideal for rapid deployment in urgent situations.



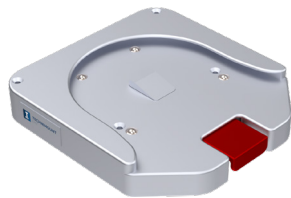
BRACKET PRO SERIE® 22

Highlights

FEATURES & BENEFITS

- Design to secure the Zoll M2 with its accessory bags
- Tested in compliance with SAE J3043, the highest standard of the industry for the ground transport of medical devices
- Compatible with Technimount's surface bases enabling a 360° rotation and rapid release during critical situations
- Equipped with durable stabilizing feet for secure placement on any flat surface
- Allows full access to monitor components, ensuring safe and efficient patient care throughout transport
- Featuring integrated cushioning, reducing harmful vibrations to medical device during transport
- Easy installation ensuring structural integrity of the device with minimal tools required
- Ensures patient and crew safety while minimizing damage to the medical device, avoiding injury and costly repairs

POSSIBLE CONFIGURATIONS



Standard Surface Base



Extended Surface Base

COMPATIBLE STRETCHER SYSTEMS



Xtension Pro Assistant



Safety Arm System

BRACKET PRO SERIE® 22

Technical Specifications

Product Name	Bracket Pro Serie® 22
Description	Support bracket designed to aid trained EMS and clinical personnel hold and secure the ZOLL® M2® monitor/defibrillator with accessory bags
Product Code	150-10-M2Z
Operating Environment	<ul style="list-style-type: none">- EMS/CCT (ground)- Hospital/Clinic
Compliance	Tested in compliance with SAE J3043 and AMD-028
Compatible Stretcher	N/A
Compatible Mounting System	<ul style="list-style-type: none">- Standard Surface Base- Extended Surface Base- Universal Mounting Base
Compatible Medical Device	ZOLL® M2® monitor/defibrillator with accessory bags
Dimensions (W X D X H)	11.07 in. X 11.48 in. X 10.47 in. (28.12 cm X 29.16 cm X 26.60 cm)
Weight	5.41 lb (2.46 kg)
Composition	Aluminum, rubber
Total Safe Working Load (SWL)	22 lb (9.97 kg)
Operating Temperature	- 31° F to 113° F (- 35° C to 45° C)
Options	N/A